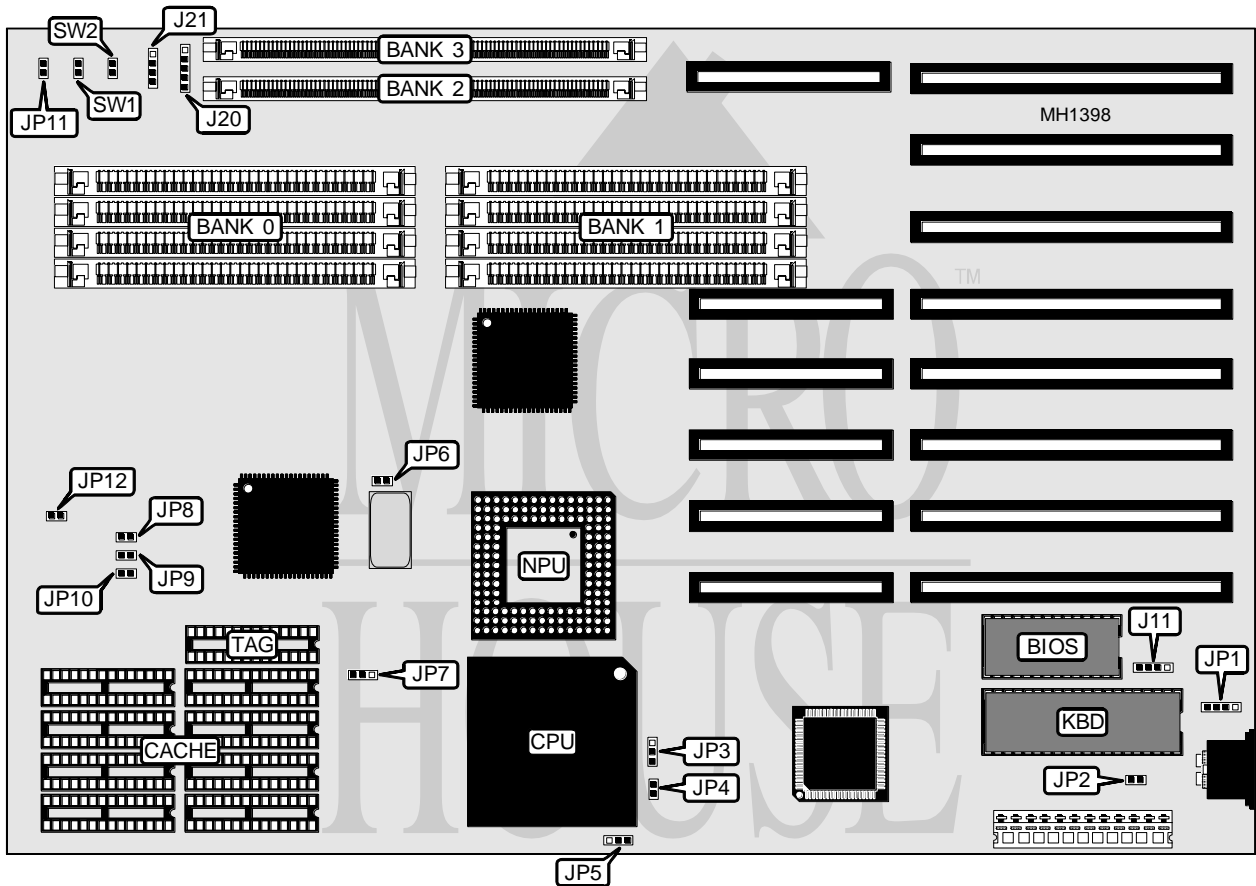


NOVACOR, INC.

OPTIMUM 486WB-25/33/40/50

Processor	80486SX/80487SX/80486DX
Processor Speed	25/33/40/50MHz
Chip Set	OPTI
Max. Onboard DRAM	64MB
Cache	64/256KB
BIOS	AMI
Dimensions	330mm x 218mm
I/O Options	None
NPU Options	4167



CONNECTIONS			
Purpose	Location	Purpose	Location
External battery	J11	Turbo LED	JP11
Power LED & keylock	J20	Reset switch	SW1
Speaker	J21	Turbo switch	SW2

Continued on next page . . .

NOVACOR, INC.
OPTIMUM 486WB-25/33/40/50

... continued from previous page

USER CONFIGURABLE SETTINGS		
Function	Jumper	Position
í CMOS memory normal operation	JP1	pins 2 & 3 closed
CMOS memory clear	JP1	pins 1 & 2 closed
í Monitor type select color	JP2	Open
Monitor type select monochrome	JP2	Closed
í ATCLK select iOSC/6	JP6	Closed
ATCLK select iOSC/4	JP6	Open
CPU speed select 25/33MHz	JP7	pins 2 & 3 closed
CPU speed select 40/50MHz	JP7	pins 1 & 2 closed

DRAM CONFIGURATION				
Size	Bank 0	Bank 1	Bank 2	Bank 3
1MB	(4) 256K x 9	NONE	NONE	NONE
2MB	(4) 256K x 9	(4) 256K x 9	NONE	NONE
4MB	(4) 1M x 9	NONE	NONE	NONE
5MB	(4) 256K x 9	(4) 1M x 9	NONE	NONE
6MB	(4) 256K x 9	(4) 256K x 9	(1) 1M x 36	NONE
8MB	(4) 1M x 9	(4) 1M x 9	NONE	NONE
9MB	(4) 256K x 9	(4) 1M x 9	(1) 1M x 36	NONE
10MB	(4) 256K x 9	(4) 256K x 9	(1) 1M x 36	(1) 1M x 36
12MB	(4) 1M x 9	(4) 1M x 9	(1) 1M x 36	NONE
13MB	(4) 256K x 9	(4) 1M x 9	(1) 1M x 36	(1) 1M x 36
16MB	(4) 1M x 9	(4) 1M x 9	(1) 1M x 36	(1) 1M x 36
16MB	(4) 4M x 9	NONE	NONE	NONE
20MB	(4) 1M x 9	(4) 4M x 9	NONE	NONE
24MB	(4) 1M x 9	(4) 1M x 9	(1) 4M x 36	NONE
24MB	(4) 1M x 9	(4) 4M x 9	(1) 1M x 36	NONE
28MB	(4) 4M x 9	(4) 1M x 9	(1) 1M x 36	(1) 1M x 36
28MB	(4) 1M x 9	(4) 1M x 9	(1) 4M x 36	(1) 1M x 36
32MB	(4) 4M x 9	(4) 4M x 9	NONE	NONE
36MB	(4) 4M x 9	(4) 4M x 9	(1) 1M x 36	NONE
36MB	(4) 4M x 9	(4) 1M x 9	(1) 4M x 36	NONE
40MB	(4) 1M x 9	(4) 1M x 9	(1) 4M x 36	(1) 4M x 36
40MB	(4) 4M x 9	(4) 4M x 9	(1) 1M x 36	(1) 1M x 36
40MB	(4) 1M x 9	(4) 4M x 9	(1) 4M x 36	(1) 1M x 36
48MB	(4) 4M x 9	(4) 4M x 9	(1) 4M x 36	NONE
52MB	(4) 4M x 9	(4) 4M x 9	(1) 4M x 36	(1) 1M x 36
52MB	(4) 4M x 9	(4) 4M x 9	(1) 4M x 36	(1) 1M x 36
52MB	(4) 1M x 9	(4) 4M x 9	(1) 4M x 36	(1) 4M x 36
64MB	(4) 4M x 9	(4) 4M x 9	(1) 4M x 36	(1) 4M x 36

Continued on next page ...

NOVACOR, INC.

OPTIMUM 486WB-25/33/40/50

... continued from previous page

CACHE JUMPER CONFIGURATION			
Size	JP3	JP4	JP5
80486DX	pins 2 & 3 closed	closed	pins 1 & 2 closed
80487SX	pins 1 & 2 closed	closed	pins 1 & 2 closed
80486SX	open	open	pins 2 & 3 closed

CACHE JUMPER CONFIGURATION				
Size	JP8	JP9	JP10	JP12
64KB	open	open	open	open
256KB	open	closed	closed	closed

CACHE CONFIGURATION		
Size	Bank 0	TAG
64KB	(8) 8K x 8	(1) 8K x 8
256KB	(8) 32K x 8	(1) 32K x 8