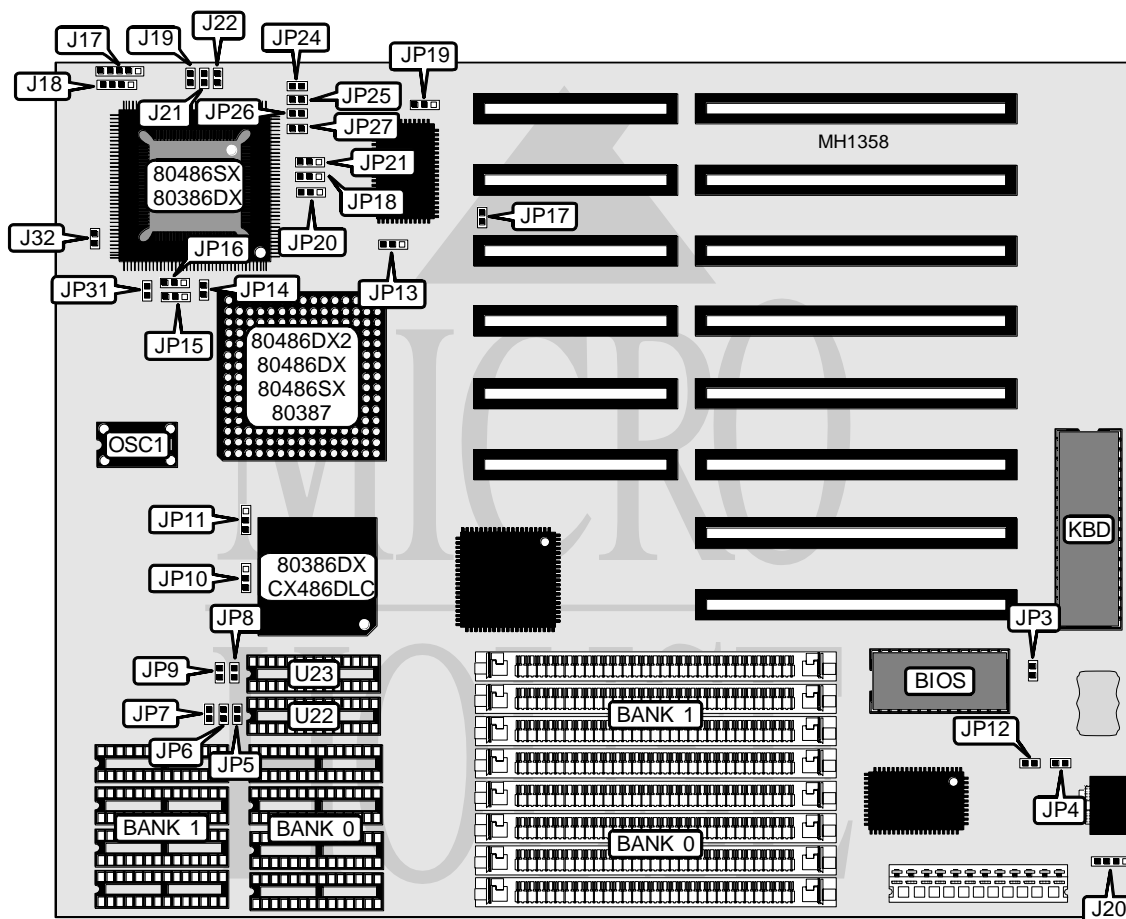


SOYO COMPUTER CO., LTD.

SY-024B1/B2

Processor	80386DX/CX486DLC/80486SX/80486DX/ODP486SX/80486DX2
Processor Speed	25/33/40/50(internal)/50/66(internal)MHz
Chip Set	OPTI
Max. Onboard DRAM	32MB
Cache	64/128/256KB
BIOS	AMI
Dimensions	254mm x 218mm
I/O Options	None
NPU Options	80387



CONNECTIONS

Purpose	Location	Purpose	Location
Power LED & keylock	J17	External battery	J20
Speaker	J18	Turbo switch	J21
Reset switch	J19	Turbo LED	J22

Continued on next page . . .

SOYO COMPUTER CO., LTD.

SY-024B1/B2

... continued from previous page

USER CONFIGURABLE SETTINGS		
Function	Jumper	Position
í Monitor type select monochrome	JP3	Open
Monitor type select color	JP3	Closed

DRAM CONFIGURATION		
Size	Bank 0	Bank 1
1MB	(4) 256K x 9	NONE
2MB	(4) 256K x 9	(4) 256K x 9
4MB	(4) 1M x 9	NONE
5MB	(4) 1M x 9	(4) 256K x 9
8MB	(4) 1M x 9	(4) 1M x 9
16MB	(4) 4M x 9	NONE
20MB	(4) 4M x 9	(4) 1M x 9
32MB	(4) 4M x 9	(4) 4M x 9

CACHE CONFIGURATION				
Size	Bank 0	Bank 1	TAG (U22)	TAG (U23)
64KB	(4) 8K x 8	(4) 8K x 8	(1) 8K x 8	NONE
128KB	(4) 32K x 8	NONE	(1) 8K x 8	NONE
256KB	(4) 32K x 8	(4) 32K x 8	(1) 32K x 8	NONE
256KB	(4) 32K x 8	(4) 32K x 8	(1) 8K x 8	(1) 8K x 8

CACHE JUMPER CONFIGURATION						
Size	JP5	JP6	JP7	JP8	JP9	JP10
64KB	Open	Open	Open	Open	Open	2 & 3
128KB	Closed	Closed	Closed	Open	Open	1 & 2
256KB	Closed	Closed	Closed	Closed	Closed	2 & 3
Note: Pins designated should be in the closed position.						

CPU TYPE CONFIGURATION									
Type	JP4	JP11	JP12	JP13	JP14	JP15	JP16	JP18	JP31
80386DX	Closed	1 & 2	Open	2 & 3	N/A	N/A	N/A	2 & 3	Closed
CX486DLC	Closed	1 & 2	Closed	2 & 3	N/A	N/A	N/A	2 & 3	Closed
80486SX	N/A	2 & 3	N/A	1 & 2	Open	N/A	2 & 3	1 & 2	Open
80486DX	N/A	2 & 3	N/A	1 & 2	Closed	2 & 3	1 & 2	1 & 2	Open
ODP486SX	N/A	2 & 3	N/A	1 & 2	Open	N/A	1 & 2	1 & 2	Open
80486DX2	N/A	2 & 3	N/A	1 & 2	Closed	2 & 3	1 & 2	1 & 2	Open
Note: Pins designated should be in the closed position.									

Continued on next page ...

SOYO COMPUTER CO., LTD.

SY-024B1/B2

... continued from previous page

CPU SPEED CONFIGURATION				
Speed	JP24	JP25	JP26	JP27
25MHz	Closed	Open	Closed	Open
33MHz	Closed	Closed	Open	Open
40MHz	Open	Open	Closed	Closed
50iMHz	Closed	Open	Closed	Open
50MHz	Closed	Open	Closed	Closed
66iMHz	Closed	Closed	Open	Open

CPU CLOCK SOURCE CONFIGURATION		
Type	JP17	JP19
AV9107-03	Open	Closed
Oscillator installed at OSC1	pins 1 & 2 closed	pins 2 & 3 closed