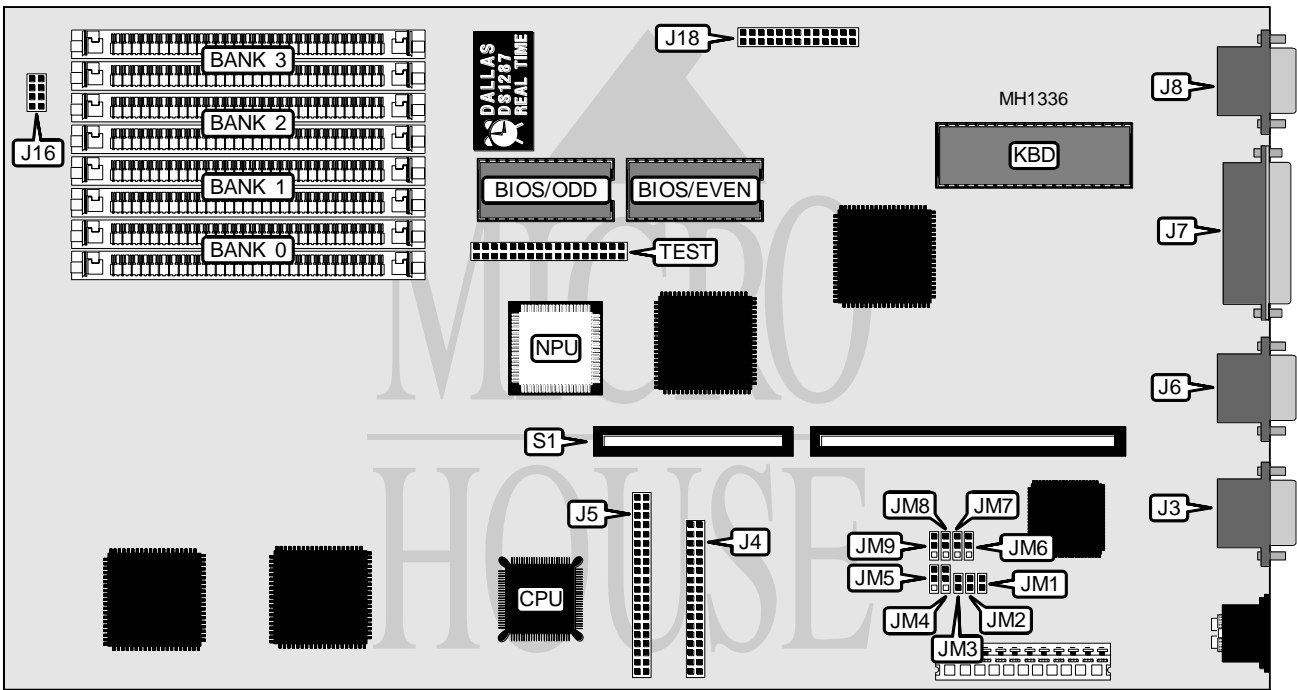


DELL COMPUTER CORPORATION SYSTEM 316SX

Processor	80386SX
Processor Speed	8/16MHz
Chip Set	Faraday
Max. Onboard DRAM	8MB
SRAM Cache	None
BIOS	AMI
Dimensions	342mm x 185mm
I/O Options	16-bit riser card slot, floppy drive interface, IDE interface parallel port, serial port (2), VGA feature connector, VGA port diagnostic test port
NPU Options	80387SX



CONNECTIONS			
Purpose	Location	Purpose	Location
Serial port 1	J3	VGA port	J8
Floppy drive interface	J4	Front panel switches & LEDs	J16
IDE interface	J5	VGA feature connector	J18
Serial port 2	J6	16-bit riser card	S1
Parallel port	J7	Diagnostic test port	TEST

Continued on next page . . .

DELL COMPUTER CORPORATION

SYSTEM 316SX

... continued from previous page

USER CONFIGURABLE SETTINGS		
Function	Jumper	Position
í Factory configured - do not alter	JM1	open
í Factory configured - do not alter	JM2	open
í VGA port interrupt request select none	JM3	open
VGA port interrupt request select IRQ9	JM3	closed
í Monitor type select color	JM4	pins 2 & 3 closed
Monitor type select monochrome	JM4	pins 1 & 2 closed
í On-board VGA port enabled	JM5	pins 2 & 3 closed
On-board VGA port disabled	JM5	pins 1 & 2 closed
í IOCHRDY signal normal	JM6	open
IOCHRDY signal from pin 21 enabled	JM6	pins 1 & 2 closed
IOCHRDY signal from pin 27 enabled	JM6	pins 2 & 3 closed
í IDE interface (J5) enabled	JM7	pins 2 & 3 closed
IDE interface (J5) disabled	JM7	pins 1 & 2 closed
í Tri-state diagnostic signal indicates true drive state at IRQ14	JM8	pins 1 & 2 closed
Tri-state diagnostic signal forced to "passed diagnostic"	JM8	pins 2 & 3 closed
í Floppy drive interface (J4) enabled	JM9	pins 2 & 3 closed
Floppy drive interface (J4) disabled	JM9	pins 1 & 2 closed

DRAM CONFIGURATION				
Size	Bank 0	Bank 1	Bank 2	Bank 3
512KB	(2) 256K x 9	NONE	NONE	NONE
1MB	(2) 256K x 9	(2) 256K x 9	NONE	NONE
1.5MB	(2) 256K x 9	(2) 256K x 9	(2) 256K x 9	NONE
2MB	(2) 1M x 9	NONE	NONE	NONE
2.5MB	(2) 1M x 9	(2) 256K x 9	NONE	NONE
3MB	(2) 1M x 9	(2) 256K x 9	(2) 256K x 9	NONE
4MB	(2) 1M x 9	(2) 1M x 9	NONE	NONE
4.5MB	(2) 1M x 9	(2) 1M x 9	(2) 256K x 9	NONE
5MB	(2) 1M x 9	(2) 1M x 9	(2) 256K x 9	(2) 256K x 9
6MB	(2) 1M x 9	(2) 1M x 9	(2) 1M x 9	NONE
8MB	(2) 1M x 9	(2) 1M x 9	(2) 1M x 9	(2) 1M x 9