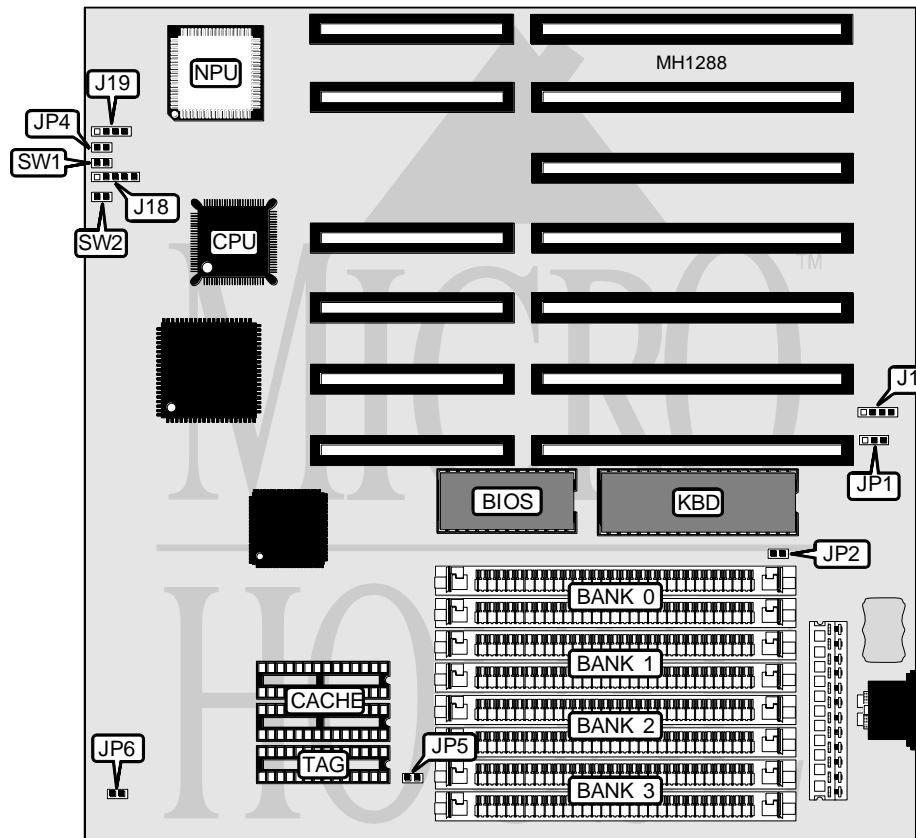


UNIDENTIFIED

KMC - OPTI291

Processor 80386SX/CX486SLC
Processor Speed 16/20/25/33/40MHz
Chip Set OPTI
Max. Onboard DRAM 16MB
SRAM Cache 16/64KB
BIOS AMI
Dimensions 220mm x 220mm
I/O Options None
NPU Options 80387SX/CX83S87



CONNECTIONS			
Purpose	Location	Purpose	Location
External battery	J1	Turbo LED	JP4
Power LED & keylock	J18	Reset switch	SW1
Speaker	J19	Turbo switch	SW2

Continued on next page . . .

UNIDENTIFIED

KMC - OPTI291

... continued from previous page

USER CONFIGURABLE SETTINGS

Function	Jumper	Position
í CMOS memory normal operation	JP1	pins 2 & 3 closed
CMOS memory clear	JP1	pins 1 & 2 closed
í Monitor type select color	JP2	closed
Monitor type select monochrome	JP2	open

DRAM CONFIGURATION

Size	Bank 0	Bank 1	Bank 2	Bank 3
1MB	(2) 256K x 9	(2) 256K x 9	NONE	NONE
2MB	(2) 256K x 9	(2) 256K x 9	(2) 256K x 9	(2) 256K x 9
2MB	(2) 1M x 9	NONE	NONE	NONE
3MB	(2) 256K x 9	(2) 256K x 9	(2) 1M x 9	NONE
4MB	(2) 1M x 9	(2) 1M x 9	NONE	NONE
5MB	(2) 256K x 9	(2) 256K x 9	(2) 1M x 9	(2) 1M x 9
6MB	(2) 1M x 9	(2) 1M x 9	(2) 1M x 9	NONE
8MB	(2) 1M x 9	(2) 1M x 9	(2) 1M x 9	(2) 1M x 9
8MB	(2) 4M x 9	NONE	NONE	NONE
9MB	(2) 256K x 9	(2) 256K x 9	(2) 4M x 9	NONE
10MB	(2) 1M x 9	(2) 4M x 9	NONE	NONE
12MB	(2) 1M x 9	(2) 1M x 9	(2) 4M x 9	NONE
16MB	(2) 4M x 9	(2) 4M x 9	NONE	NONE

SRAM CONFIGURATION

Size	Cache SRAM	TAG
16KB	(2) 8K x 8	(1) 8K x 8
64KB	(2) 32K x 8	(1) 8K x 8

SRAM JUMPER CONFIGURATION

Size	JP5	JP6
16KB	open	open
64KB	closed	closed