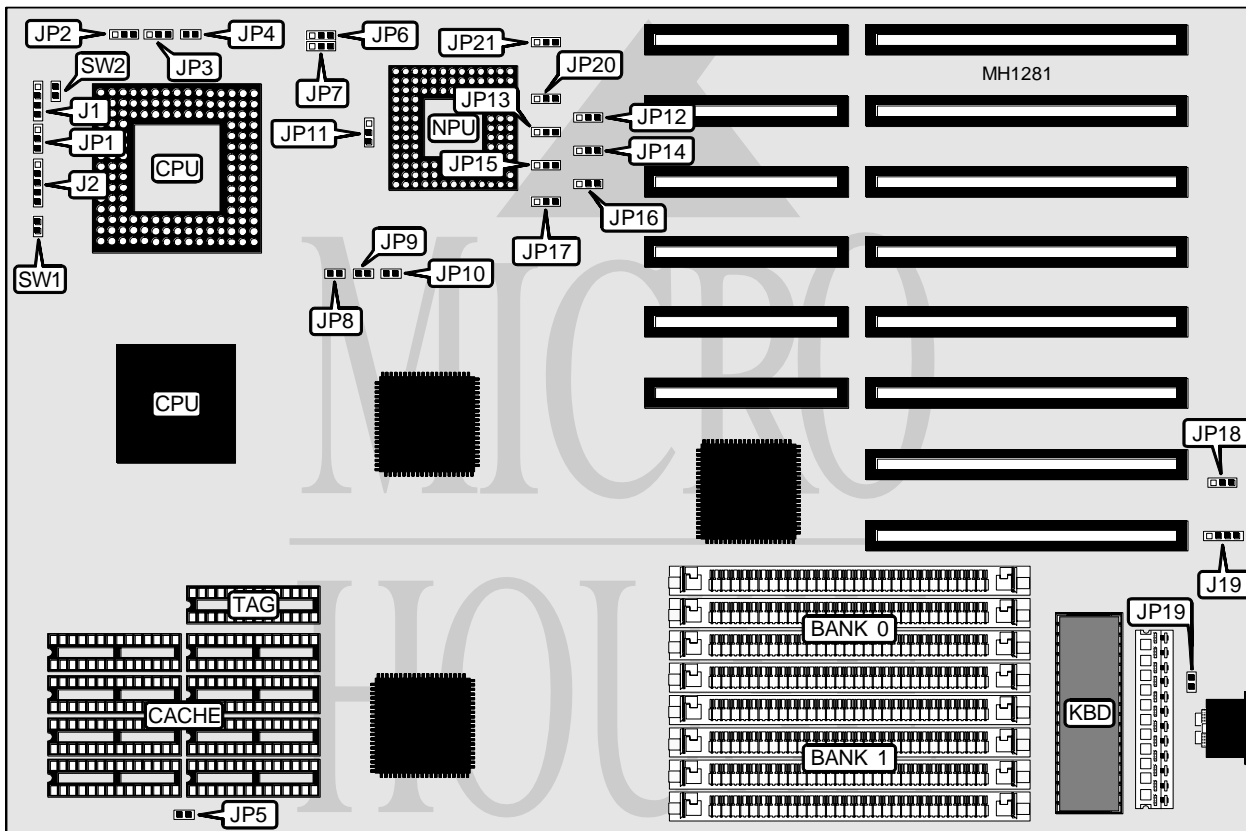


# CAF TECHNOLOGY, INC.

## C 7 2 7

<b>Processor</b>	80386DX/CX486DLC/80486SX/80487SX/80486DX/80486DX2
<b>Processor Speed</b>	20/25/33/40/50(internal)/50/66(internal)MHz
<b>Chip Set</b>	SIS
<b>Max. Onboard DRAM</b>	32MB
<b>SRAM Cache</b>	64/256KB
<b>BIOS</b>	AMI
<b>Dimensions</b>	331mm x 219mm
<b>I/O Options</b>	None
<b>NPU Options</b>	80387/CX387DLC/3167



CONNECTIONS			
Purpose	Location	Purpose	Location
Speaker	J1	Turbo LED	JP1
Keylock	J2	Reset switch	SW1
External battery	J19	Turbo switch	SW2

Continued on next page . . .

# CAF TECHNOLOGY, INC.

## C727

... continued from previous page

USER CONFIGURABLE SETTINGS		
Function	Jumper	Position
í Monitor type select color	JP19	closed
Monitor type select monochrome	JP19	open
í CMOS memory normal operation (internal battery)	JP18	pins 2 & 3 closed
CMOS memory clear	JP18	pins 1 & 2 closed

DRAM CONFIGURATION		
Size	Bank 0	Bank 1
1MB	(4) 256K x 9	NONE
2MB	(4) 256K x 9	(4) 256K x 9
4MB	(4) 1M x 9	NONE
5MB	(4) 1M x 9	(4) 256K x 9
8MB	(4) 1M x 9	(4) 1M x 9
16MB	(4) 4M x 9	NONE
20MB	(4) 4M x 9	(4) 1M x 9
20MB	(4) 1M x 9	(4) 4M x 9
32MB	(4) 4M x 9	(4) 4M x 9

CPU TYPE JUMPER CONFIGURATION				
CPU	JP2	JP3	JP4	JP11
80486DX2 <sup>1</sup>	pins 1 & 2 closed	pins 2 & 3 closed	closed	pins 1 & 2 closed
80486DX (50MHz) <sup>1</sup>	pins 1 & 2 closed	pins 2 & 3 closed	closed	pins 2 & 3 closed
80486DX <sup>1</sup>	pins 1 & 2 closed	pins 2 & 3 closed	closed	pins 1 & 2 closed
80487SX <sup>1</sup>	pins 1 & 2 closed	pins 1 & 2 closed	closed	pins 1 & 2 closed
CX486DLC <sup>1</sup>	pins 2 & 3 closed	open	open	pins 1 & 2 closed
80486SX <sup>1</sup>	pins 2 & 3 closed	open	open	pins 1 & 2 closed
80368DX <sup>2</sup>	N/A	N/A	N/A	pins 1 & 2 closed

Note<sup>1</sup>: Jumpers JP6, JP7, JP12, JP13, JP14, JP15, JP16, JP17, JP20, JP21 pins 2 & 3 closed.  
 Note<sup>2</sup>: Jumpers JP6, JP7, JP12, JP13, JP14, JP15, JP16, JP17, JP20, JP21 pins 1 & 2 closed.

SRAM JUMPER CONFIGURATION				
Size	JP5	JP8	JP9	JP10
64KB	open	open	open	open
256KB	closed	closed	closed	open

SRAM CONFIGURATION		
Size	Cache SRAM	TAG
64KB	(8) 8K x 8	(1) 8K x 8
256KB	(8) 32K x 8	(1) 32K x 8