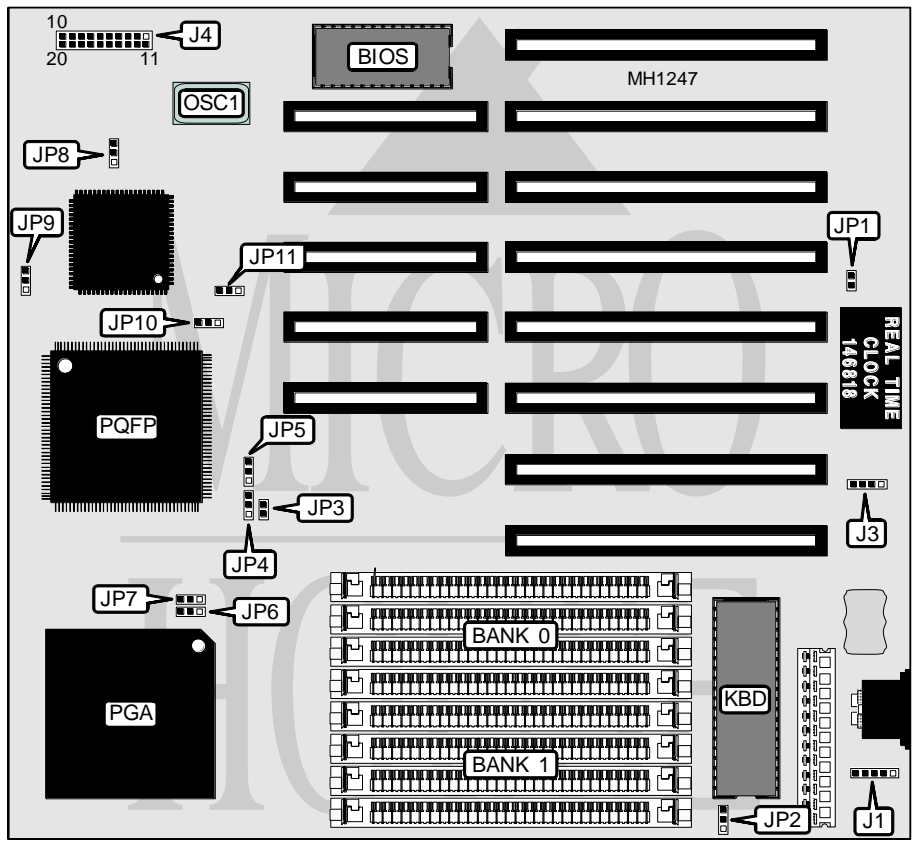


COMPUTREND SYSTEMS, INC.

ALI 486 NONCACHE

Processor	80486SX/80487SX/80486DX/ODP486SX/80486DX2
Processor Speed	16/20/25/33/50(internal)/66(internal)
Chip Set	ALI
Max. Onboard DRAM	32MB
SRAM Cache	None
BIOS	AMI
Dimensions	220mm x 220mm
I/O Options	Auxiliary keyboard connector
NPU Options	None



CONNECTIONS			
Purpose	Location	Purpose	Location
Auxiliary keyboard	J1	Turbo switch	J4/pins 15 - 17
Power LED & keylock	J4/pins 1 - 5	Turbo LED	J4/pins 12 & 13
Speaker	J4/pins 7 - 10	External battery	J3
Reset switch	J4/pins 19 & 20		

Continued on next page . . .

COMPUTREND SYSTEMS, INC.

ALI 486 NONCACHE

... continued from previous page

USER CONFIGURABLE SETTINGS		
Function	Jumper	Position
í CMOS memory normal operation	J3	connected
CMOS memory clear	J3	pins 3 & 4 closed
í Factory configured - do not alter	JP1	open
í Monitor type select monochrome	JP2	pins 1 & 2 closed
Monitor type select color	JP2	pins 2 & 3 closed

CPU JUMPER CONFIGURATION						
CPU	Location	JP3	JP4	JP5	JP6	JP7
80486DX2	PGA	open	pins 2 & 3	pins 2 & 3	pins 2 & 3	pins 2 & 3
ODP486SX	PGA	open	pins 2 & 3	pins 2 & 3	pins 1 & 2	pins 2 & 3
80486DX	PGA	open	pins 2 & 3	pins 2 & 3	pins 2 & 3	pins 2 & 3
80487SX	PGA	open	pins 2 & 3	pins 2 & 3	pins 1 & 2	pins 2 & 3
80486SX	PQFP	closed	pins 1 & 2	pins 1 & 2	open	pins 1 & 2

Note: Pins designated should be in the closed position.

CPU SPEED/BUS SPEED CONFIGURATION					
CPU Speed	Bus Clock	JP8	JP9	JP10	JP11
16MHz	SYS/4	pins 2 & 3	pins 2 & 3	pins 1 & 2	pins 2 & 3
20MHz	SYS/5	pins 2 & 3	pins 1 & 2	pins 1 & 2	pins 2 & 3
25MHz	SYS/6	pins 1 & 2	pins 2 & 3	pins 1 & 2	pins 2 & 3
33MHz	SYS/8	pins 1 & 2	pins 1 & 2	pins 1 & 2	pins 2 & 3
40MHz	SYS/5	pins 2 & 3	pins 1 & 2	pins 2 & 3	pins 1 & 2

Note: Pins designated should be in the closed position.

DRAM CONFIGURATION		
Size	Bank 0	Bank 1
1MB	(4) 256K x 9	NONE
2MB	(4) 256K x 9	(4) 256K x 9
4MB	(4) 1M x 9	NONE
5MB	(4) 256K x 9	(4) 1M x 9
8MB	(4) 1M x 9	(4) 1M x 9
16MB	(4) 4M x 9	NONE
32MB	(4) 4M x 9	(4) 4M x 9