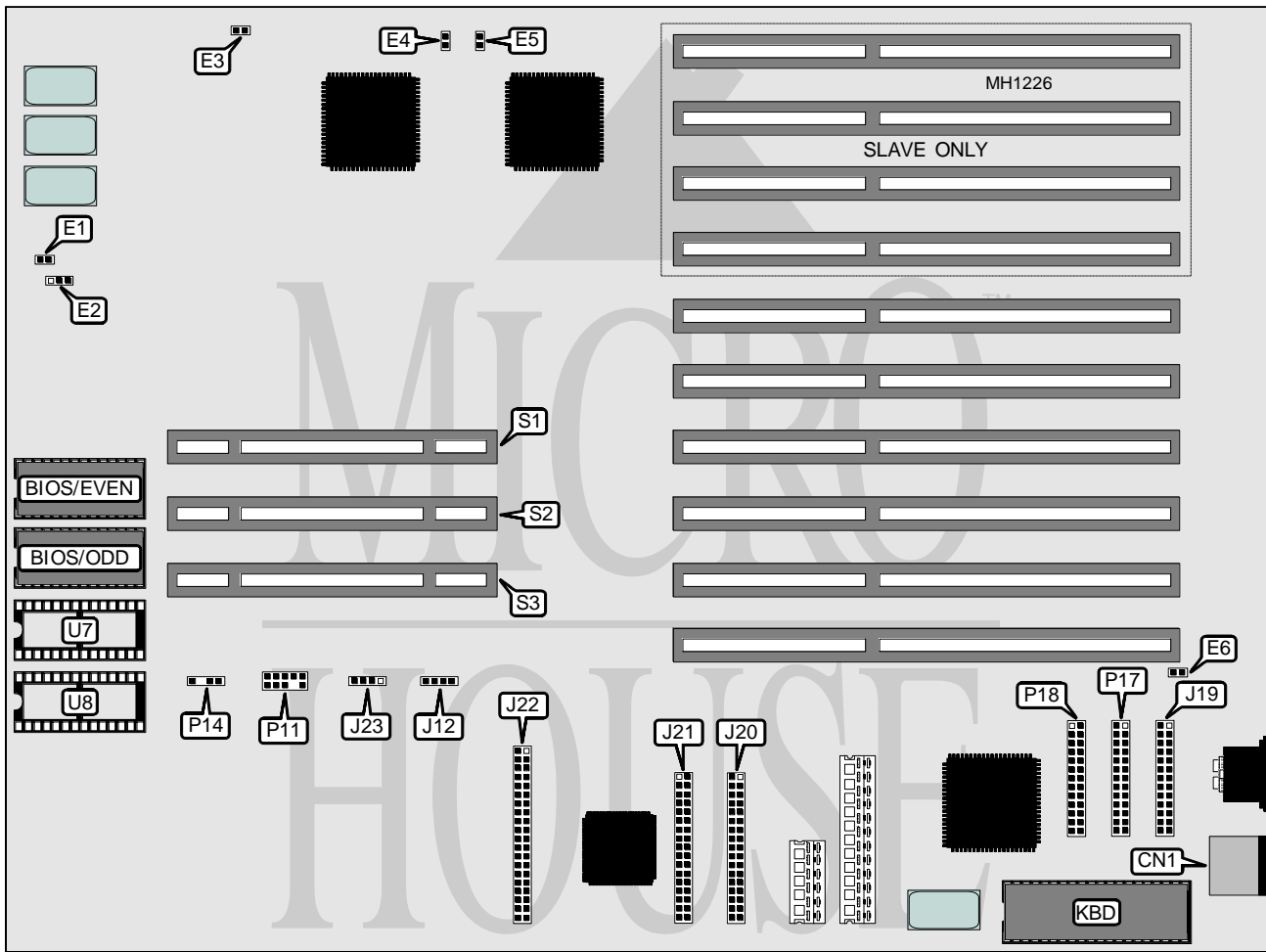


AST RESEARCH, INC.

PREMIUM SE 486/50 (MODEL 202377-002)

| | |
|--------------------------|---|
| Processor | 80486DX (on external CPU/Memory module) |
| Processor Speed | 50MHz |
| Chip Set | AST |
| Max. Onboard DRAM | None (32MB on external CPU/Memory module) |
| Cache | None (256KB on external CPU/Memory module) |
| BIOS | AST |
| Dimensions | 355mm x 266mm |
| I/O Options | 32-bit external CPU/Memory module slot 32-bit external Memory module slot (2) bus mouse port, floppy drive interface IDE interface, parallel port, serial port (2) |
| NPU Options | None |



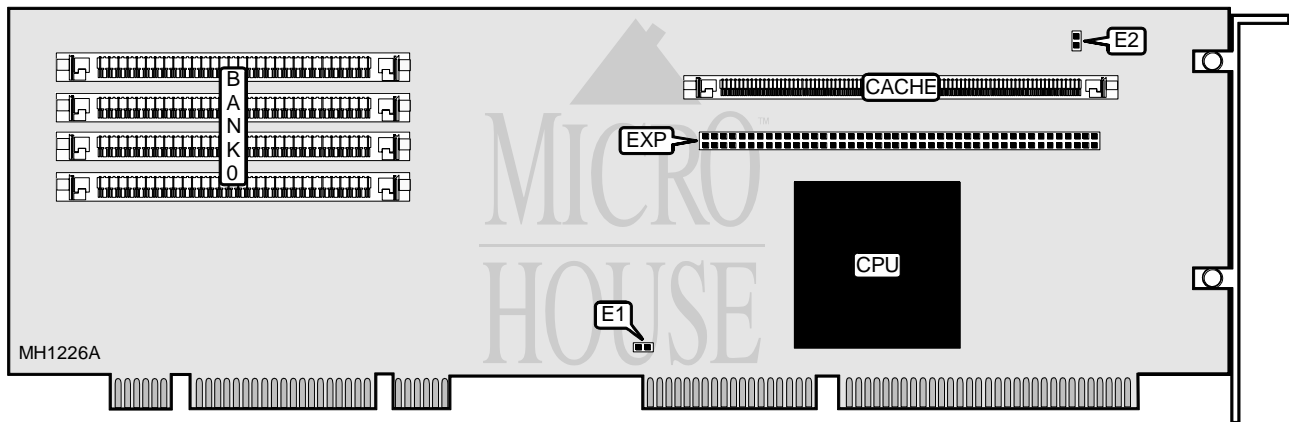
Continued on next page . . .

AST RESEARCH, INC. PREMIUM SE 486/50 (MODEL 202377-002)

... continued from previous page

| CONNECTIONS | | | |
|------------------------------------|----------|-------------------------------------|----------|
| Purpose | Location | Purpose | Location |
| Bus mouse port | CN1 | External battery | P14 |
| Speaker | J12 | Serial port 1 (COM1) | P17 |
| Parallel port | J19 | Serial port 2 (COM2) | P18 |
| Floppy drive interface (A: and B:) | J20 | 32-bit external CPU/Memory module | S1 |
| Third floppy drive interface | J21 | 32-bit external Memory module slots | S2 & S3 |
| IDE interface | J22 | Optional ROM (even) | U7 |
| IDE interface LED | J23 | Optional ROM (odd) | U8 |
| Front panel switches & LEDs | P11 | | |

| USER CONFIGURABLE SETTINGS | | |
|-------------------------------------|--------|-------------------|
| Function | Jumper | Position |
| í Factory configured - do not alter | E1 | open |
| í Password check enabled | E2 | pins 2 & 3 closed |
| Password check disabled | E2 | pins 1 & 2 closed |
| í Factory configured - do not alter | E3 | open |
| í Factory configured - do not alter | E4 | closed |
| í Factory configured - do not alter | E5 | closed |
| í Factory configured - do not alter | E6 | open |



| CONNECTIONS | |
|-------------------------|----------|
| Purpose | Location |
| Reserved for future use | EXP |

| USER CONFIGURABLE SETTINGS | | |
|----------------------------|--------|----------|
| Function | Jumper | Position |
| í Parity check enabled | E1 | closed |
| Parity check disabled | E1 | open |
| í Cache enabled | E2 | closed |
| Cache disabled | E2 | open |

Note: AST CPU/Memory module part number is 202465-005.

Continued on next page . . .

AST RESEARCH, INC.
PREMIUM SE 486/50 (MODEL 202377-002)

... continued from previous page

| DRAM CONFIGURATION | |
|--|------------|
| Size | Bank 0 |
| 16MB | (4) 4M x 9 |
| 32MB | (4) 8M x 9 |
| <p>Notes: 256KB of SRAM Cache is included as a module on the CPU/Memory module. 384KB of DRAM is reserved for System and VGA BIOS shadowing and cannot be disabled. Up to two of the following memory boards may be installed in addition to the CPU/Memory module: AST part numbers 202275-004, 202275-006, 202387-001, 202387-004 or 202387-005.</p> | |