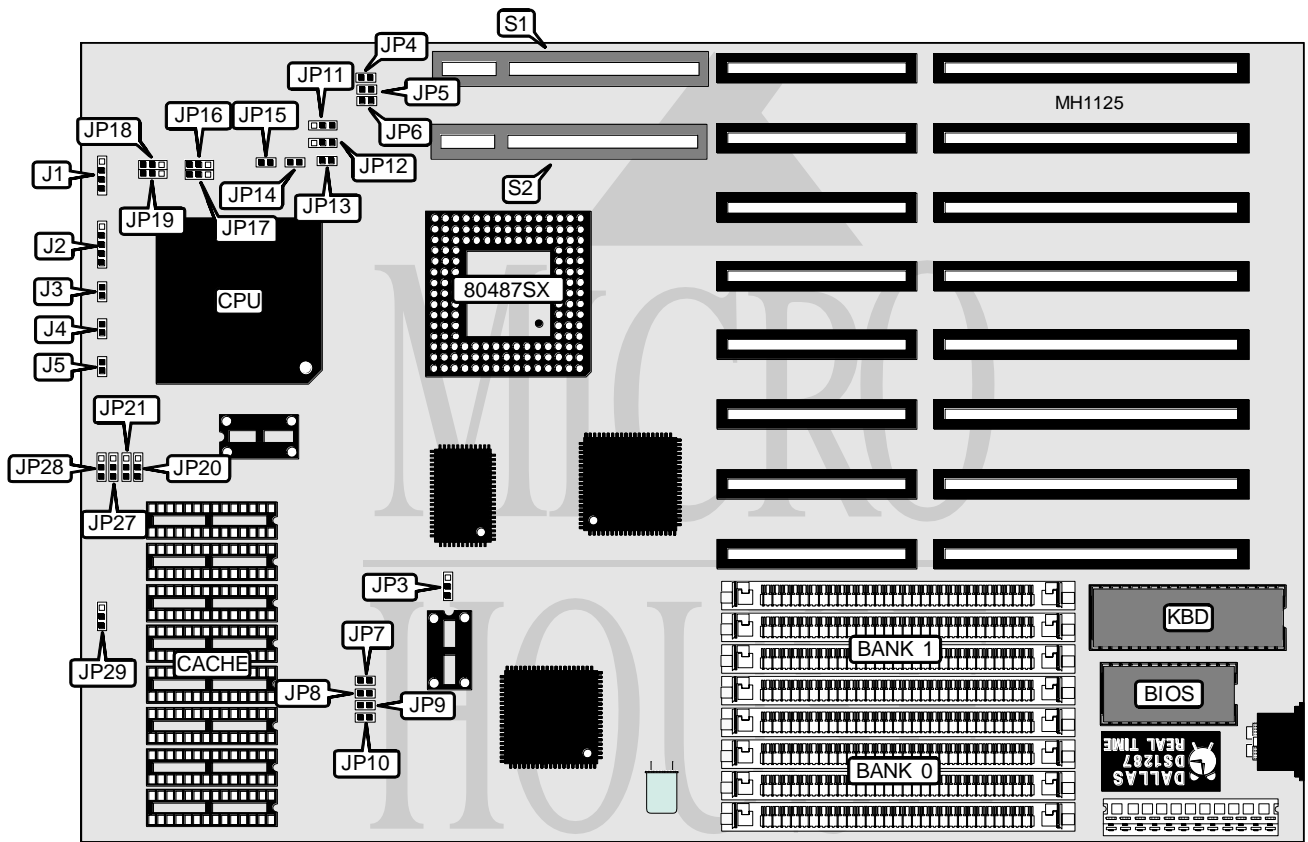


# YOUNG MICRO SYTEMS, INC.

## VEGA 486F-2VL

<b>Processor</b>	80486SX/80487SX/80486DX/ODP486SX/80486DX2
<b>Processor Speed</b>	16/20/25/33/50(internal)/50/66(internal)MHz
<b>Chip Set</b>	Symphony
<b>Max. Onboard DRAM</b>	64MB
<b>Cache</b>	64/256/1024KB
<b>BIOS</b>	AMI
<b>Dimensions</b>	330mm x 218mm
<b>I/O Options</b>	32-bit VESA local bus slots (2)
<b>NPU Options</b>	None



CONNECTIONS			
Purpose	Location	Purpose	Location
Speaker	J1	Turbo LED	J4
Power LED & keylock	J2	Turbo switch	J5
Reset	J3	32-bit VESA local bus slots	S1 & S2

Continued on next page . . .

# YOUNG MICRO SYTEMS, INC.

## VEGA 486F-2VL

... continued from previous page

USER CONFIGURABLE SETTINGS		
Function	Jumper	Position
í VESA I/O wait states select zero	JP5	Open
VESA I/O wait states select one	JP5	Open
í Factory configured - do not alter	JP6	Closed
í VESA timing select T3 speed 16 - 33MHz)	JP7	Closed
VESA timing select T3 (speed 50MHz)	JP7	Open
í I/O wait states select zero	JP10	Closed
I/O wait states select one	JP10	Open
í Phase select X2 <sup>1</sup>	JP11	pins 2 & 3 closed
Phase select X1 <sup>1</sup>	JP11	pins 1 & 2 closed
í Phase select X2 <sup>1</sup>	JP12	pins 2 & 3 closed
Phase select X1 <sup>1</sup>	JP12	pins 1 & 2 closed
í Phase select X2 <sup>1</sup>	JP18	pins 2 & 3 closed
Phase select X1 <sup>1</sup>	JP18	pins 1 & 2 closed
í Phase select X2 <sup>1</sup>	JP19	pins 2 & 3 closed
Phase select X1 <sup>1</sup>	JP19	pins 1 & 2 closed
í Factory configured - do not alter	JP13	Closed
í Factory configured - do not alter	JP14	Closed

Note:<sup>1</sup> Phase X1 is only used when an 80486DX2-50 CPU is installed.

DRAM CONFIGURATION		
Size	Bank 0	Bank 1
1MB	(4) 256K x 9	NONE
2MB	(4) 256K x 9	(4) 256K x 9
4MB	(4) 1M x 9	NONE
5MB	(4) 1M x 9	NONE
8MB	(4) 1M x 9	(4) 1M x 9
16MB	(4) 4M x 9	NONE
17MB	(4) 256K x 9	(4) 4M x 9
20MB	(4) 1M x 9	(4) 4M x 9
32MB	(4) 4M x 9	(4) 4M x 9
64MB	(4) 16M x 9	NONE

CACHE CONFIGURATION	
Size	Bank 0
64KB	(8) 8K x 8
256KB	(8) 32K x 8
1MB	(8) 128K x 8

CACHE JUMPER CONFIGURATION					
Size	JP20	JP21	JP27	JP28	JP29
64KB	1 & 2	1 & 2	1 & 2	1 & 2	1 & 2
256KB	1 & 2	2 & 3	2 & 3	1 & 2	2 & 3
1MB	2 & 3	2 & 3	2 & 3	2 & 3	2 & 3

Note: Pins designated should be in the closed position.

Continued on next page . . .

## YOUNG MICRO SYTEMS, INC.

## VEGA 486F-2VL

... continued from previous page

CPU TYPE CONFIGURATION			
Type	JP15	JP16	JP17
80486SX	Closed	pins 1 & 2 closed	pins 2 & 3 closed
ODP486SX	Closed	pins 1 & 2 closed	pins 2 & 3 closed
80487SX	Open	Closed	Open
80486DX	Closed	pins 1 & 2 closed	pins 1 & 2 closed
80486DX2	Closed	pins 1 & 2 closed	pins 1 & 2 closed

CPU SPEED CONFIGURATION				
Speed	JP3	JP4	JP8	JP9
16/20/25MHz	Open	Open	Open	Open
33MHz	pins 1 & 2 closed	Open	Open	Open
50MHz	pins 2 & 3 closed	Closed	Closed	Closed