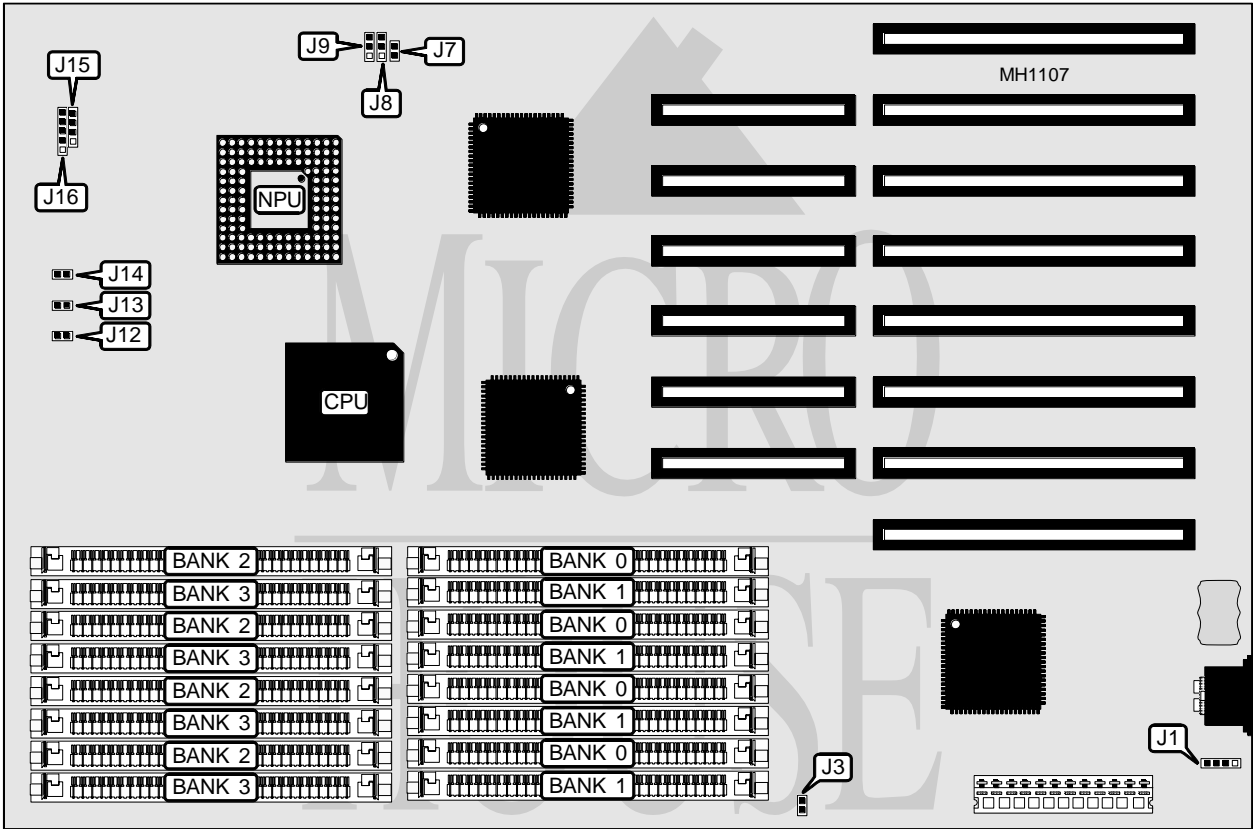


UNIDENTIFIED

386/25

Processor	80386DX
Processor Speed	25MHz
Chip Set	OPTI
Max. Onboard DRAM	16MB
Cache	None
BIOS	AMI
Dimensions	331mm x 219mm
I/O Options	None
NPU Options	80387/3167



CONNECTIONS			
Purpose	Location	Purpose	Location
Reset switch	J12	Speaker	J15
Turbo switch	J13	Power LED & keylock	J16
Turbo LED	J14	External battery	J1 pins 1 & 4

Continued on next page . . .

UNIDENTIFIED

386/25

... continued from previous page

USER CONFIGURABLE SETTINGS		
Function	Jumper	Position
í Battery type select internal	J1	pins 2 & 3 closed
Battery type select external	J1	Closed
í Monitor type select monochrome	J3	Open
Monitor type select color	J3	Closed
í Factory configured - do not alter	J7	N/A
í Factory configured - do not alter	J8	N/A
í Factory configured - do not alter	J9	N/A
Note: Jumpers J7, J8, and J9 are used on a different revision of this board to configure cache. They are not used on this board.		

DRAM CONFIGURATION				
Size	Bank 0	Bank 1	Bank 2	Bank 3
1MB	(4) 256K x 9	NONE	NONE	NONE
2MB	(4) 256K x 9	(4) 256K x 9	NONE	NONE
3MB	(4) 256K x 9	(4) 256K x 9	(4) 256K x 9	NONE
4MB	(4) 256K x 9	(4) 256K x 9	(4) 256K x 9	(4) 256K x 9
4MB	(4) 1M x 9	NONE	NONE	NONE
5MB	(4) 256K x 9	(4) 1M x 9	NONE	NONE
5MB	(4) 1M x 9	(4) 256K x 9	NONE	NONE
6MB	(4) 256K x 9	(4) 256K x 9	(4) 1M x 9	NONE
6MB	(4) 256K x 9	(4) 1M x 9	(4) 256K x 9	NONE
6MB	(4) 1M x 9	(4) 256K x 9	(4) 256K x 9	NONE
7MB	(4) 256K x 9	(4) 256K x 9	(4) 1M x 9	(4) 256K x 9
7MB	(4) 256K x 9	(4) 1M x 9	(4) 256K x 9	(4) 256K x 9
7MB	(4) 1M x 9	(4) 256K x 9	(4) 256K x 9	(4) 256K x 9
8MB	(4) 1M x 9	(4) 1M x 9	NONE	NONE
9MB	(4) 256K x 9	(4) 1M x 9	(4) 1M x 9	NONE
9MB	(4) 1M x 9	(4) 256K x 9	(4) 1M x 9	NONE
9MB	(4) 1M x 9	(4) 1M x 9	(4) 256K x 9	NONE
10MB	(4) 256K x 9	(4) 256K x 9	(4) 1M x 9	(4) 1M x 9
10MB	(4) 256K x 9	(4) 1M x 9	(4) 1M x 9	(4) 256K x 9
10MB	(4) 1M x 9	(4) 1M x 9	(4) 256K x 9	(4) 256K x 9
10MB	(4) 1M x 9	(4) 256K x 9	(4) 1M x 9	(4) 256K x 9
12MB	(4) 1M x 9	(4) 1M x 9	(4) 1M x 9	NONE
13MB	(4) 256K x 9	(4) 1M x 9	(4) 1M x 9	(4) 1M x 9
13MB	(4) 1M x 9	(4) 1M x 9	(4) 1M x 9	(4) 256K x 9
13MB	(4) 1M x 9	(4) 256K x 9	(4) 1M x 9	(4) 1M x 9
16MB	(4) 1M x 9	(4) 1M x 9	(4) 1M x 9	(4) 1M x 9