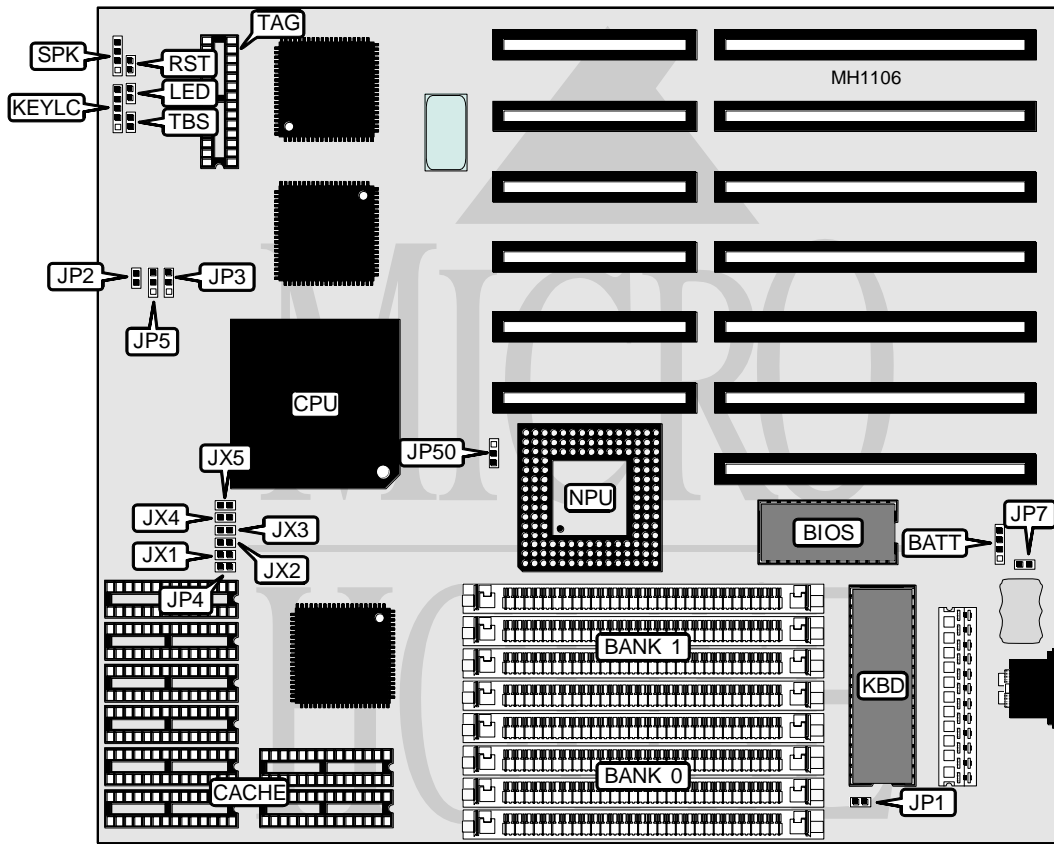


J-BOND COMPUTER SYSTEMS CORPORATION

486 CACHE

Processor 80486SX/80487SX/80486DX/ODP486SX/80486DX2
Processor Speed 20/25/33/40/50(internal)/50/66(internal)MHz
Chip Set ETEQ
Max. Onboard DRAM 32MB
Cache 64/256KB
BIOS AMI
Dimensions 221mm x 254mm
I/O Options None
NPU Options 4167



CONNECTIONS			
Purpose	Location	Purpose	Location
External battery	BATT	Reset switch	RST
Power LED & keylock	KEYLC	Speaker	SPK
Turbo LED	LED	Turbo switch	TBS

Continued on next page . . .

J-BOND COMPUTER SYSTEMS CORPORATION

486 CACHE

... continued from previous page

USER CONFIGURABLE SETTINGS		
Function	Jumper	Position
í CPU speed select switchable at keyboard	JP1	Closed
CPU speed select switchable at turbo switch	JP1	Open
í Battery type select internal	JP7	Closed
Battery type select external	JP7	Open
í CPU speed select iOSC/2	JP50	pins 2 & 3 closed
CPU speed select iOSC/1	JP50	pins 1 & 2 closed

DRAM CONFIGURATION		
Size	Bank 0	Bank 1
1MB	(4) 256K x 9	NONE
2MB	(4) 256K x 9	(4) 256K x 9
4MB	(4) 1M x 9	NONE
5MB	(4) 256K x 9	(4) 1M x 9
8MB	(4) 1M x 9	(4) 1M x 9
16MB	(4) 4M x 9	NONE
17MB	(4) 4M x 9	(4) 256K x 9
20MB	(4) 1M x 9	(4) 4M x 9
32MB	(4) 4M x 9	(4) 4M x 9

CACHE CONFIGURATION		
Size	Bank 0	TAG
64KB	(8) 8K x 8	(1) 8K x 8
256KB	(8) 32K x 8	(1) 32K x 8

CACHEJUMPER CONFIGURATION				
Size	JP2	JP3	JP4	JP5
64KB	Open	pins 1 & 2 closed	Open	pins 1 & 2 closed
256KB	Closed	pins 2 & 3 closed	Closed	pins 2 & 3 closed

CPU TYPE CONFIGURATION					
Type	JX1	JX2	JX3	JX4	JX5
80486SX	Open	Open	Open	Closed	Open
80487SX	Open	Closed	Closed	Open	Closed
ODP486SX	Open	Closed	Closed	Open	Closed
80486DX	Closed	Open	Closed	Open	Closed
80486DX2	Closed	Open	Closed	Open	Closed