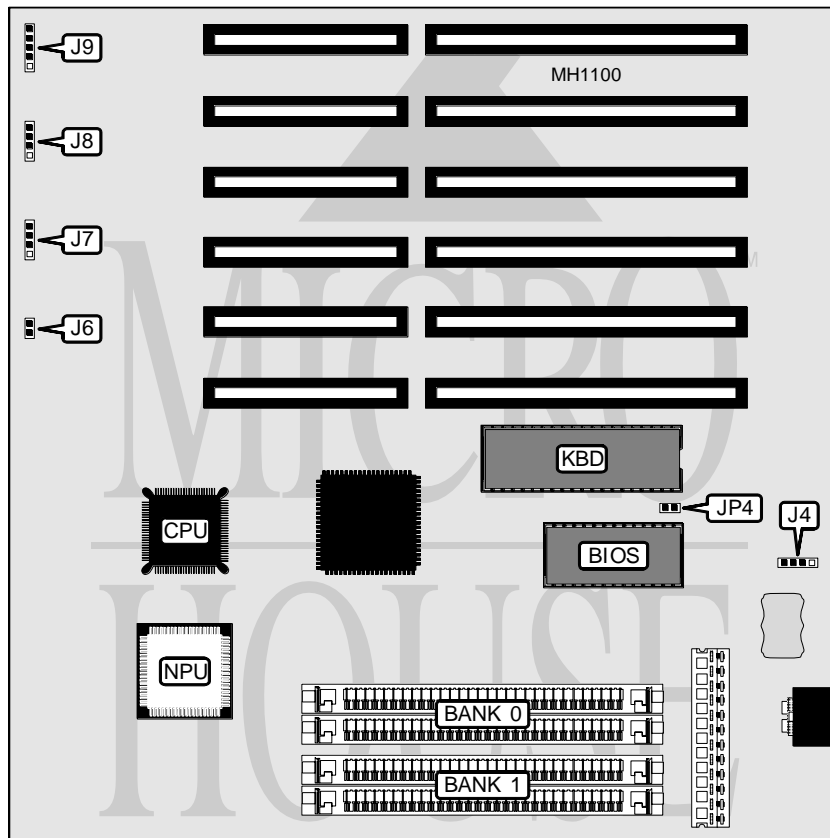


J-MARK COMPUTER CORPORATION 386SX (VERSION II)

Processor	80386SX/CX486SLC
Processor Speed	33MHz
Chip Set	ALI
Max. Onboard DRAM	16MB
Cache	None
BIOS	AMI
Dimensions	220mm x 220mm
I/O Options	None
NPU Options	80387SX/CX83S87



CONNECTIONS			
Purpose	Location	Purpose	Location
External battery	J4	Turbo LED	J8/pins 1 & 2
Reset switch	J6	Turbo switch	J8/pins 4 & 5
Speaker	J7	Power LED & keylock	J9

Continued on next page . . .

J-MARK COMPUTER CORPORATION

386SX (VERSION II)

... continued from previous page

USER CONFIGURABLE SETTINGS

Function	Jumper	Position
í Monitor type select monochrome	JP4	pins 1 & 2 closed
Monitor type select color	JP4	pins 2 & 3 closed

DRAM CONFIGURATION

Size	Bank 0	Bank 1
512KB	(2) 256K x 9	NONE
1MB	(2) 256K x 9	(2) 256K x 9
2MB	(2) 1M x 9	NONE
4MB	(2) 1M x 9	(2) 1M x 9
8MB	(2) 4M x 9	NONE
16MB	(2) 4M x 9	(2) 4M x 9