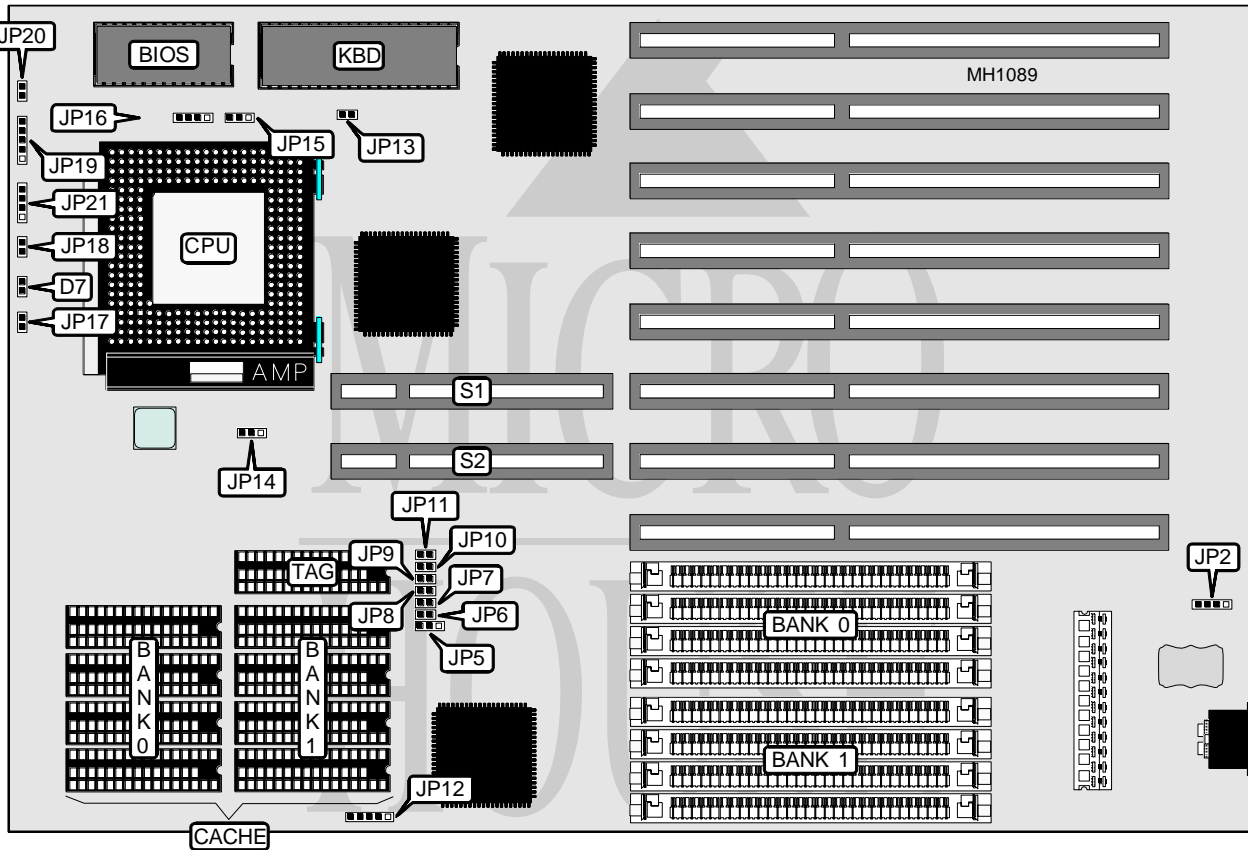


# LION COMPUTERS, INC.

## 486 MINI EISA/VP

<b>Processor</b>	80486SX/80487SX/80486DX/ODP486SX/80486DX2/ODP586SX
<b>Processor Speed</b>	16/20/25/33/40/50(internal)/50/66(internal)MHz
<b>Chip Set</b>	C & T
<b>Max. onboard DRAM</b>	128MB
<b>Cache</b>	128/256/512/1024KB
<b>BIOS</b>	AMI
<b>Dimensions</b>	330mm x 218mm
<b>I/O Options</b>	32-bit VESA local bus slots (2)
<b>NPU Options</b>	None



CONNECTIONS			
Purpose	Location	Purpose	Location
Turbo LED	D7	Reset switch	JP20
External battery	JP2	Speaker	JP21
Turbo switch	JP18	32-bit VESA local bus slots	S1 & S2
Power LED & keylock	JP19		

Continued on next page . . .

# LION COMPUTERS, INC.

## 486 MINI EISA/VP

... continued from previous page

USER CONFIGURABLE SETTINGS		
Function	Jumper	Position
í Factory configured - do not alter (VESA host ID select)	JP9	Open
í Factory configured - do not alter (VESA host ID select)	JP10	Open
í Factory configured - do not alter	JP11	Closed
í Monitor type select color	JP13	Closed
Monitor type select monochrome	JP13	Open
í CPU speed $\geq$ 33MHz	JP14	pins 1 & 2 closed
CPU speed < 33MHz	JP14	pins 2 & 3 closed

DRAM CONFIGURATION		
Size	Bank 0	Bank 1
1MB	(4) 256K x 9	NONE
2MB	(4) 256K x 9	(4) 256K x 9
4MB	(4) 1M x 9	NONE
5MB	(4) 256K x 9	(4) 1M x 9
8MB	(4) 1M x 9	(4) 1M x 9
16MB	(4) 4M x 9	NONE
17MB	(4) 256K x 9	(4) 4M x 9
20MB	(4) 1M x 9	(4) 4M x 9
32MB	(4) 4M x 9	(4) 4M x 9
64MB	(4) 16M x 9	NONE
68MB	(4) 1M x 9	(4) 16M x 9
96MB	(4) 4M x 9	(4) 16M x 9
128MB	(4) 16M x 9	(4) 16M x 9

CACHE CONFIGURATION			
Size	Bank 0	Bank 1	TAG
128KB	(4) 32K x 8	NONE	(1) 8K x 8
256KB	(4) 32K x 8	(4) 32K x 8	(1) 32K x 8
512KB	(4) 128K x 8	NONE	(1) 128K x 8
1MB	(4) 128K x 8	(4) 128K x 8	(1) 128K x 8

Continued on next page . . .

# LION COMPUTERS, INC.

## 486 MINI EISA/VP

... continued from previous page

CACHE JUMPER CONFIGURATION					
Size	JP5	JP6	JP7	JP8	JP12
128KB	2 & 3	Open	Closed	Open	1 & 2, 3 & 4
256KB	2 & 3	Closed	Closed	Closed	1 & 2, 4 & 5
512KB	1 & 2	Closed	Open	Closed	2 & 3, 4 & 5
1MB	2 & 3	Closed	Closed	Closed	1 & 2, 4 & 5

Note: Pins designated should be in the closed position.

CPU TYPE CONFIGURATION		
Type	JP15	JP16
80486SX	Open	pins 2 & 3 closed
80487SX	pins 2 & 3 closed	pins 1 & 2, 3 & 4 closed
ODP486SX	pins 1 & 2 closed	pins 1 & 2, 3 & 4 closed
80486DX	pins 1 & 2 closed	pins 1 & 2, 3 & 4 closed
80486DX2	pins 1 & 2 closed	pins 1 & 2, 3 & 4 closed
ODP586SX	pins 1 & 2 closed	pins 1 & 2, 3 & 4 closed

Note: The ODP586SX chip is not supported by earlier revisions of this system board.