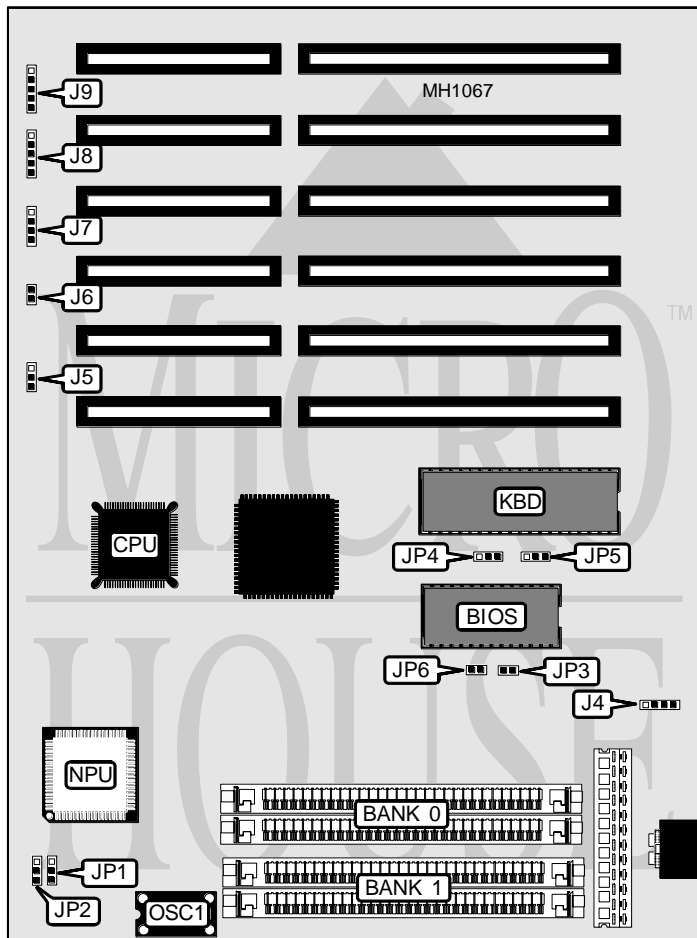


NEWTON NET TECHNOLOGY, INC.

NE386NS

Processor	80386SX
Processor Speed	25/33MHz
Chip Set	ALI
Max. Onboard DRAM	16MB
Cache	None
BIOS	AMI/Award
Dimensions	184mm x 247mm
I/O Options	None
NPU Options	80387SX



CONNECTIONS			
Purpose	Location	Purpose	Location
External battery	J4	Turbo switch and LED	J8
Reset switch	J6	Power LED & keylock	J9
Speaker	J7		

Continued on next page . . .

NEWTON NET TECHNOLOGY, INC.

NE386NS

... continued from previous page

USER CONFIGURABLE SETTINGS		
Function	Jumper	Position
í Address delay enabled	J5	pins 1 & 2 closed
Address delay disabled	J5	Open
í NPU mode select synchronous with CPU	JP2	pins 1 & 2 closed
í NPU mode select asynchronous with CPU	JP2	pins 2 & 3 closed
í RTC type select 145818	JP3	Open
RTC type select DS1287	JP3	Closed
í Monitor type select color	JP4	pins 2 & 3 closed
Monitor type select monochrome	JP4	pins 1 & 2 closed
í Parity check enabled	JP5	pins 1 & 2 closed
Parity check disabled	JP5	pins 2 & 3 closed

DRAM CONFIGURATION		
Size	Bank 0	Bank 1
512KB	(2) 256K x 9	NONE
1MB	(2) 256K x 9	(2) 256K x 9
2MB	(2) 1M x 9	NONE
4MB	(2) 1M x 9	(2) 1M x 9
8MB	(2) 4M x 9	NONE
16MB	(2) 4M x 9	(2) 4M x 9

CPU SPEED CONFIGURATION		
Speed	JP1	JP5
25MHz	pins 1 & 2 closed	pins 1 & 2 closed
33MHz	pins 2 & 3 closed	pins 2 & 3 closed