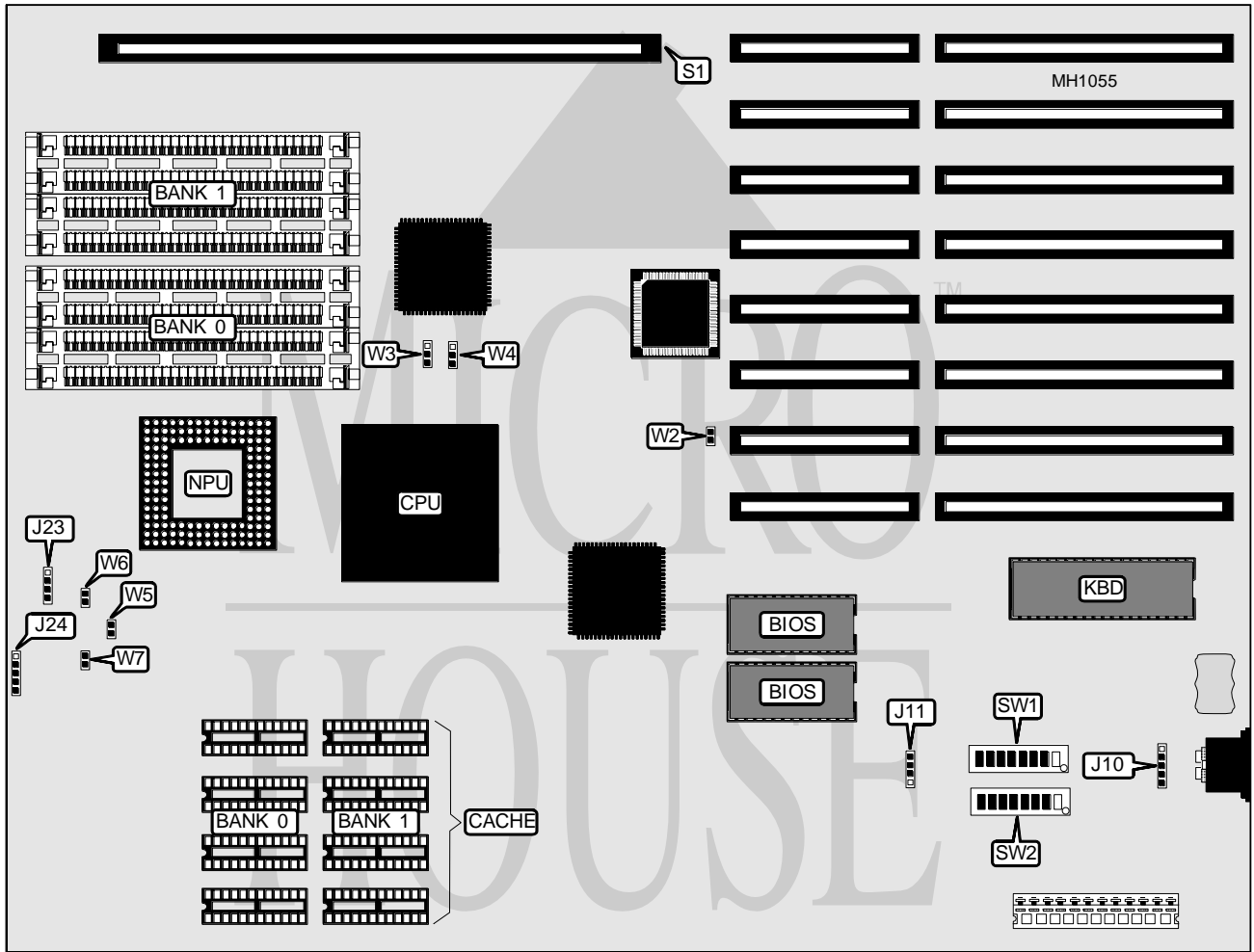


SAMSUNG ELECTRONICS AMERICA, INC.

POWERMASTER SD931

Processor	80486DX
Processor Speed	25/33MHz
Chip Set	Micronics
Max. Onboard DRAM	32MB
Cache	64/128/256KB
BIOS	Phoenix
Dimensions	355mm x 271mm
I/O Options	32-bit external memory card slot
NPU Options	4167



CONNECTIONS			
Purpose	Location	Purpose	Location
External battery	J11	Reset switch	W6
Speaker	J23	Turbo switch	W7
Power LED & keylock	J24	32-bit external memory card	S1
Turbo LED	W5		

Continued on next page . . .

SAMSUNG ELECTRONICS AMERICA, INC.
POWERMASTER SD931

... continued from previous page

USER CONFIGURABLE SETTINGS		
Function	Switch	Position
í Factory configured - do not alter	SW1/1	On
í Factory configured - do not alter	SW1/2	Off
í Factory configured - do not alter	SW1/3	Off
í Factory configured - do not alter	SW1/4	Off
í Factory configured - do not alter	SW1/5	Off
í Video BIOS select cacheable	SW1/6	On
Video BIOS select non-cacheable	SW1/6	Off
CPU speed select 33MHz	SW1/7	Off
CPU speed select 25MHz	SW1/7	On
í Factory configured - do not alter	SW1/8	On
í Factory configured - do not alter	SW1/6	On

DRAM CONFIGURATION		
Size	Bank 0	Bank 1
1MB	(4) 256K x 9	NONE
2MB	(4) 256K x 9	(4) 256K x 9
4MB	(4) 1M x 9	NONE
5MB	(4) 256K x 9	(4) 1M x 9
8MB	(4) 1M x 9	(4) 1M x 9
16MB	(4) 4M x 9	NONE
20MB	(4) 1M x 9	(4) 4M x 9
32MB	(4) 4M x 9	(4) 4M x 9

DRAM SWITCH CONFIGURATION					
Size	SW2/1	SW2/2	SW2/3	SW2/4	SW2/5
1MB	On	On	On	On	On
2MB	Off	On	On	On	On
4MB	On	On	Off	On	On
5MB	On	On	Off	Off	On
8MB	Off	On	Off	On	On
16MB	On	On	Off	On	Off
20MB	On	On	Off	Off	Off
32MB	Off	On	Off	On	Off

CACHE CONFIGURATION		
Size	Bank 0	Bank 1
64KB	(4) 8K x 8	(4) 8K x 8
128KB	(4) 32K x 8	NONE
256KB	(4) 32K x 8	(4) 32K x 8

CACHE JUMPER/SWITCH CONFIGURATION				
Size	W3	W4	SW2/7	SW2/8
64KB	pins 2 & 3 closed	pins 2 & 3 closed	Off	Off
128KB	pins 2 & 3 closed	pins 1 & 2 closed	On	On
256KB	pins 1 & 2 closed	pins 1 & 2 closed	Off	On

