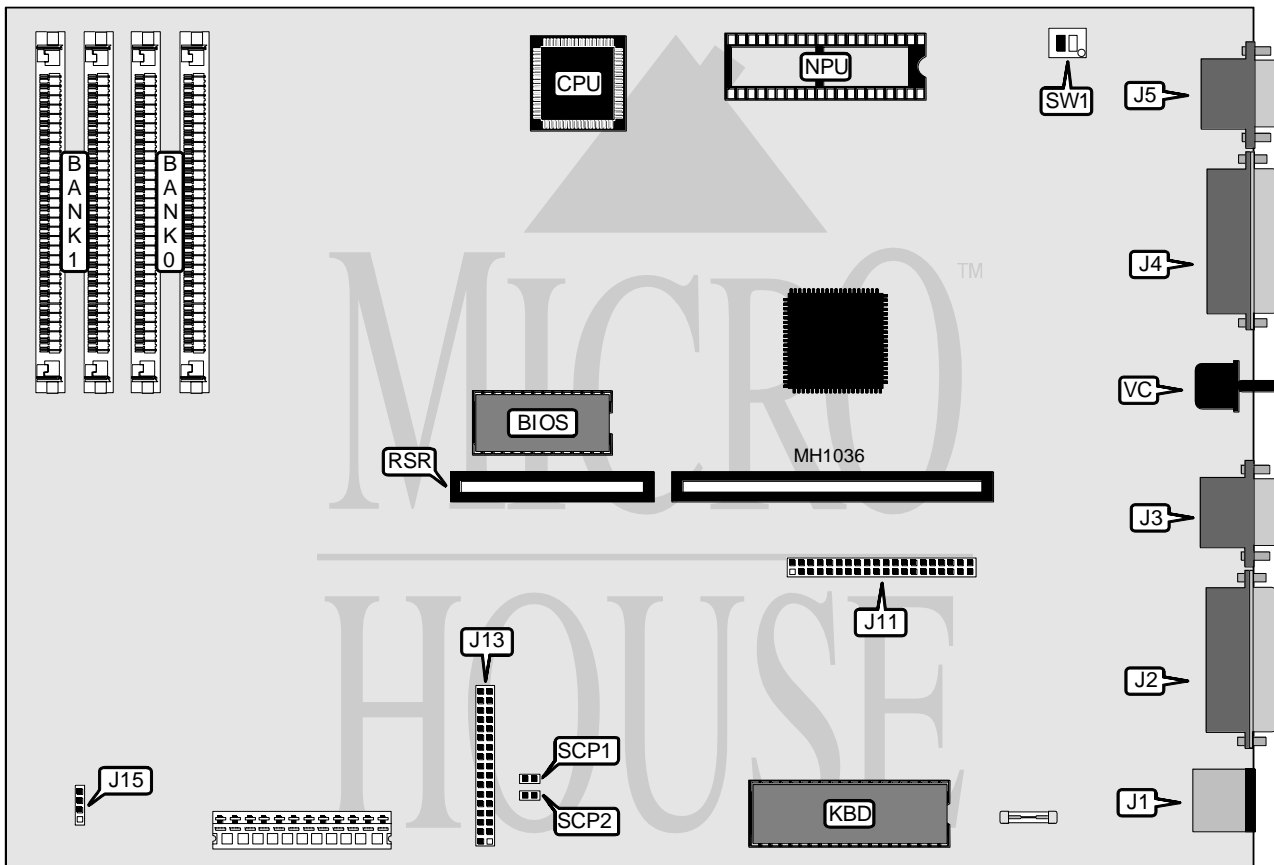


NCR CORPORATION

CLASS 3205

| | |
|--------------------------|--|
| Processor | 80286 |
| Processor Speed | 12/16MHz |
| Chip Set | SMD |
| Max. Onboard DRAM | 16MB |
| Cache | None |
| BIOS | NCR |
| Dimensions | 330mm x 218mm |
| I/O Options | Floppy drive interface, IDE interface, parallel port, serial ports (2), VGA port |
| NPU Options | 80287 |



| CONNECTIONS | | | |
|---------------|----------|-------------------------------|----------|
| Purpose | Location | Purpose | Location |
| Keyboard | J1 | IDE interface | J11 |
| Serial port 2 | J2 | Floppy drive interface | J13 |
| Serial port 1 | J3 | Power LED & IDE interface LED | J15 |
| Parallel port | J4 | Riser card | RSR |
| VGA interface | J5 | Speaker volume control | VC |

Continued on next page . . .

NCR CORPORATION

CLASS 3205

... continued from previous page

| USER CONFIGURABLE SETTINGS | | |
|--------------------------------|---------------|----------|
| Function | Jumper/Switch | Position |
| í Password check enabled | SCP1 & SCP2 | Open |
| Password clear | SCP1 & SCP2 | Closed |
| í VGA interface enabled | SW1/1 | Off |
| VGA interface disabled | SW1/1 | On |
| í Monitor type select color | SW1/2 | On |
| Monitor type select monochrome | SW1/2 | Off |

| DRAM CONFIGURATION | | |
|--------------------|------------|------------|
| Size | Bank 0 | Bank 1 |
| 2MB | (2) 1M x 9 | NONE |
| 4MB | (2) 1M x 9 | (2) 1M x 9 |
| 8MB | (2) 4M x 9 | NONE |
| 10MB | (2) 4M x 9 | (2) 1M x 9 |
| 16MB | (2) 4M x 9 | (2) 4M x 9 |