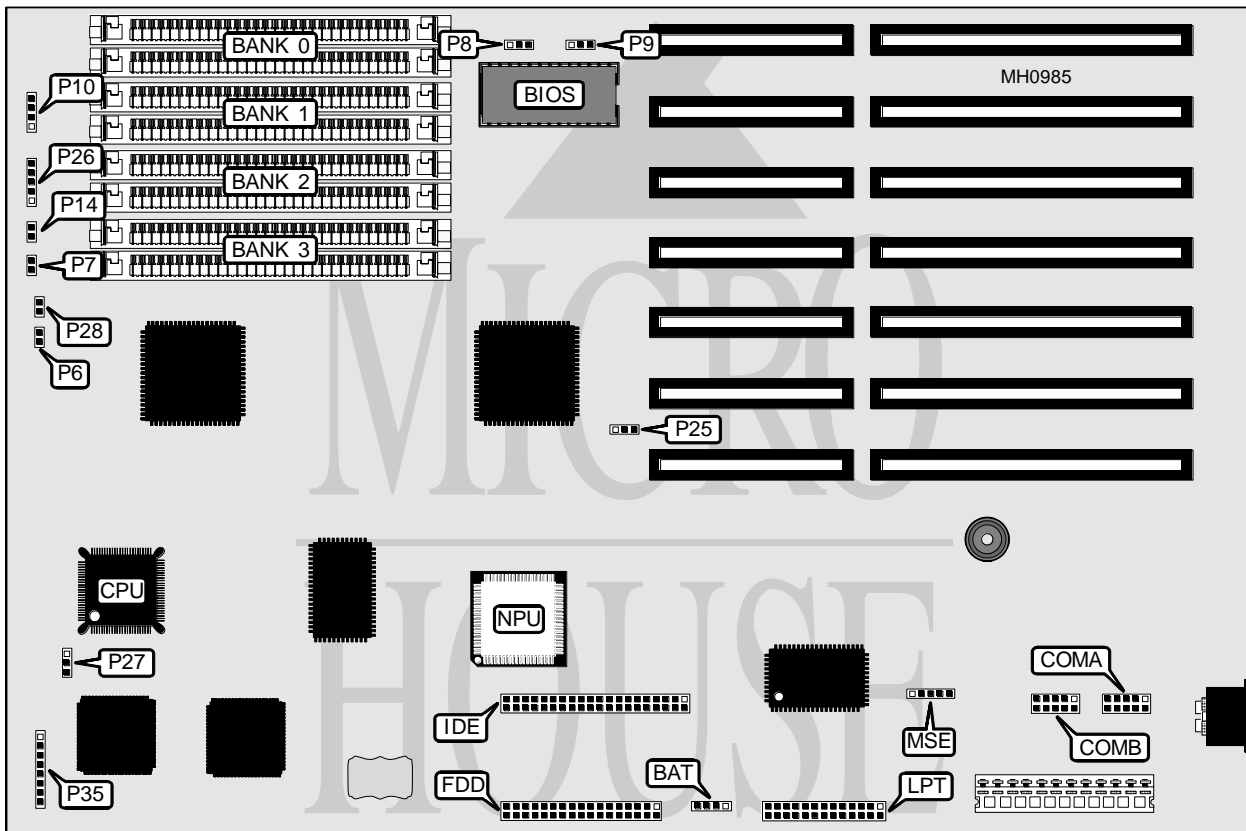


CARDINAL TECHNOLOGIES, INC.

SB386SX

Processor	80386SX
Processor Speed	16/20/25MHz
Chip Set	VLSI
Max. Onboard DRAM	16MB
Cache	None
BIOS	AMI
Dimensions	331mm x 219mm
I/O Options	Bus mouse, floppy drive interface, IDE interface, parallel port, serial ports (2)
NPU Options	80387SX



CONNECTIONS			
Purpose	Location	Purpose	Location
External battery	BAT	Turbo switch	P6
Serial port 1	COMA	Turbo LED	P7
Serial port 2	COMB	Speaker	P10
Floppy drive interface	FDD	IDE interface LED	P14
Parallel port	LPT	Power LED & keylock	P26
IDE interface	IDE	Reset switch	P28
Bus mouse	MSE	Auxiliary keyboard	P35

Continued on next page . . .

CARDINAL TECHNOLOGIES, INC.

S B 3 8 6 S X

... continued from previous page

USER CONFIGURABLE SETTINGS		
Function	Jumper	Position
í Monitor type select color	P25	pins 1 & 2 closed
Monitor type select monochrome	P25	pins 2 & 3 closed
í Pipeline mode enabled	P27	pins 1 & 2 closed
Pipeline mode disabled	P27	pins 2 & 3 closed
Note: Jumper P27 may not be present on all board revisions.		

DRAM CONFIGURATION				
Size	Bank 0	Bank 1	Bank 2	Bank 3
512KB	(2) 256K x 9	NONE	NONE	NONE
1MB	(2) 256K x 9	(2) 256K x 9	NONE	NONE
1.5MB	(2) 256K x 9	(2) 256K x 9	(2) 256K x 9	NONE
2MB	(2) 256K x 9	(2) 256K x 9	(2) 256K x 9	(2) 256K x 9
2MB	(2) 1M x 9	NONE	NONE	NONE
3MB	(2) 256K x 9	(2) 256K x 9	(2) 1M x 9	NONE
4MB	(2) 1M x 9	(2) 1M x 9	NONE	NONE
5MB	(2) 256K x 9	(2) 256K x 9	(2) 1M x 9	(2) 1M x 9
6MB	(2) 1M x 9	(2) 1M x 9	(2) 1M x 9	NONE
8MB	(2) 1M x 9	(2) 1M x 9	(2) 1M x 9	(2) 1M x 9
8MB	(2) 4M x 9	NONE	NONE	NONE
9MB	(2) 256K x 9	(2) 256K x 9	(2) 1M x 9	NONE
12MB	(2) 1M x 9	(2) 1M x 9	(2) 4M x 9	NONE
16MB	(2) 4M x 9	(2) 4M x 9	NONE	NONE

BIOS CONFIGURATION		
Type	P8	P9
Normal	pins 1 & 2 closed	pins 1 & 2 closed
Flash	pins 2 & 3 closed	pins 2 & 3 closed