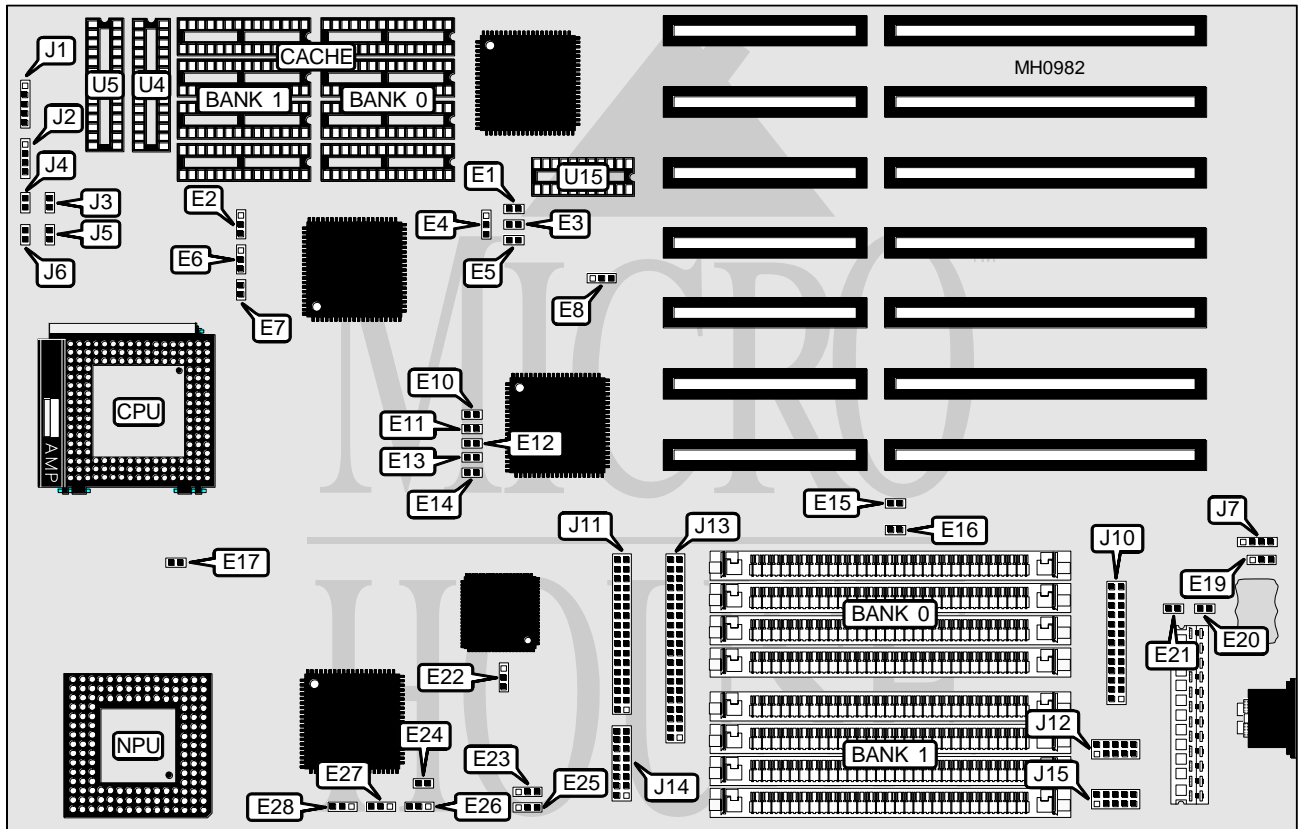


DIVERSIFIED TECHNOLOGIES

MBC1013

Processor	80486SX/80487SX/80486DX/ODP486SX/80486DX2
Processor Speed	20/25/33/40/50(internal)/50/66(internal)MHz
Chip Set	Intel
Max. Onboard DRAM	32MB
Cache	64/128/256KB
BIOS	ETI
Dimensions	330mm x 218mm
I/O Options	Floppy drive interface, IDE interface, parallel port, serial ports (2), VGA port
NPU Options	4167



CONNECTIONS			
Purpose	Location	Purpose	Location
Power LED & keylock	J1	External battery	J7
Speaker	J2	Floppy drive interface	J11
Turbo switch	J3	Serial port 2	J12
Reset switch	J4	IDE interface	J13
Turbo LED	J5	VGA port	J14
IDE interface LED	J6	Serial port 1	J15

Continued on next page . . .

DIVERSIFIED TECHNOLOGIES

MBC1013

... continued from previous page

USER CONFIGURABLE SETTINGS		
Function	Jumper	Position
í Monitor type select color	E17	Closed
Monitor type select monochrome	E17	Open
í Battery select internal	E19	pins 1 & 2 closed
Battery select external	E19	pins 2 & 3 closed
CMOS memory clear	E19	Open
í Floppy drive speed select single	E20	Open
Floppy drive speed select dual	E20	Closed
í Floppy drive interface write pre-compensation select normal	E21	Closed
Floppy drive interface write pre-compensation select alternate	E21	Open
í Factory configured - do not alter	E22	pins 1 & 2 closed
í Factory configured - do not alter	E23	pins 2 & 3 closed
í Factory configured - do not alter	E24	Open
í Factory configured - do not alter	E25	pins 1 & 2 closed
í Factory configured - do not alter	E26	pins 1 & 2 closed

DRAM CONFIGURATION		
Size	Bank 0	Bank 1
1MB	(4) 256K x 9	NONE
2MB	(4) 256K x 9	(4) 256K x 9
4MB	(4) 1M x 9	NONE
8MB	(4) 1M x 9	(4) 1M x 9
16MB	(4) 4M x 9	NONE
32MB	(4) 4M x 9	(4) 4M x 9

CACHE CONFIGURATION					
Size	Bank 0	Bank 1	TAG (U4)	TAG (U5)	Dirty Bit(U15)
64KB	(4) 8K x 8	(4) 8K x 8	(1) 8K x 8	NONE	(1) 64K x 1
128KB	(4) 32K x 8	NONE	(1) 8K x 8	NONE	(1) 64K x 1
256KB	(4) 32K x 8	(4) 32K x 8	(1) 8K x 8	(1) 8K x 8	(1) 64K x 1

CACHE JUMPER CONFIGURATION				
Cache Size	E1	E3	E4	E5
64KB	Open	Open	pins 2 & 3 closed	Open
128KB	Closed	Closed	pins 1 & 2 closed	Open
256KB	Closed	Closed	pins 2 & 3 closed	Closed

Continued on next page ...

DIVERSIFIED TECHNOLOGIES

MBC1013

... continued from previous page

CPU SPEED CONFIGURATION					
Speed	E10	E11	E12	E13	E14
20MHz	Closed	Open	Open	Open	Open
25MHz	Open	Closed	Open	Open	Open
33MHz	Open	Open	Closed	Open	Open
40MHz	Open	Open	Open	Closed	Open
50iMHz	Open	Closed	Open	Open	Open
50MHz	Open	Open	Open	Open	Closed
66iMHz	Open	Open	Closed	Open	Open

CPU TYPE CONFIGURATION			
Type	E2	E6	E7
80486SX	pins 2 & 3 closed	Open	Open
80487SX	pins 1 & 2 closed	pins 2 & 3 closed	Closed
ODP486SX	pins 1 & 2 closed	pins 2 & 3 closed	Closed
80486DX	pins 1 & 2 closed	pins 1 & 2 closed	Closed
80486DX2	pins 1 & 2 closed	pins 1 & 2 closed	Closed

VGA PORT CONFIGURATION			
Setting	E8	E27	E28
í VGA port enabled	pins 1 & 2 closed	pins 2 & 3 closed	pins 2 & 3 closed
VGA port disabled	pins 2 & 3 closed	pins 1 & 2 closed	pins 1 & 2 closed

PARALLEL PORT CONFIGURATION		
IRQ	E15	E16
IRQ7	Closed	Open
IRQ5	Open	Closed