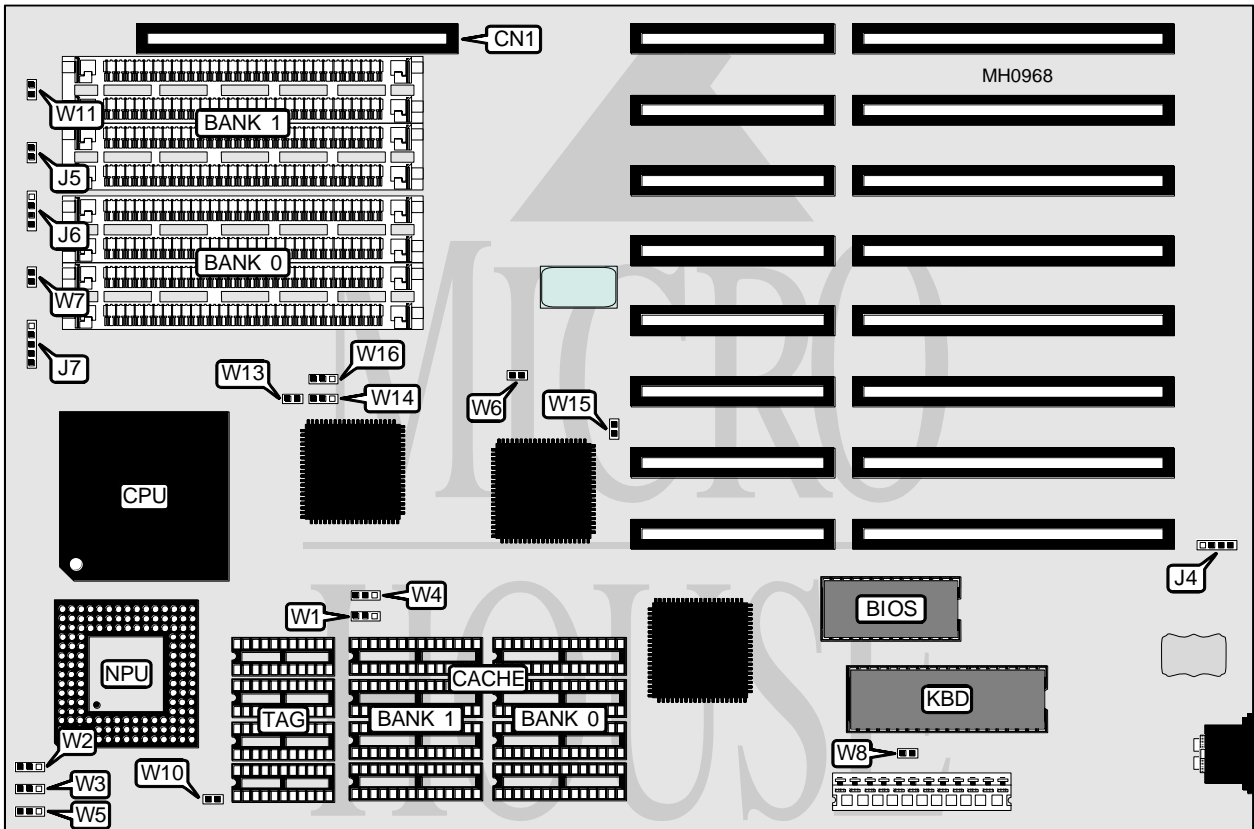


SPRITE, INC.

SM 486-66U

Processor	80486SX/80486DX/80486DX2
Processor Speed	25/33/50(internal)/50/66(internal)MHz
Chip Set	UMC
Max. Onboard DRAM	32MB
Cache	128/256KB
BIOS	AMI
Dimensions	330mm x 218mm
I/O Options	32-bit external memory card slot
NPU Options	4167



CONNECTIONS			
Purpose	Location	Purpose	Location
32-bit external memory card	CN1	Power LED & keylock	J7
External battery	J4	Reset switch	W7
Turbo switch	J5	Turbo LED	W11
Speaker	J6		

Continued on next page . . .

SPRITE, INC.
SM 486-66U

... continued from previous page

USER CONFIGURABLE SETTINGS		
Function	Jumper	Position
í Factory configured - do not alter	W6	Closed
í Monitor type select color	W8	Open
Monitor type select monochrome	W8	Closed
í Factory configured - do not alter	W10	Open
í Factory configured - do not alter	W13	Closed
í Factory configured - do not alter	W14	pins 1 & 2 closed
í Factory configured - do not alter	W15	Open
í Factory configured - do not alter	W16	pins 1 & 2 closed
í Factory configured - do not alter	W18	Open
Note: Jumper W18 may not appear on all board revisions.		

DRAM CONFIGURATION		
Size	Bank 0	Bank 1
1MB	(4) 256K x 9	NONE
2MB	(4) 256K x 9	(4) 256K x 9
4MB	(4) 1M x 9	NONE
5MB	(4) 256K x 9	(4) 1M x 9
8MB	(4) 1M x 9	(4) 1M x 9
16MB	(4) 4M x 9	NONE
17MB	(4) 256K x 9	(4) 4M x 9
20MB	(4) 1M x 9	(4) 4M x 9
32MB	(4) 4M x 9	(4) 4M x 9

CACHE CONFIGURATION			
Size	Bank 0	Bank 1	TAG
128KB	(4) 32K x 8	NONE	(4) 16K x 4
256KB	(4) 32K x 8	(4) 32K x 8	(4) 16K x 4

CACHE JUMPER CONFIGURATION					
Size	W1	W2	W3	W4	W5
128KB	1 & 2	1 & 2	2 & 3	2 & 3	2 & 3
256KB	2 & 3	2 & 3	2 & 3	1 & 2	2 & 3
Note: Pins designated should be in the closed position.					