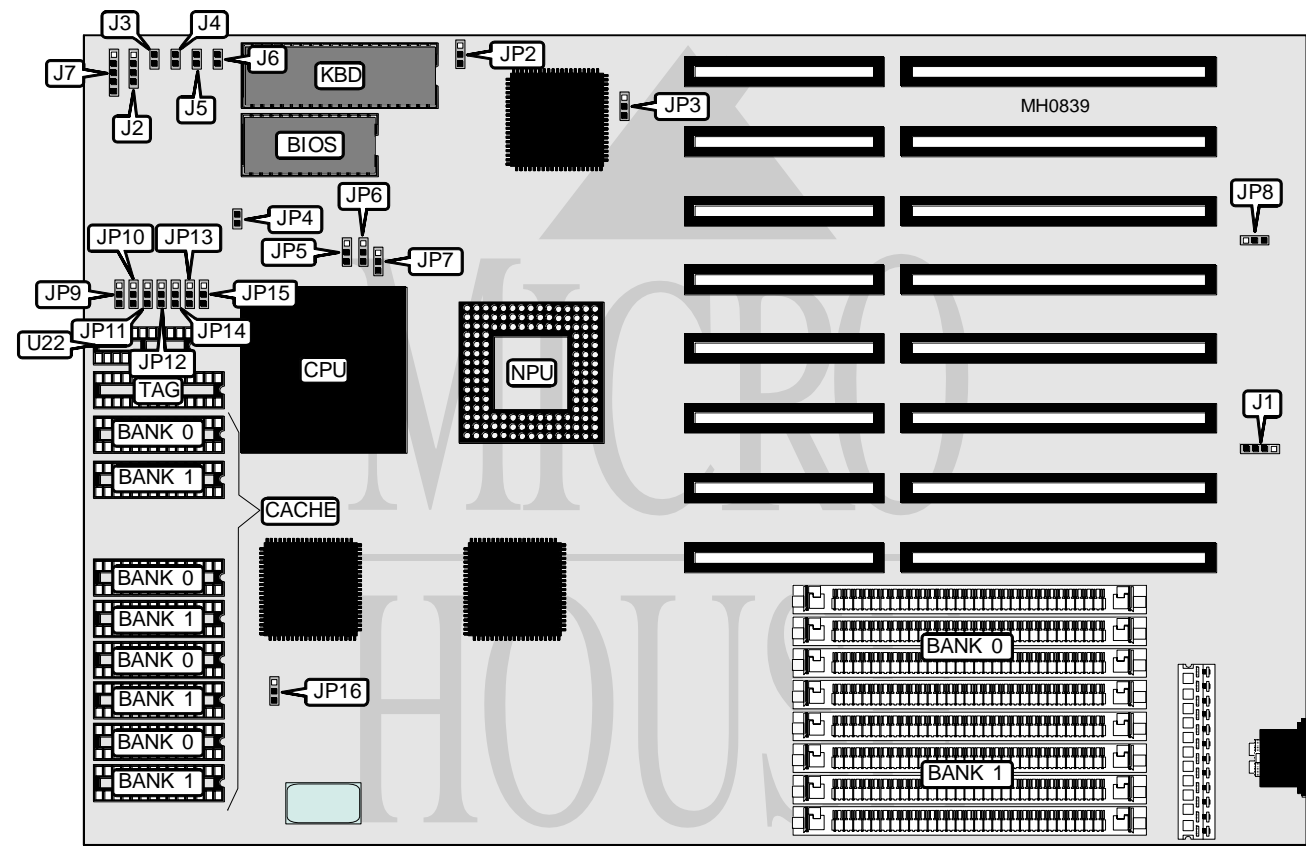


CAF TECHNOLOGY, INC.
C426 486DX-33 50/N426 486SX-20 25

Processor	80486SX/80486DX
Processor Speed	20/25/33/50MHz
Chip Set	SIS
Max. Onboard DRAM	32MB
Cache	64/128/256KB
BIOS	AMI
Dimensions	330mm x 218mm
I/O Options	None
NPU Options	4167



CONNECTIONS			
Purpose	Location	Purpose	Location
External battery	J1	Turbo LED	J4
Speaker	J2	Turbo switch	J5
Reset switch	J3	Power LED & keylock	J7

Continued on next page . . .

CAF TECHNOLOGY, INC.

C426 486DX-33 50/N426 486SX-20 25

... continued from previous page

USER CONFIGURABLE SETTINGS		
Function	Jumper	Position
í Keyboard clock select fixed at 7.159MHz	JP2	pins 2 & 3 closed
Keyboard clock select programmable via BIOS setup	JP2	pins 1 & 2 closed
í CMOS memory normal operation	JP3	pins 1 & 2 closed
CMOS memory clear	JP3	pins 2 & 3 closed
í Monitor type select color	J6	Closed
Monitor type select monochrome	J6	Open
í Power good signal detect from board	JP8	pins 1 & 2 closed
Power good signal detect from power supply	JP8	pins 2 & 3 closed
í CPU clock speed select $\geq 25\text{MHz}$	JP16	pins 1 & 2 closed
CPU clock speed select $< 25\text{Mz}$	JP16	pins 2 & 3 closed

DRAM CONFIGURATION		
Size	Bank 0	Bank 1
1MB	(4) 256K x 9	NONE
2MB	(4) 256K x 9	(4) 256K x 9
4MB	(4) 1M x 9	NONE
8MB	(4) 1M x 9	(4) 1M x 9
16MB	(4) 4M x 9	NONE
32MB	(4) 4M x 9	(4) 4M x 9

CACHE CONFIGURATION				
Size	Bank 0	Bank 1	TAG	Dirty bit U22
64KB	(4) 8K x 8	(4) 8K x 8	(1) 8K x 8	(1) 16K x 4
128KB	(4) 32K x 8	NONE	(1) 8K x 8	(1) 16K x 4
256KB	(4) 32K x 8	(4) 32K x 8	(1) 32K x 8	(1) 16K x 4

CACHE JUMPER CONFIGURATION							
Size	JP9	JP10	JP11	JP12	JP13	JP14	JP15
64KB	1 & 2	2 & 3	1 & 2	1 & 2	1 & 2	1 & 2	1 & 2
128KB	2 & 3	1 & 2	1 & 2	2 & 3	1 & 2	2 & 3	1 & 2
256KB	2 & 3	2 & 3	2 & 3	2 & 3	2 & 3	2 & 3	2 & 3
Note: Pins designated should be in the closed position.							

CPU TYPE CONFIGURATION			
Type	JP5	JP6	JP7
80486SX	pins 2 & 3 closed	pins 2 & 3 closed	Open
80487SX	pins 1 & 2 closed	pins 2 & 3 closed	Closed
80486DX	pins 1 & 2 closed	pins 1 & 2 closed	Closed