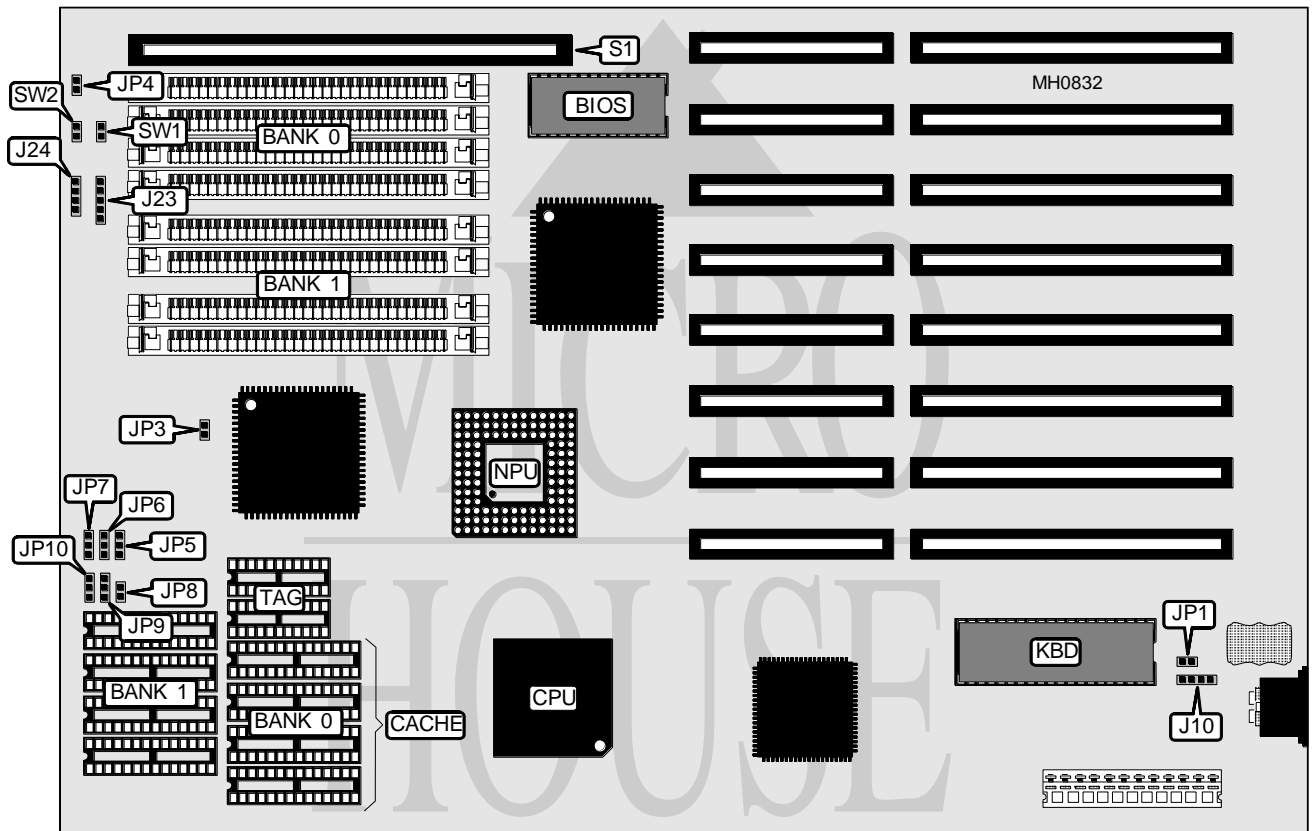


UNITRON COMPUTER, INC.

80386DX - 33/40

Processor	80386DX
Processor Speed	33/40MHz
Chip Set	OPTI
Max. Onboard DRAM	32MB
Cache	32/64/128/256KB
BIOS	Phoenix
Dimensions	330mm x 218mm
I/O Options	32-bit external memory card slot
NPU Options	80387/3167



CONNECTIONS			
Purpose	Location	Purpose	Location
External battery	J10	32-bit external memory card	S1
Power LED & keylock	J23	Reset switch	SW1
Speaker	J24	Turbo switch	SW2
Turbo LED	JP4		

Continued on next page . . .

UNITRON COMPUTER, INC.

80386DX-33/40

... continued from previous page

USER CONFIGURABLE SETTINGS		
Function	Jumper	Position
í Monitor type select color	JP1	Closed
Monitor type select monochrome	JP1	Open
í CMOS memory normal operation	JP2	pins 2 & 3 closed
CMOS memory clear	JP2	pins 1 & 2 closed
í I/O Bus speed select CPUCLK/6	JP3	Open
I/O Bus speed select CPUCLK/8	JP3	Closed
í CPU speed select forced low	SW2	Closed
CPU speed select switchable at keyboard	SW2	Open
Note: The location of JP2 is unidentified.		

DRAM CONFIGURATION		
Size	Bank 0	Bank 1
1MB	(4) 256K x 9	NONE
2MB	(4) 256K x 9	(4) 256K x 9
4MB	(4) 1M x 9	NONE
5MB	(4) 1M x 9	(4) 256K x 9
8MB	(4) 1M x 9	(4) 1M x 9
16MB	(4) 4M x 9	NONE
20MB	(4) 4M x 9	(4) 1M x 9
32MB	(4) 4M x 9	(4) 4M x 9

CACHE CONFIGURATION			
Size	Bank 0	Bank 1	TAG
32KB	(4) 8K x 8	NONE	(2) 16K x 4
64KB	(4) 8K x 8	(4) 8K x 8	(2) 16K x 4
128KB	(4) 32K x 8	NONE	(2) 16K x 4
256KB	(4) 32K x 8	(4) 32K x 8	(2) 16K x 4

CACHE JUMPER CONFIGURATION						
Size	JP5	JP6	JP7	JP8	JP9	JP10
32KB	1 & 2	1 & 2	1 & 2	Open	2 & 3	2 & 3
64KB	2 & 3	1 & 2	1 & 2	Open	2 & 3	1 & 2
128KB	2 & 3	1 & 2	2 & 3	Closed	2 & 3	1 & 2
256KB	2 & 3	2 & 3	2 & 3	Closed	1 & 2	1 & 2
Note: Pins designated should be in the closed position.						