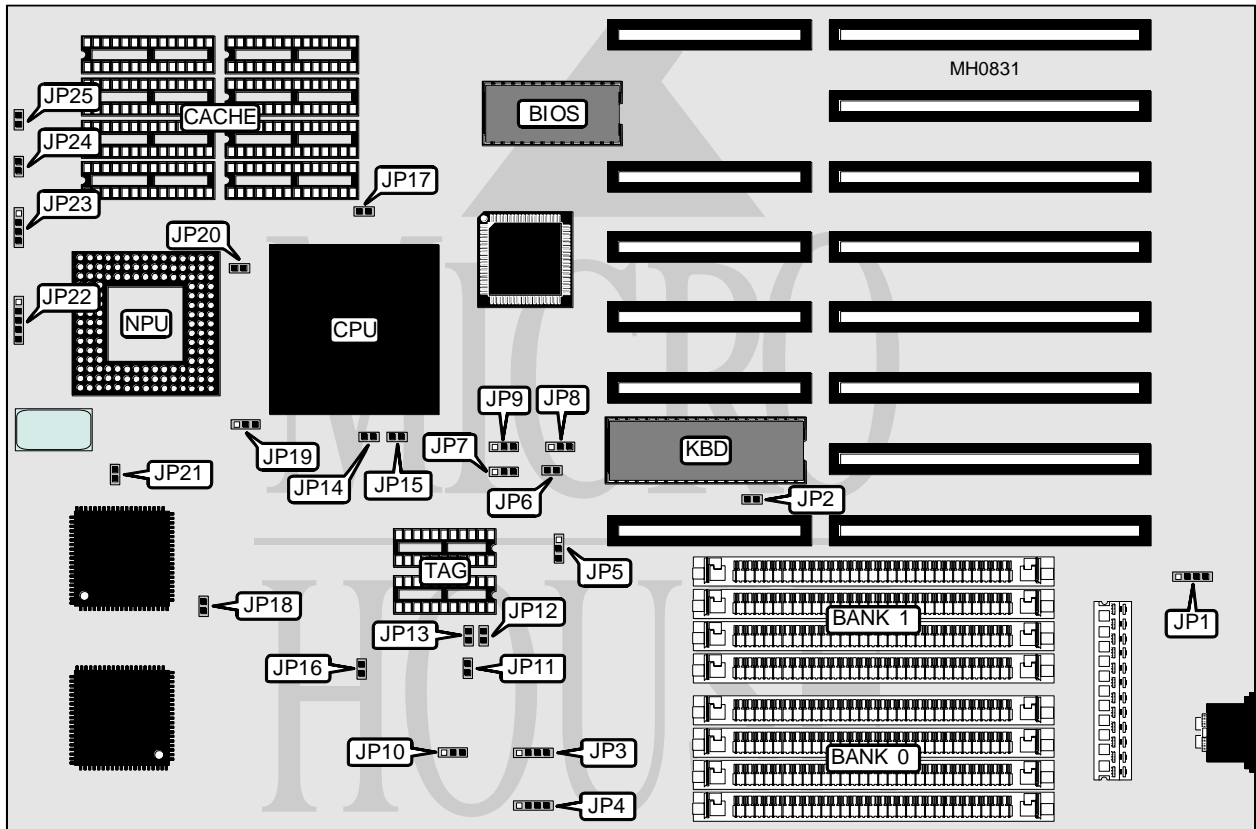


# GCH SYSTEMS, INC.

## 33MHZ 80486 BABY AT (REV. B)

<b>Processor</b>	80486DX
<b>Processor Speed</b>	33MHz
<b>Chip Set</b>	ESEQ
<b>Max. Onboard DRAM</b>	32MB
<b>Cache</b>	64/256KB
<b>BIOS</b>	AMI
<b>Dimensions</b>	330mm x 218mm
<b>I/O Options</b>	None
<b>NPU Options</b>	4167



CONNECTIONS			
Purpose	Location	Purpose	Location
External battery	JP1	Reset switch	JP24
Power LED & keylock	JP22	Turbo LED	JP25
Speaker	JP23		

Continued on next page . . .

## GCH SYSTEMS, INC.

## 33MHZ 80486 BABY AT (REV. B)

... continued from previous page

USER CONFIGURABLE SETTINGS		
Function	Jumper	Position
í Monitor type select color	JP2	Closed
Monitor type select monochrome	JP2	Open
í Factory configured - do not alter	JP3	pins 1 & 2, 3 & 4 closed
í Factory configured - do not alter	JP4	pins 1 & 2, 3 & 4 closed
í Factory configured - do not alter	JP5	pins 2 & 3 closed
í Factory configured - do not alter	JP6	Closed
í Factory configured - do not alter	JP7	pins 1 & 2 closed
í Factory configured - do not alter	JP10	pins 1 & 2 closed
í Factory configured - do not alter	JP11	Closed
í Factory configured - do not alter	JP12	Closed
í Factory configured - do not alter	JP13	Closed
í Factory configured - do not alter	JP16	Closed
í Factory configured - do not alter	JP18	Closed
í Factory configured - do not alter	JP19	pins 1 & 2 closed
í CPU speed select iOSC/2	JP21	Closed
CPU speed select iOSC/1	JP21	Open
í NPU disabled	JP20	Open
NPU enabled	JP20	Closed

DRAM CONFIGURATION		
Size	Bank 0	Bank 1
1MB	(4) 256K x 9	NONE
2MB	(4) 256K x 9	(4) 256K x 9
4MB	(4) 1M x 9	NONE
5MB	(4) 1M x 9	(4) 256K x 9
8MB	(4) 1M x 9	(4) 1M x 9
16MB	(4) 4M x 9	NONE
17MB	(4) 4M x 9	(4) 256K x 9
20MB	(4) 4M x 9	(4) 1M x 9
32MB	(4) 4M x 9	(4) 4M x 9

CACHE CONFIGURATION		
Size	Bank 0	TAG
64KB	(8) 8K x 8	(2) 16K x 4
256KB	(8) 32K x 8	(2) 16K x 4

CACHE JUMPER CONFIGURATION					
Size	JP8	JP9	JP14	JP15	JP17
64KB	2 & 3	2 & 3	Open	Open	Open
256KB	1 & 2	1 & 2	Closed	Closed	Closed

Note: Pins designated should be in the closed position.