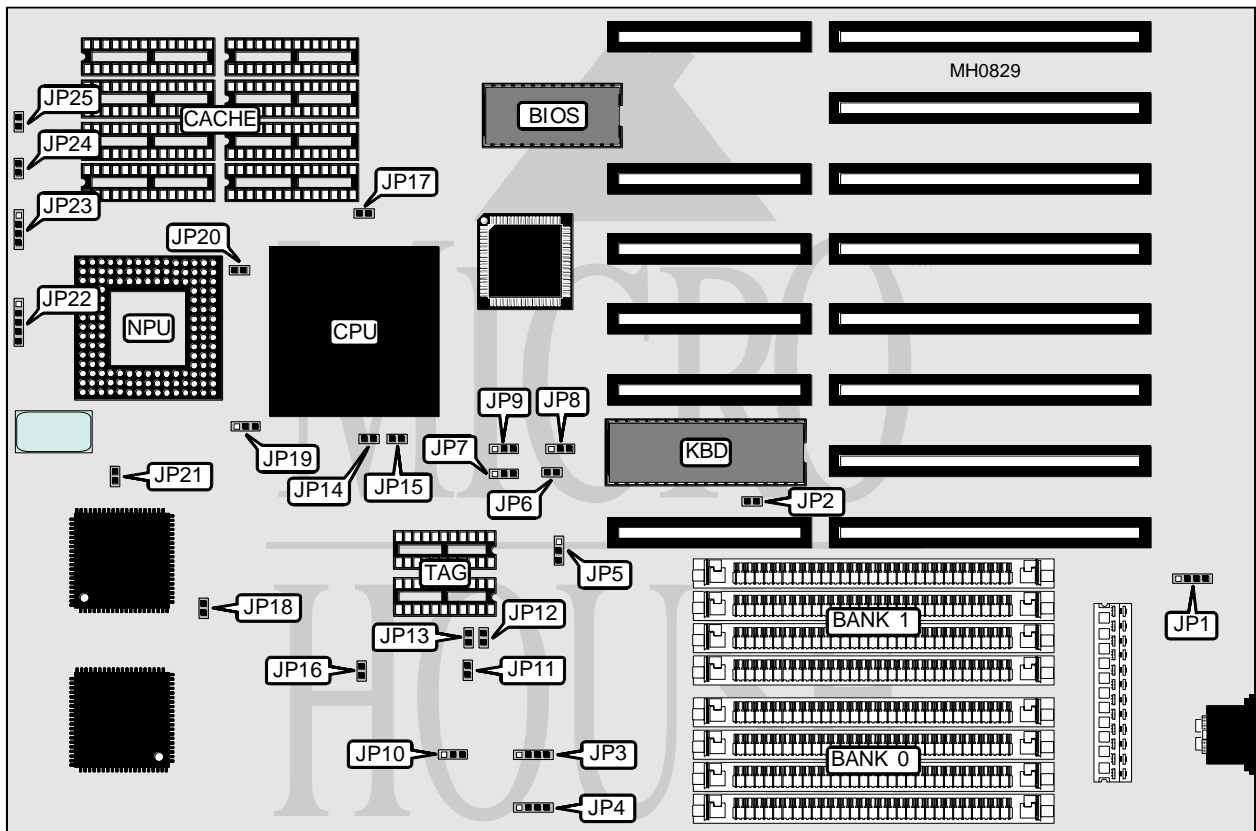


GCH SYSTEMS, INC.

33MHZ 80486 BABY AT (REV. A)

Processor	80486DX
Processor Speed	33MHz
Chip Set	ETEQ
Max. Onboard DRAM	32MB
Cache	64/256KB
BIOS	AMI
Dimensions	330mm x 218mm
I/O Options	None
NPU Options	4167



CONNECTIONS			
Purpose	Location	Purpose	Location
External battery	JP1	Reset switch	JP24
Power LED & keylock	JP22	Turbo LED	JP25
Speaker	JP23		

Continued on next page . . .

GCH SYSTEMS, INC.

33MHZ 80486 BABY AT (REV. A)

... continued from previous page

USER CONFIGURABLE SETTINGS		
Function	Jumper	Position
í Monitor type select color	JP2	Closed
Monitor type select monochrome	JP2	Open
í Factory configured - do not alter	JP3	Open
í Factory configured - do not alter	JP4	Open
í Factory configured - do not alter	JP5	pins 1 & 2 closed
í Factory configured - do not alter	JP6	Open
í Factory configured - do not alter	JP7	pins 2 & 3 closed
í Factory configured - do not alter	JP10	pins 2 & 3 closed
í Factory configured - do not alter	JP11	Open
í Factory configured - do not alter	JP12	Open
í Factory configured - do not alter	JP13	Open
í Factory configured - do not alter	JP16	Open
í Factory configured - do not alter	JP18	Open
í Factory configured - do not alter	JP19	pins 2 & 3 closed
í Factory configured - do not alter	JP21	Closed
í NPU disabled	JP20	Open
NPU enabled	JP20	Closed

DRAM CONFIGURATION		
Size	Bank 0	Bank 1
1MB	(4) 256K x 9	NONE
2MB	(4) 256K x 9	(4) 256K x 9
4MB	(4) 1M x 9	NONE
5MB	(4) 1M x 9	(4) 256K x 9
8MB	(4) 1M x 9	(4) 1M x 9
16MB	(4) 4M x 9	NONE
17MB	(4) 4M x 9	(4) 256K x 9
20MB	(4) 4M x 9	(4) 1M x 9
32MB	(4) 4M x 9	(4) 4M x 9

CACHE CONFIGURATION		
Size	Bank 0	TAG
64KB	(8) 8K x 8	(2) 16K x 4
256KB	(8) 32K x 8	(2) 16K x 4

CACHE JUMPER CONFIGURATION					
Size	JP8	JP9	JP14	JP15	JP17
64KB	2 & 3	2 & 3	Open	Open	Open
256KB	1 & 2	1 & 2	Closed	Closed	Closed

Note: Pins designated should be in the closed position.