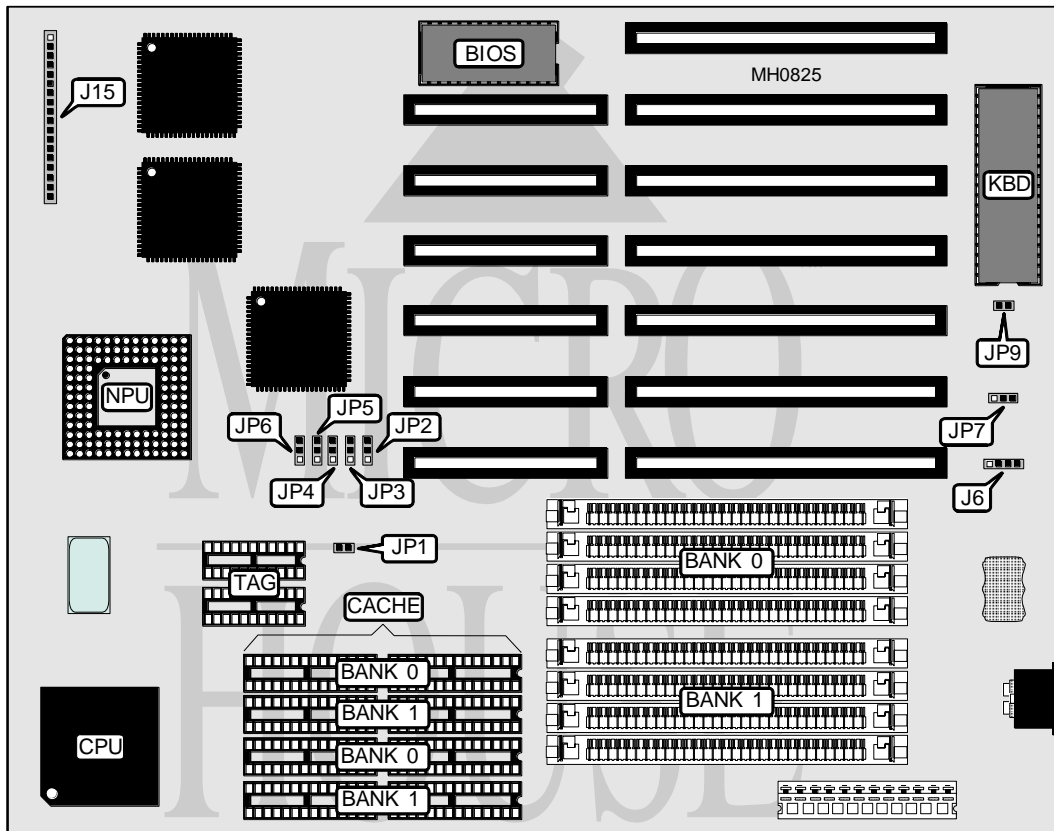


BIOSTAR MICROTECH INTERNATIONAL CORPORATION
MB-1333PMB-CH/1340PMB-CH
MB-1333PME-CH/1340PME-CH (REV. A, B & E)

Processor 80386DX
Processor Speed 33/40MHz
Chip Set VLSI
Max. Onboard DRAM 32MB
Cache 32/64/128/256KB
BIOS AMI
Dimensions 330mm x 218mm
I/O Options None
NPU Options 80387/3167



CONNECTIONS			
Purpose	Location	Purpose	Location
External battery	J6	Reset switch	J15 pins 12-13
Speaker	J15 pins 1-4	Turbo switch	J15 pins 14-16
Keylock	J15 pins 5-9	Power LED	J15 pins 17-18
Turbo LED	J15 pins 10-11		

Continued on next page . . .

BIOSTAR MICROTECH INTERNATIONAL CORPORATION**MB-1333PMB-CH/1340PMB-CH****MB-1333PME-CH/1340PME-CH (REV. A, B & E)**

... continued from previous page

USER CONFIGURABLE SETTINGS

Function	Jumper	Position
í CMOS memory normal operation	JP7	pins 2 & 3 closed
CMOS memory clear	JP7	pins 1 & 2 closed
í Monitor type select color	JP9	Closed
Monitor type select monochrome	JP9	Open

DRAM CONFIGURATION

Size	Bank 0	Bank 1
1MB	(4) 256K x 9	NONE
2MB	(4) 256K x 9	(4) 256K x 9
4MB	(4) 1M x 9	NONE
5MB	(4) 256K x 9	(4) 1M x 9
8MB	(4) 1M x 9	(4) 1M x 9
16MB	(4) 4M x 9	NONE
20MB	(4) 1M x 9	(4) 4M x 9
32MB	(4) 4M x 9	(4) 4M x 9

CACHE CONFIGURATION

Size	Bank 0	Bank 1	TAG
32KB	(4) 8K x 8	NONE	(2) 16K x 4
64KB	(4) 8K x 8	(4) 8K x 8	(2) 16K x 4
128KB	(4) 32K x 8	NONE	(2) 16K x 4
256KB	(4) 32K x 8	(4) 32K x 8	(2) 16K x 4

CACHE JUMPER CONFIGURATION

Size	JP1	JP2	JP3	JP4	JP5	JP6
32KB	Open	1 & 2	2 & 3	2 & 3	1 & 2	1 & 2
64KB	Open	2 & 3	1 & 2	2 & 3	1 & 2	1 & 2
128KB	Closed	2 & 3	1 & 2	2 & 3	2 & 3	1 & 2
256KB	Closed	2 & 3	1 & 2	1 & 2	2 & 3	2 & 3

Note: Pins designated should be in the closed position.