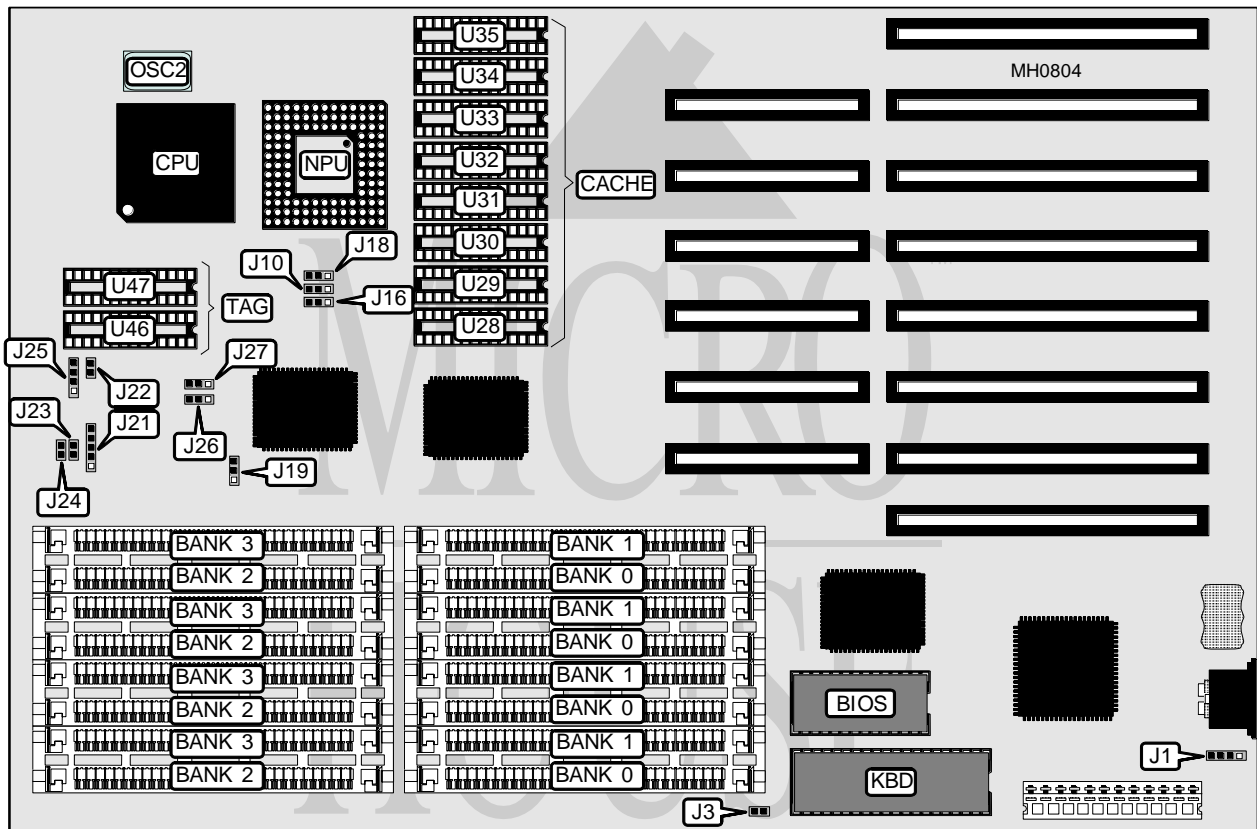


GVC TECHNOLOGIES, INC.

386-40

Processor	80386DX
Processor Speed	40MHz
Chip Set	SIS
Max. Onboard DRAM	64MB
Cache	32/64/128/256KB
BIOS	AMI
Dimensions	330mm x 218mm
I/O Options	None
NPU Options	80387/3167



CONNECTIONS			
Purpose	Location	Purpose	Location
External battery	J1	Turbo switch	J24
Power LED & keylock	J21	Speaker	J25
Turbo LED	J23	Reset switch	J22

Continued on next page . . .

GVC TECHNOLOGIES, INC.

386-40

... continued from previous page

USER CONFIGURABLE SETTINGS		
Function	Jumper	Position
í Factory configured - do not alter	J2	pins 2 & 3 closed
í Monitor type select monochrome	J3	Open
Monitor type select color	J3	Closed
í Factory configured - do not alter	J15	pins 1 & 2 closed
í NPU mode select synchronous with CPU	J16	pins 1 & 2 closed
NPU mode select synchronous with OSC2/2	J16	pins 2 & 3 closed
í Fast gate A20 select normal	J19	pins 1 & 2 closed
Fast gate A20 select fast	J19	pins 2 & 3 closed
Note: The locations of J2 & J15 are unidentified.		

DRAM CONFIGURATION				
Size	Bank 0	Bank 1	Bank 2	Bank 3
1MB	(4) 256K x 9	NONE	NONE	NONE
2MB	(4) 256K x 9	(4) 256K x 9	NONE	NONE
4MB	(4) 1M x 9	NONE	NONE	NONE
5MB	(4) 256K x 9	(4) 1M x 9	NONE	NONE
6MB	(4) 256K x 9	(4) 256K x 9	(4) 1M x 9	NONE
8MB	(4) 1M x 9	(4) 1M x 9	NONE	NONE
9MB	(4) 256K x 9	(4) 1M x 9	(4) 1M x 9	NONE
10MB	(4) 256K x 9	(4) 256K x 9	(4) 1M x 9	(4) 1M x 9
12MB	(4) 1M x 9	(4) 1M x 9	(4) 1M x 9	NONE
16MB	(4) 1M x 9	(4) 1M x 9	(4) 1M x 9	(4) 1M x 9
16MB	(4) 4M x 9	NONE	NONE	NONE
20MB	(4) 1M x 9	(4) 4M x 9	NONE	NONE
24MB	(4) 1M x 9	(4) 1M x 9	(4) 4M x 9	NONE
32MB	(4) 4M x 9	(4) 4M x 9	NONE	NONE
48MB	(4) 4M x 9	(4) 4M x 9	(4) 4M x 9	NONE
64MB	(4) 4M x 9	(4) 4M x 9	(4) 4M x 9	(4) 4M x 9

CACHE CONFIGURATION				
Size	Bank 0	Bank 1	TAG (U46)	TAG (U46)
32KB	(4) 8K x 8	NONE	(1) 8K x 8	NONE
64KB	(4) 8K x 8	(4) 8K x 8	(1) 8K x 8	(1) 8K x 8
128KB	(4) 32K x 8	NONE	(1) 32K x 8	NONE
256KB	(4) 32K x 8	(4) 32K x 8	(1) 32K x 8	(1) 32K x 8
Note: Bank 0 = U28, U30, U32 & U34.				

CACHE JUMPER CONFIGURATION				
Size	J10	J18	J26	J27
32KB	pins 1 & 2 closed	pins 1 & 2 closed	pins 1 & 2 closed	pins 1 & 2 closed
64KB	pins 2 & 3 closed	pins 1 & 2 closed	pins 2 & 3 closed	pins 1 & 2 closed
128KB	pins 2 & 3 closed	pins 1 & 2 closed	pins 2 & 3 closed	pins 1 & 2 closed
256KB	pins 2 & 3 closed	pins 2 & 3 closed	pins 2 & 3 closed	pins 2 & 3 closed