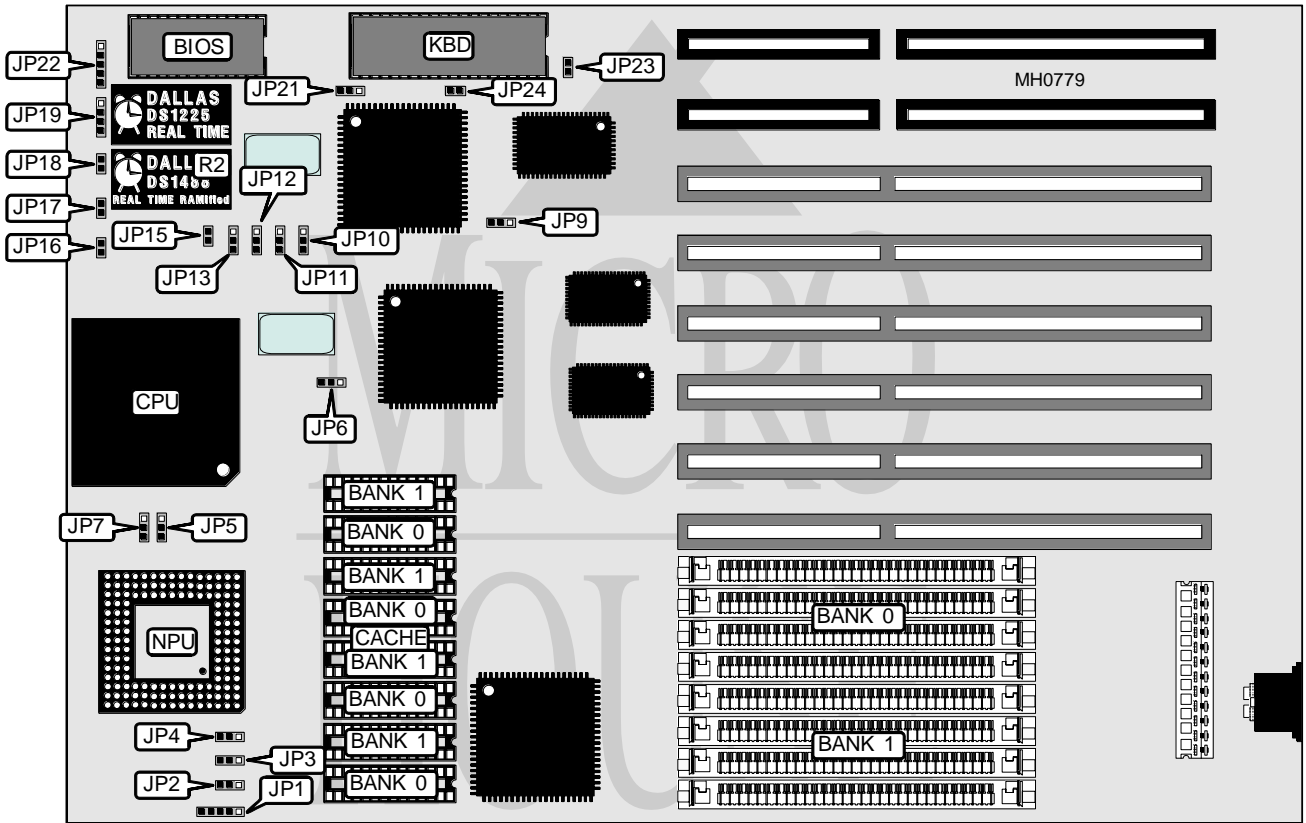


LION COMPUTERS, INC. NICE EISA 486 DX/DX2/SX-50

Processor	80486SX/80486DX/80486DX2
Processor Speed	16/20/25/33/50(internal)/50/66(internal)MHz
Chip Set	SIS
Max. Onboard DRAM	128MB
Cache	64/128/256KB
BIOS	AMI/Phoenix
Dimensions	330mm x 218mm
I/O Options	None
NPU Options	4167



CONNECTIONS			
Purpose	Location	Purpose	Location
Turbo LED	JP16	Speaker	JP19
Turbo switch	JP17	Power LED & keylock	JP22
Reset switch	JP18		

Continued on next page . . .

LION COMPUTERS, INC.

NICE EISA 486 DX/DX2/SX-50

... continued from previous page

USER CONFIGURABLE SETTINGS		
Function	Jumper	Position
í Factory configured - do not alter	JP6	pins 2 & 3 closed
í Factory configured - do not alter	JP9	pins 1 & 2 closed
í Factory configured - do not alter	JP21	pins 1 & 2 closed
í Factory configured - do not alter	JP23	Closed
í Monitor type select color	JP24	Open
Monitor type select monochrome	JP24	Closed

DRAM CONFIGURATION		
Size	Bank 0	Bank 1
1MB	(4) 256K x 9	NONE
2MB	(4) 256K x 9	(4) 256K x 9
4MB	(4) 1M x 9	NONE
5MB	(4) 256K x 9	(4) 1M x 9
8MB	(4) 1M x 9	(4) 1M x 9
16MB	(4) 4M x 9	NONE
17MB	(4) 256K x 9	(4) 4M x 9
20MB	(4) 1M x 9	(4) 4M x 9
32MB	(4) 4M x 9	(4) 4M x 9
64MB	(4) 16M x 9	NONE
65MB	(4) 256K x 9	(4) 16M x 9
68MB	(4) 1M x 9	(4) 16M x 9
80MB	(4) 4M x 9	(4) 16M x 9
128MB	(4) 16M x 9	(4) 16M x 9

CACHE CONFIGURATION		
Size	Bank 0	Bank 1
64KB	(4) 8K x 8	(4) 8K x 8
128KB	(4) 32K x 8	NONE
256KB	(4) 32K x 8	(4) 32K x 8

CACHE JUMPER CONFIGURATION						
Size	JP1	JP2	JP3	JP4	JP12	JP13
64KB	2 & 3	1 & 2	1 & 2	1 & 2	1 & 2	1 & 2
128KB	1 & 2	2 & 3	1 & 2	2 & 3	1 & 2	2 & 3
256KB	4 & 5	2 & 3	2 & 3	2 & 3	2 & 3	2 & 3

Note: Pins designated should be in the closed position.

CPU TYPE CONFIGURATION			
Type	JP5	JP7	JP15
80486SX	Open	pins 2 & 3 closed	Open
80487SX	pins 2 & 3 closed	pins 1 & 2 closed	Closed
80486DX	pins 1 & 2 closed	pins 1 & 2 closed	Closed

Continued on next page ...

LION COMPUTERS, INC.
NICE EISA 486 DX/DX2/SX-50

... continued from previous page

BATTERY CONFIGURATION		
Type	JP10	JP11
DS1287	pins 1 & 2 closed	pins 1 & 2 closed
DS1488	pins 2 & 3 closed	pins 2 & 3 closed