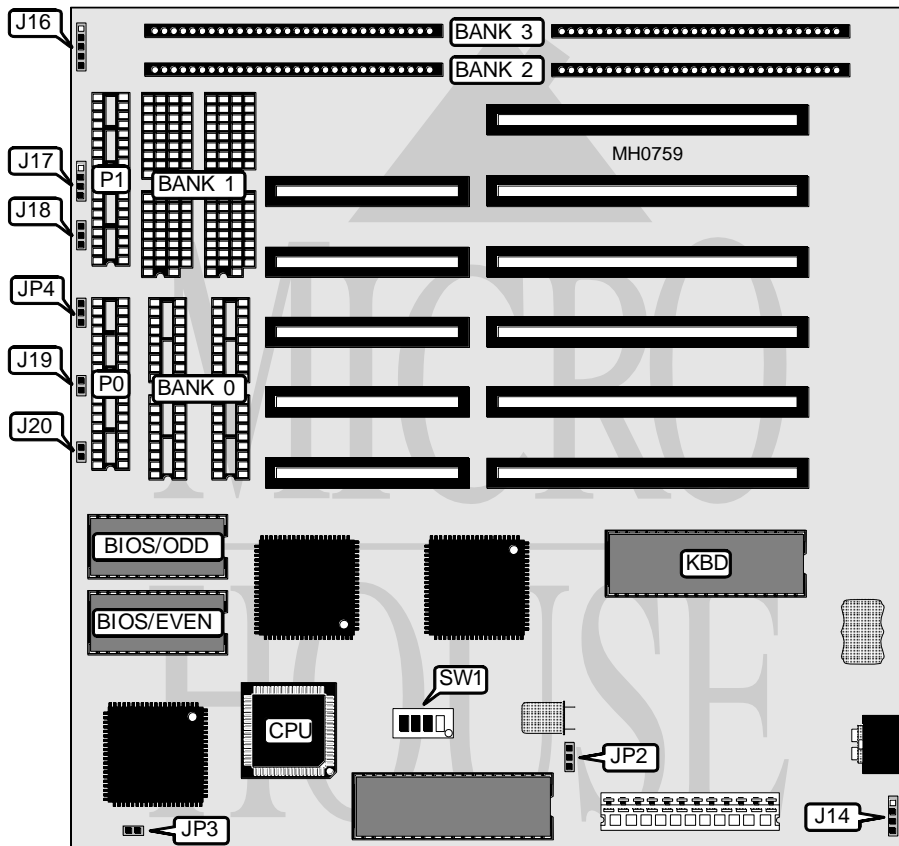


# UNIDENTIFIED HT101A 286

**Processor** 80286  
**Processor Speed** 10/12MHz  
**Chip Set** Unknown  
**Max. Onboard DRAM** 4MB  
**Cache** None  
**BIOS** AMI  
**Dimensions** 220mm x 220mm  
**I/O Options** None  
**NPU Options** 80287



CONNECTIONS			
Purpose	Location	Purpose	Location
Turbo switch	J4	Speaker	J17
External battery	J14	Turbo LED	J19
Power LED & keylock	J16	Reset switch	J20

Continued on next page . . .

# UNIDENTIFIED

## HT101A 286

... continued from previous page

USER CONFIGURABLE SETTINGS		
Function	Jumper/Switch	Position
í NPU mode select synchronous with CPU	JP2	pins 2 & 3 closed
NPU mode select asynchronous with CPU	JP2	pins 1 & 2 closed
í Parity check enabled	JP3	Closed
Parity check disabled	JP3	Open
í CPU speed select [CTRL][ALT][+] = fast, [CTRL][ALT][-] = slow	JP4	pins 1 & 2 closed
CPU speed select fast	JP4	pins 2 & 3 closed
í DRAM select 0 wait states	J18	pins 2 & 3 closed
DRAM select 1 wait state	J18	Open
DRAM wait state select [CTRL][ALT][0] = 0 [CTRL][ALT][1] = 1	J18	pins 1 & 2 closed
í Monitor type select color	SW1/1	On
Monitor type select monochrome	SW1/1	Off

DRAM CONFIGURATION						
Size	Bank 0	P-0	Bank 1	P-1	Bank 2	Bank 3
512KB	(4) 44256	(2) 41256	NONE	NONE	NONE	NONE
640KB	(4) 44256	(2) 41256	(4) 4464	(2) 4164	NONE	NONE
1MB	(4) 44256	(2) 41256	(4) 44256	(2) 41256	NONE	NONE
2MB	NONE	NONE	NONE	NONE	(2) 1M x 9	NONE
4MB	NONE	NONE	NONE	NONE	(2) 1M x 9	(2) 1M x 9

DRAM SWITCH CONFIGURATION			
Size	SW1/2	SW1/3	SW1/4
512KB	On	On	Off
640KB	On	Off	On
1MB	On	Off	Off
2MB	Off	Off	On
4MB	Off	Off	Off