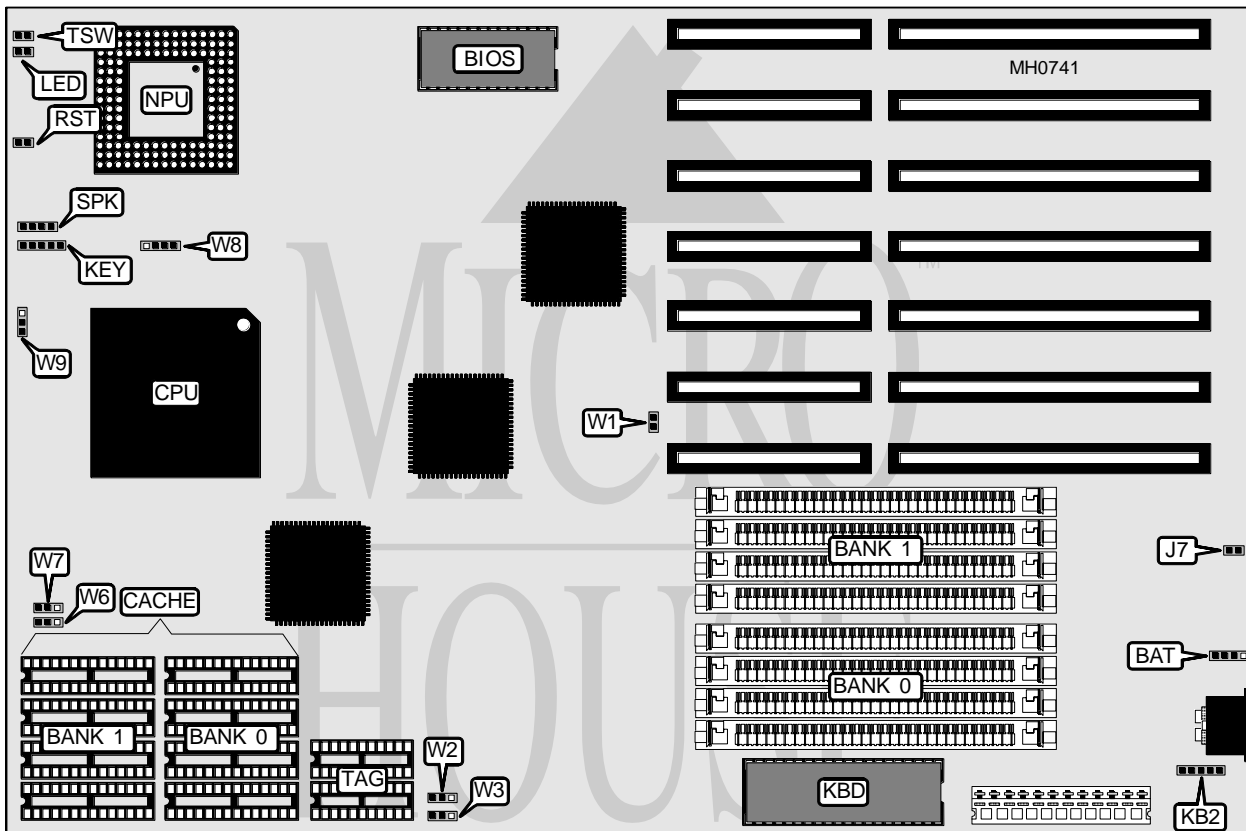


CACHE COMPUTERS, INC.

CACHE 486 MINI (MODEL 348)

Processor	80486SX/80487SX/80486DX/80486DX2
Processor Speed	25/33/50(internal)/66(internal)MHz
Chip Set	OPTI
Max. Onboard DRAM	32MB
Cache	64/128/256KB
BIOS	AMI
Dimensions	330mm x 218mm
I/O Options	Auxiliary keyboard connector
NPU Options	4167



CONNECTIONS			
Purpose	Location	Purpose	Location
External battery	BAT	Reset switch	RST
Power LED & keylock	KEY	Speaker	SPK
Auxiliary keyboard	KB2	Turbo switch	TSW
Turbo LED	LED		

Continued on next page . . .

CACHE COMPUTERS, INC.

CACHE 486 MINI (MODEL 348)

... continued from previous page

USER CONFIGURABLE SETTINGS		
Function	Jumper	Position
í Monitor type select color	J7	Closed
Monitor type select monochrome	J7	Open
í CMOS memory normal operation	W1	Open
CMOS memory clear	W1	Closed

DRAM CONFIGURATION		
Size	Bank 0	Bank 1
1MB	(4) 256K x 9	NONE
2MB	(4) 256K x 9	(4) 256K x 9
4MB	(4) 1M x 9	NONE
5MB	(4) 1M x 9	(4) 256K x 9
8MB	(4) 1M x 9	(4) 1M x 9
16MB	(4) 4M x 9	NONE
17MB	(4) 4M x 9	(4) 256K x 9
20MB	(4) 4M x 9	(4) 1M x 9
32MB	(4) 4M x 9	(4) 4M x 9

CACHE CONFIGURATION			
Size	Bank 0	Bank 1	TAG
64KB	(4) 8K x 8	(4) 8K x 8	(2) 16K x 4
128KB	(4) 32K x 8	NONE	(2) 16K x 4
256KB	(4) 32K x 8	(4) 32K x 8	(2) 16K x 4

CACHE JUMPER CONFIGURATION				
Size	W2	W3	W6	W7
64KB	pins 1 & 2 closed	pins 1 & 2 closed	pins 2 & 3 closed	pins 2 & 3 closed
128KB	pins 1 & 2 closed	pins 2 & 3 closed	pins 1 & 2 closed	pins 1 & 2 closed
256KB	pins 2 & 3 closed	pins 2 & 3 closed	pins 2 & 3 closed	pins 2 & 3 closed

CPU TYPE CONFIGURATION		
Type	W8	W9
80486SX	pins 2 & 3 closed	Open
80487SX	pins 1 & 2, 3 & 4 closed	pins 2 & 3 closed
80486DX	pins 1 & 2, 3 & 4 closed	pins 1 & 2 closed
80486DX2	pins 1 & 2, 3 & 4 closed	pins 1 & 2 closed