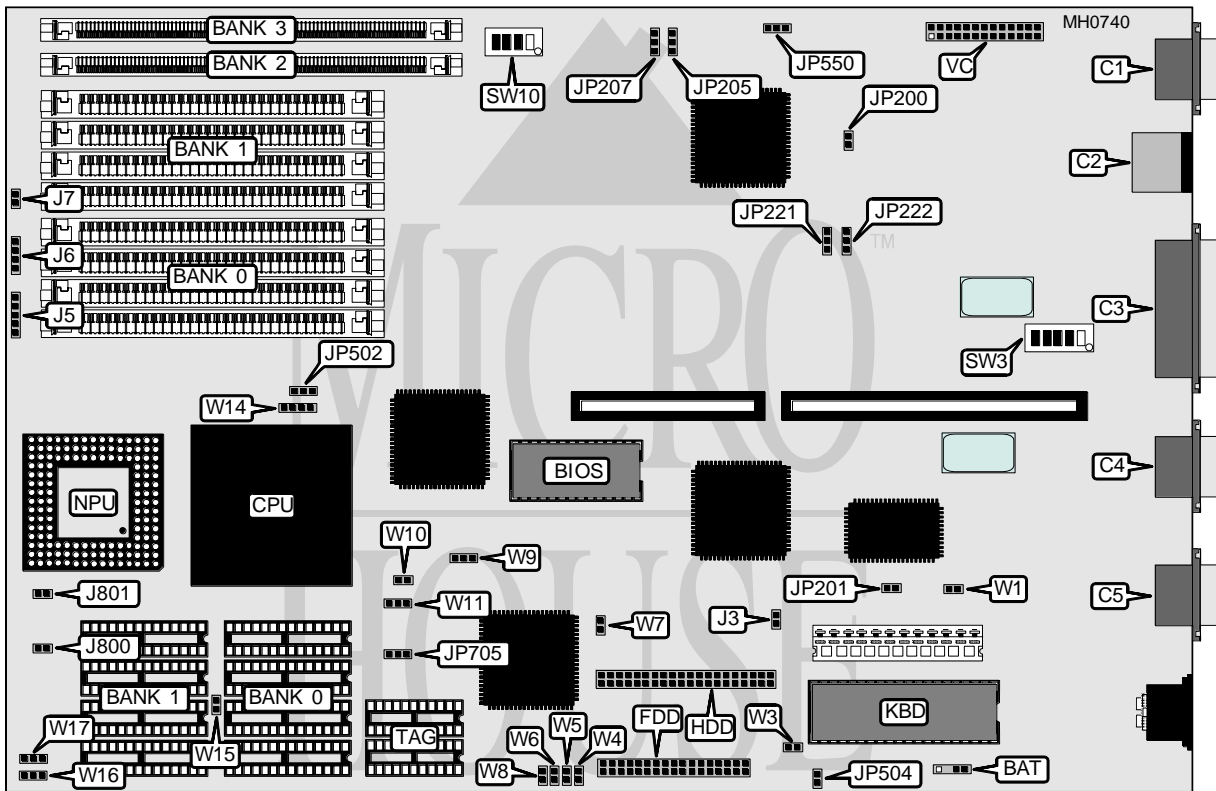


CACHE COMPUTERS, INC.

LYNX 486 WORKSTATION (MODEL 335)

Processor	80486SX/80487SX/80486DX
Processor Speed	33MHz
Chip Set	Unknown
Max. Onboard DRAM	64MB
Cache	64/128/256KB
BIOS	AMI
Dimensions	330mm x 218mm
I/O Options	Parallel port, IDE interface, serial ports (2). PS/2 bus mouse, floppy drive interface, VGA port, video option connector
NPU Options	4167



CONNECTIONS			
Purpose	Location	Purpose	Location
External battery	BAT	IDE interface LED	J3
VGA port	C1	Speaker	J5
PS/2 bus mouse	C2	Power LED & keylock	J6
Parallel port	C3	Reset switch	J7
Serial port 1	C4	Turbo switch	J800
Serial port 2	C5	Turbo LED	J801
Floppy drive interface	FDD	Video option	VC
IDE interface	HDD		

Continued on next page . . .

CACHE COMPUTERS, INC.

LYNX 486 WORKSTATION (MODEL 335)

... continued from previous page

USER CONFIGURABLE SETTINGS		
Function	Jumper/Switch	Position
í Floppy drive controller (on-board) select primary	W1	Open
Floppy drive controller (on-board) select secondary	W1	Closed
í Monitor type select monochrome	W3	Open
Monitor type select color	W3	Closed
í IDE controller (on-board) select primary	W4	Open
IDE controller (on-board) select secondary	W4	Closed
í Serial port 1 (C4) select COM1	W5	Open
Serial port 1 (C4) select COM3	W5	Closed
í Serial port 2 (C5) select COM2	W6	Open
Serial port 2 (C5) select COM4	W6	Closed
í Parallel port (C3) select LPT1	W8	Open
Parallel port (C3) select LPT2	W8	Closed
í Factory configured - do not alter	W10	N/A
í Cache enabled	W15	Open
Cache disabled	W15	Closed
í Color chip installed select Sierra	JP200	Open
Color chip installed select Music	JP200	Closed
í Mouse port/Floppy controller enabled	JP201	Closed
Mouse port/Floppy controller disabled	JP201	Open
í Video RAM installed select 512KB	JP205	pins 1 & 2 closed
Video RAM installed select 1MB	JP205	pins 2 & 3 closed
í Video RAM speed select 80ns	JP207	pins 1 & 2 closed
Video RAM speed select 100ns	JP207	pins 2 & 3 closed
í CMOS memory normal operation	JP504	Open
CMOS memory clear	JP504	Closed
í VGA enabled	JP550	pins 1 & 2 closed
VGA disabled	JP550	pins 2 & 3 closed
í Oscillator installed select Regular	JP705	pins 2 & 3 closed
Oscillator installed select Tri-state	JP705	pins 1 & 2 closed
í Floppy disk controller enabled	SW3/1	Off
Floppy disk controller disabled	SW3/1	On
í IDE controller enabled	SW3/2	Off
IDE controller disabled	SW3/2	On
í Serial port 1 enabled	SW3/3	Off
Serial port 1 disabled	SW3/3	On
í Serial port 2 enabled	SW3/4	Off
Serial port 2 disabled	SW3/4	On
í Parallel port enabled	SW3/5	Off
Parallel port disabled	SW3/5	On

Continued on next page...

CACHE COMPUTERS, INC.

LYNX 486 WORKSTATION (MODEL 335)

... continued from previous page

DRAM CONFIGURATION				
Size	Bank 0	Bank 1	Bank 2	Bank 3
1MB	(4) 256K x 9	NONE	NONE	NONE
2MB	(4) 256K x 9	(4) 256K x 9	NONE	NONE
3MB	(4) 256K x 9	(4) 256K x 9	(1) 256K x 36	NONE
4MB	(4) 256K x 9	(4) 256K x 9	(1) 256K x 36	(1) 256K x 36
4MB	(4) 1M x 9	NONE	NONE	NONE
5MB	(4) 1M x 9	(4) 256K x 9	NONE	NONE
6MB	(4) 1M x 9	(4) 256K x 9	(1) 256K x 36	NONE
7MB	(4) 1M x 9	(4) 256K x 9	(1) 256K x 36	(1) 256K x 36
8MB	(4) 1M x 9	(4) 1M x 9	NONE	NONE
9MB	(4) 1M x 9	(4) 1M x 9	(1) 256K x 36	NONE
10MB	(4) 1M x 9	(4) 1M x 9	(1) 256K x 36	(1) 256K x 36
12MB	(4) 1M x 9	(4) 1M x 9	(1) 1M x 36	NONE
13MB	(4) 1M x 9	(4) 1M x 9	(1) 1M x 36	(1) 256K x 36
16MB	(4) 1M x 9	(4) 1M x 9	(1) 1M x 36	(1) 1M x 36
16MB	(4) 4M x 9	NONE	NONE	NONE
17MB	(4) 4M x 9	(4) 256K x 9	NONE	NONE
18MB	(4) 4M x 9	(4) 256K x 9	(1) 256K x 36	NONE
19MB	(4) 4M x 9	(4) 256K x 9	(1) 256K x 36	(1) 256K x 36
20MB	(4) 4M x 9	(4) 1M x 9	NONE	NONE
21MB	(4) 4M x 9	(4) 1M x 9	(1) 256K x 36	NONE
22MB	(4) 4M x 9	(4) 1M x 9	(1) 256K x 36	(1) 256K x 36
24MB	(4) 4M x 9	(4) 1M x 9	(1) 1M x 36	NONE
25MB	(4) 4M x 9	(4) 1M x 9	(1) 1M x 36	(1) 256K x 36
28MB	(4) 4M x 9	(4) 1M x 9	(1) 1M x 36	(1) 1M x 36
32MB	(4) 4M x 9	(4) 4M x 9	NONE	NONE
33MB	(4) 4M x 9	(4) 4M x 9	(1) 256K x 36	NONE
34MB	(4) 4M x 9	(4) 4M x 9	(1) 256K x 36	(1) 256K x 36
36MB	(4) 4M x 9	(4) 4M x 9	(1) 1M x 36	NONE
37MB	(4) 4M x 9	(4) 4M x 9	(1) 1M x 36	(1) 256K x 36
40MB	(4) 4M x 9	(4) 4M x 9	(1) 1M x 36	(1) 1M x 36
48MB	(4) 4M x 9	(4) 4M x 9	(1) 4M x 36	NONE
49MB	(4) 4M x 9	(4) 4M x 9	(1) 4M x 36	(1) 256K x 36
52MB	(4) 4M x 9	(4) 4M x 9	(1) 4M x 36	(1) 1M x 36
64MB	(4) 4M x 9	(4) 4M x 9	(1) 4M x 36	(1) 4M x 36

CACHE CONFIGURATION			
Size	Bank 0	Bank 1	TAG
64KB	(4) 8K x 8	(4) 8K x 8	(2) 16K x 4
128KB	(4) 32K x 8	NONE	(2) 16K x 4
256KB	(4) 32K x 8	(4) 32K x 8	(2) 16K x 4

Continued on next page ...

CACHE COMPUTERS, INC.

LYNX 486 WORKSTATION (MODEL 335)

... continued from previous page

CACHE JUMPER CONFIGURATION				
Size	W9	W11	W16	W17
64KB	pins 1 & 2 closed	pins 1 & 2 closed	Open	pins 2 & 3 closed
128KB	pins 2 & 3 closed	pins 1 & 2 closed	pins 1 & 2 closed	pins 1 & 2 closed
256KB	pins 2 & 3 closed	pins 2 & 3 closed	pins 2 & 3 closed	pins 2 & 3 closed

CPU TYPE CONFIGURATION			
Type	JP502	W7	W14
80486SX	pins 2 & 3 closed	Closed	pins 2 & 3 closed
80487SX	pins 1 & 2 closed	Open	pins 1 & 2 and 3 & 4 closed
80486DX	pins 1 & 2 closed	Open	pins 1 & 2 and 3 & 4 closed

VIDEO CONFIGURATION			
VGA Resolution	SW10/1	SW10/2	SW10/3
1024 x 768 @ 70Hz	On	On	On
1024 x 768 @ 60Hz	Off	On	On
1024 x 768 @ 43Hz	On	Off	On
800 x 600 @ 70Hz	On	On	Off
800 x 600 @ 60Hz	Off	On	Off
800 x 600 @ 56Hz	Off	Off	On
640 x 480 @ 70Hz	On	Off	Off
640 x 480 @ 60Hz	Off	Off	Off

PAL CONFIGURATION		
Setting	JP221	JP222
Enabled	pins 1 & 2 closed	pins 2 & 3 closed
Disabled	pins 2 & 3 closed	pins 1 & 2 closed