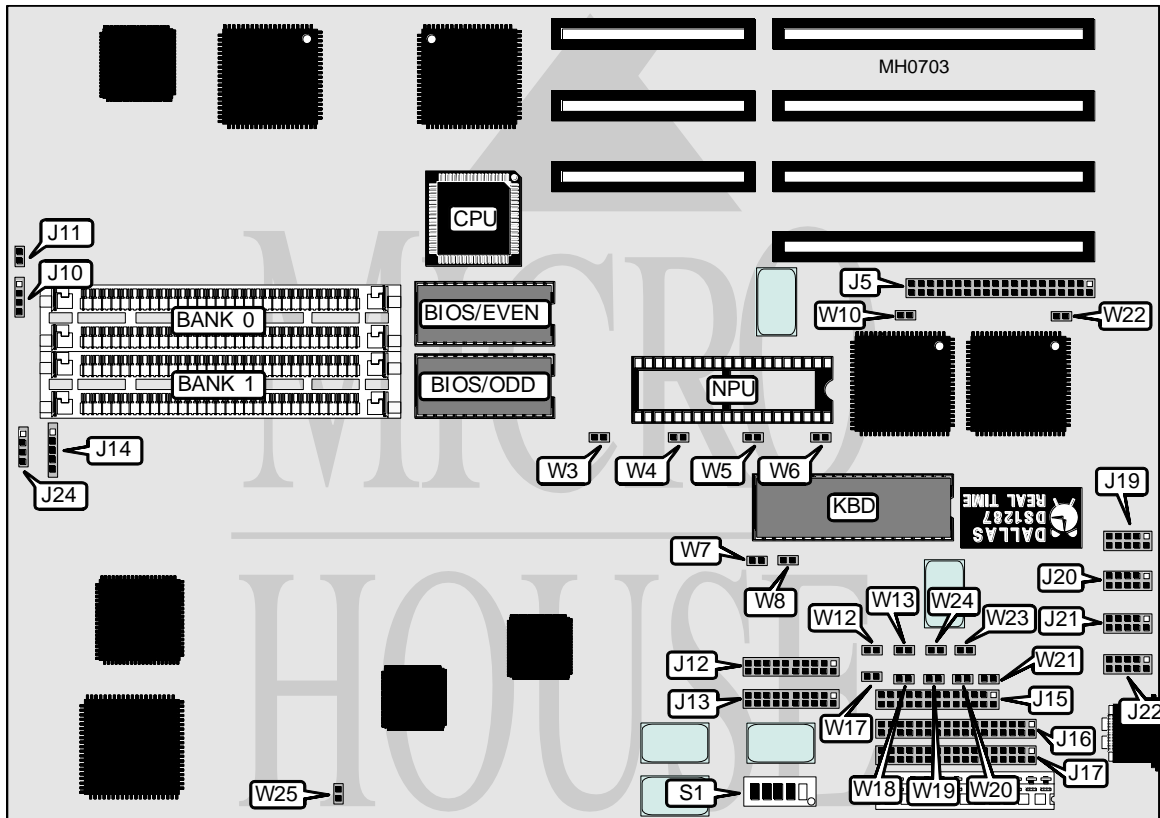


# WESTERN DIGITAL CORPORATION

## W D 2 8 6 - W D M 2 0

<b>Processor</b>	80286
<b>Processor Speed</b>	12.5MHz
<b>Chip Set</b>	Faraday
<b>Max. Onboard DRAM</b>	4MB
<b>Cache</b>	None
<b>BIOS</b>	AMI
<b>Dimensions</b>	330mm x 218mm
<b>I/O Options</b>	Parallel port, serial ports (2), bus mouse port, floppy drive interface, ST506/412 interface, video interface, IDE interface
<b>NPU Options</b>	80287



Continued on next page . . .

# WESTERN DIGITAL CORPORATION

## W D 2 8 6 - W D M 2 0

... continued from previous page

CONNECTIONS			
Purpose	Location	Purpose	Location
IDE interface (optional)	J5	Floppy drive interface	J16
Hard drive access LED	J10	ST506/412 drive control	J17
Reset switch	J11	Serial port 1	J19
ST506/412 data (Drive 0)	J12	Serial port 2	J20
ST506/412 data (Drive 1)	J13	Video interface	J21
Power LED & keylock	J14	PS/2 mouse port	J22
Parallel port (LPT1)	J15	Speaker	J24

USER CONFIGURABLE SETTINGS		
Function	Jumper	Position
í Factory configured - do not alter	W4 & W6	Open
í Factory configured - do not alter	W7	Closed
í Floppy drive interrupt enabled (IRQ6)	W8	Closed
Floppy drive interrupt disabled (IRQ6)	W8	Open
í Keyboard select AT compatible (101 key)	W12	Open
Keyboard select XT compatible (83 key)	W12	Closed
í Video port interrupt enabled (IRQ9)	W13	Closed
Video port interrupt disabled (IRQ9)	W13	Open
í Mouse port interrupt enabled (IRQ12)	W17	Closed
Mouse port interrupt disabled (IRQ12)	W17	Open
í Parallel port interrupt enabled (IRQ7)	W19	Closed
Parallel port interrupt disabled (IRQ7)	W19	Open
í Serial port 2 interrupt enabled (IRQ3)	W20	Closed
Serial port 2 interrupt disabled (IRQ3)	W20	Open
í Serial port 1 interrupt enabled (IRQ4)	W21	Closed
Serial port 1 interrupt disabled (IRQ4)	W21	Open
í Video port NMI enabled	W23	Closed
Video port NMI disabled	W23	Open
í Video port data buffering enabled	W24	pins 1 & 2 closed
Video port data buffering disabled	W24	pins 2 & 3 closed
í Video port enabled	W25	Closed
Video port disabled	W25	Open

DRAM CONFIGURATION		
Size	Bank 0	Bank 1
1MB	(2) 256K x 9	(2) 256K x 9
2MB	(2) 1M x 9	NONE
4MB	(2) 1M x 9	(2) 1M x 9
8MB	(2) 4M x 9	NONE
10MB	(2) 1M x 9	(2) 4M x 9
16MB	(2) 4M x 9	(2) 4M x 9

Continued on next page ...

**WESTERN DIGITAL CORPORATION****W D 2 8 6 - W D M 2 0**

... continued from previous page

VIDEO CONFIGURATION						
Type	S1/1	S1/2	S1/3	S1/4	S1/5	W18
Monochrome	Off	Off	On	Off	Off	1 & 2
CGA-40 columns	On	Off	Off	On	Off	2 & 3
CGA-80 columns	Off	Off	Off	On	Off	2 & 3
EGA-200 lines	On	On	On	Off	Off	2 & 3
EGA-350/480 lines	Off	On	On	Off	Off	2 & 3

Note: Pins designated should be in the closed position.

HARD DRIVE CONFIGURATION				
Type	W3	W5	W10	W22
ST506/412	Closed	Closed	Open	Open
IDE	Open	Open	Closed	Closed
Expansion card	Open	Open	Open	Open

Note: An expansion card hard drive controller may be used in addition to the ST506/412 with the ST506/412 Settings.