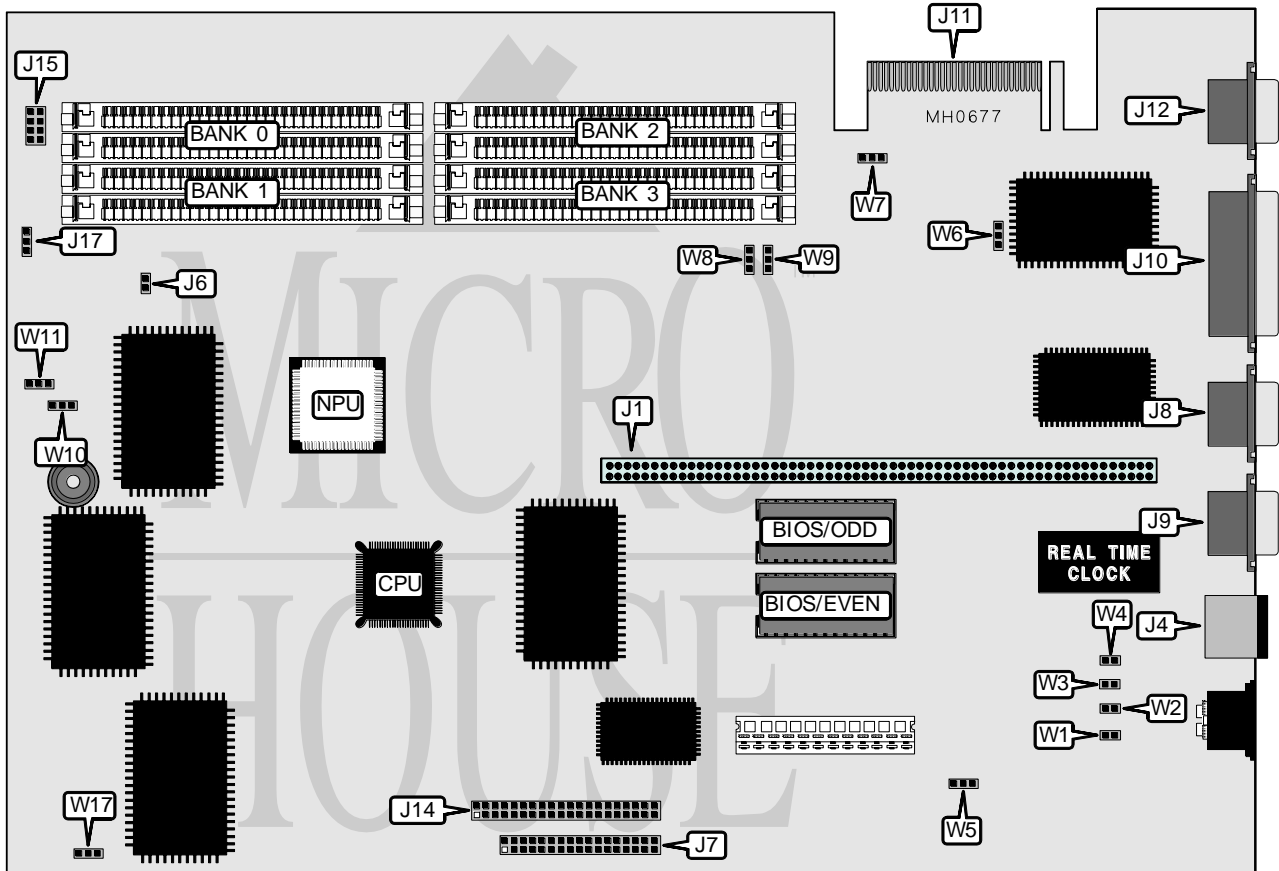


WESTERN DIGITAL CORPORATION

WD 386SX-LPX

Processor	80386SX
Processor Speed	16/20MHz
Chip Set	WD
Max. Onboard DRAM	32MB
Cache	None
BIOS	AMI/Award
Dimensions	330mm x 218mm
I/O Options	Parallel port, serial port (2), floppy drive interface, IDE interface, VGA port, bus mouse port, IBM video interface, proprietary bus expansion slot
NPU Options	80387SX



CONNECTIONS			
Purpose	Location	Purpose	Location
Proprietary bus expansion card	J1	Parallel port	J10
Mouse port	J4	IBM video interface	J11
Reset switch	J6	VGA port	J12
Floppy drive interface	J7	IDE interface	J14
Serial port 2	J8	Keyswitch/IDE interface LED	J15
Serial port 1	J9	External speaker	J17

Continued on next page . . .

WESTERN DIGITAL CORPORATION

WD386SX-LPX

... continued from previous page

USER CONFIGURABLE SETTINGS		
Function	Jumper	Position
í CMOS memory normal operation	W1	Open
CMOS memory clear	W1	Closed
í Factory configured - do not alter	W2	Open
í Factory configured - do not alter	W3	Closed
í Mouse interrupt enabled IRQ12	W4	Closed
Mouse interrupt disabled IRQ12	W4	Open
í Monitor type select color	W5	pins 2 & 3 closed
Monitor type select monochrome	W5	pins 1 & 2 closed
í VGA clock select internal	W6	pins 2 & 3 closed
VGA clock select external	W6	pins 1 & 2 closed
í VGA port enabled	W7	pins 2 & 3 closed
VGA port disabled	W7	pins 1 & 2 closed
í Monitor type select multisync	W8	pins 2 & 3 closed
Monitor type select fixed frequency	W8	pins 1 & 2 closed
í Monitor type select AT compatible	W9	pins 2 & 3 closed
Monitor type select PS/2 compatible	W9	pins 1 & 2 closed
í Speaker select internal	W10	pins 1 & 2 closed
Speaker select external	W10	pins 2 & 3 closed
í IDE interface LED enabled	W11	pins 2 & 3 closed
IDE interface LED disabled	W11	pins 1 & 2 closed

DRAM CONFIGURATION				
Size	Bank 0	Bank 1	Bank 2	Bank 3
1MB	(2) 256K x 9	(2) 256K x 9	NONE	NONE
2MB	(2) 256K x 9	(2) 256K x 9	(2) 256K x 9	(2) 256K x 9
2.5MB	(2) 256K x 9	(2) 1M x 9	NONE	NONE
4MB	(2) 1M x 9	(2) 1M x 9	NONE	NONE
5MB	(2) 256K x 9	(2) 256K x 9	(2) 1M x 9	(2) 1M x 9
8MB	(2) 1M x 9	(2) 1M x 9	(2) 1M x 9	(2) 1M x 9