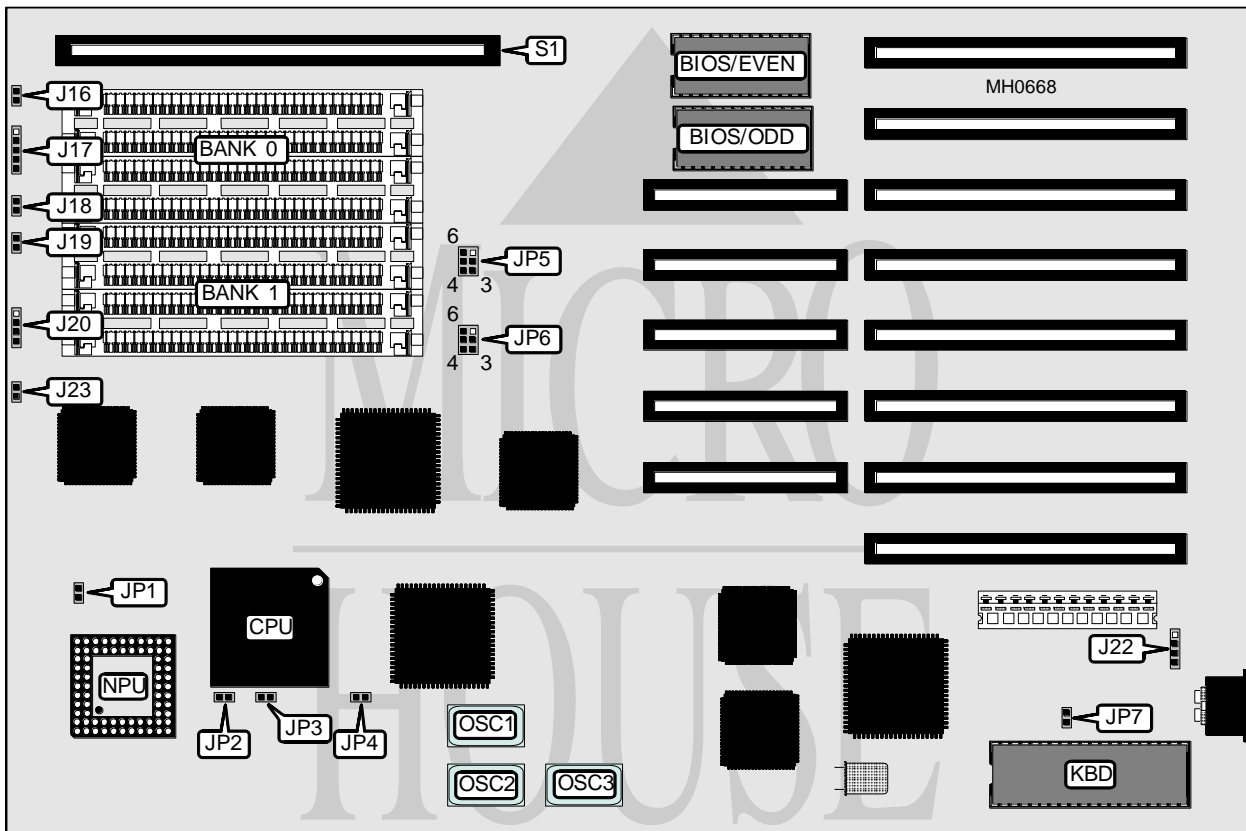


# UNIDENTIFIED

## 386

<b>Processor</b>	80386DX
<b>Processor Speed</b>	16/20/25MHz
<b>Chip Set</b>	C & T
<b>Max. Onboard DRAM</b>	8MB
<b>Cache</b>	None
<b>BIOS</b>	AMI
<b>Dimensions</b>	330mm x 218mm
<b>I/O Options</b>	32-bit external memory card slot
<b>NPU Options</b>	80387



CONNECTIONS			
Purpose	Location	Purpose	Location
Turbo switch	J16	Speaker	J20
Power LED & keylock	J17	External battery	J22
Turbo LED 1	J18	Turbo LED 2	J23
Reset switch	J19	32-bit external memory card	S1

Continued on next page . . .

## UNIDENTIFIED

386

... continued from previous page

USER CONFIGURABLE SETTINGS		
Function	Jumper	Position
í NPU mode select synchronous with CPU	JP1	Open
NPU mode select asynchronous with CPU	JP1	Closed
í NPU absent	JP2	Open
NPU present	JP2	Closed
í Pipeline mode enabled	JP3	Closed
Pipeline mode disabled	JP3	Open
í NPU enabled	JP4	Closed
NPU disabled	JP4	Open
í Monitor type select color	JP7	Closed
Monitor type select monochrome	JP7	Open
í CPU speed select low (OSC2)	J16	Open
CPU speed select high (OSC3)	J16	Closed
í Battery type select internal	J22	pins 2 & 3 closed
Battery type select external	J22	Closed

DRAM CONFIGURATION		
Size	Bank 0	Bank 1
1MB	(4) 256K x 9	NONE
2MB	(4) 256K x 9	(4) 256K x 9
4MB	(4) 1M x 9	NONE
8MB	(4) 1M x 9	(4) 1M x 9

DRAM JUMPER CONFIGURATION		
Type	JP5	JP6
SIMM Banks 0 & 1, DRAM card Banks 2 & 3	pins 2 & 3, 4 & 5 closed	pins 2 & 3, 4 & 5 closed
DRAM card Banks 0 & 1, SIMM Banks 2 & 3	pins 1 & 2, 5 & 6 closed	pins 1 & 2, 5 & 6 closed
Note: When using onboard SIMMs only select default setting.		