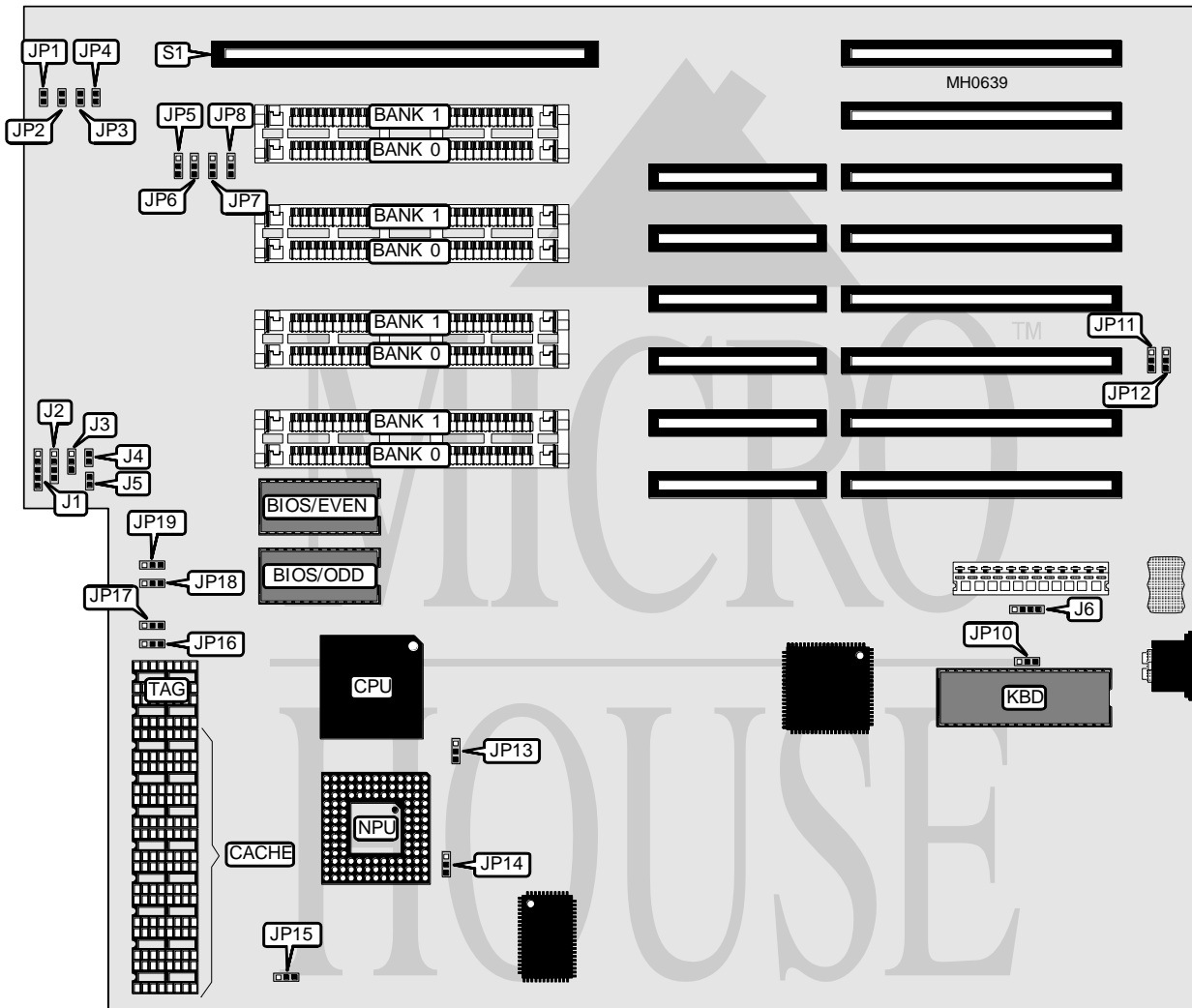


YOUTH KEEP ENTERPRISES, LTD.

502 386DX

Processor	80386DX
Processor Speed	33MHz
Chip Set	Unidentified
Max. Onboard DRAM	8MB
Cache	64/256KB
BIOS	Unidentified
Dimensions	355mm x 304mm
I/O Options	32-bit external memory card slot
NPU Options	80387/3167



CONNECTIONS			
Purpose	Location	Purpose	Location
Power LED & keylock	J1	Turbo LED	J5
Speaker	J2	External battery	J6
Turbo switch	J3	32-bit external memory card	S1
Reset switch	J4		

Continued on next page . . .

YOUTH KEEP ENTERPRISES, LTD.

502 386DX

... continued from previous page

USER CONFIGURABLE SETTINGS		
Function	Jumper	Position
í Monitor type select color	JP10	pins 1 & 2 closed
Monitor type select monochrome	JP10	pins 2 & 3 closed
í NPU disabled	JP13	pins 2 & 3 closed
NPU enabled	JP13	pins 1 & 2 closed
í NPU mode select asynchronous with CPU	JP14	pins 1 & 2 closed
NPU mode select synchronous with CPU	JP14	pins 2 & 3 closed
í CPU speed select fast	JP15	pins 1 & 2 closed
CPU speed select slow	JP15	pins 2 & 3 closed

DRAM CONFIGURATION		
Size	Bank 0	Bank 1
1MB	(4) 256K x 9	NONE
2MB	(4) 256K x 9	(4) 256K x 9
4MB	(4) 1M x 9	NONE
5MB	(4) 256K x 9	(4) 1M x 9
8MB	(4) 1M x 9	(4) 1M x 9

DRAM JUMPER CONFIGURATION								
Size	JP1	JP2	JP3	JP4	JP5	JP6	JP7	JP8
1MB	Closed	Closed	Closed	Closed	2 & 3	Open	Open	Open
2MB	Closed	Closed	Closed	Closed	2 & 3	2 & 3	Open	Open
4MB	Closed	Closed	Open	Open	1 & 2	Open	Open	Open
5MB	Closed	Open	Closed	Closed	2 & 3	1 & 2	Open	Open
8MB	Closed	Open	Open	Closed	1 & 2	1 & 2	Open	Open

Note: Pins designated should be in the closed position.

CACHE CONFIGURATION		
Size	Bank 0	TAG
64KB	(8) 64K x 1	(2) 64K x 1
256KB	(8) 256K x 1	(2) 256K x 1