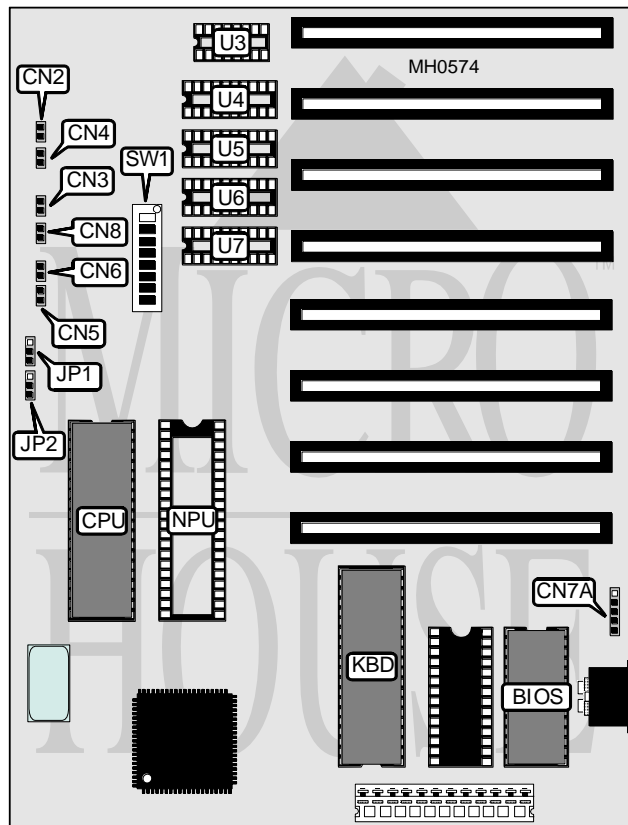


# HEDAKA

## HED-918

<b>Processor</b>	8088/V20
<b>Processor Speed</b>	4.77/10MHz
<b>Chip Set</b>	None
<b>Max. Onboard DRAM</b>	640KB
<b>Cache</b>	None
<b>BIOS</b>	AMI
<b>Dimensions</b>	217mm x 166mm
<b>I/O Options</b>	None
<b>NPU Options</b>	8087



CONNECTIONS			
Purpose	Location	Purpose	Location
Power LED	CN2	Turbo LED	CN6
Speaker	CN3	External battery	CN7A
Reset switch	CN4	Keylock	CN8
Turbo switch	CN5		

Continued on next page . . .

# HEDAKA

## HED-918

... continued from previous page

USER CONFIGURABLE SETTINGS		
Function	Jumper/Switch	Position
í CPU type select Intel 8088	JP2	pins 1 & 2 closed
CPU type select NEC V-20	JP2	pins 2 & 3 closed
í Factory configured - do not alter	SW1/1	Off
í NPU disabled	SW1/2	On
NPU enabled	SW1/2	Off

DRAM CONFIGURATION		
Size	44256 Chips	411000 Chips
0KB	NONE	NONE
128KB	U7	NONE
256KB	U6 & U7	NONE
384KB	U5, U6 & U7	NONE
512KB	U4, U5, U6 & U7	NONE
512KB	NONE	U4, U5, U6 & U7
640KB	U3, U4, U5, U6 & U7	NONE
640KB	U3	U4, U5, U6 & U7

DRAM JUMPER/SWITCH CONFIGURATION			
Size	JP1	SW1/3	SW1/4
0KB	pins 1 & 2 closed	On	On
128KB	pins 1 & 2 closed	Off	On
256KB	pins 1 & 2 closed	Off	On
384KB	pins 1 & 2 closed	Off	On
512KB	pins 1 & 2 closed	Off	On
512KB	pins 2 & 3 closed	Off	On
640KB	pins 1 & 2 closed	On	Off
640KB	pins 2 & 3 closed	On	Off

FLOPPY DRIVE CONFIGURATION		
Drives installed	SW1/7	SW1/8
1	On	On
2	Off	On
3	On	Off
4	Off	Off

MONITOR CONFIGURATION		
Type	SW1/3	SW1/4
None	On	On
40 x 25 color	Off	On
80 x 25 color	On	Off
Monochrome	Off	Off