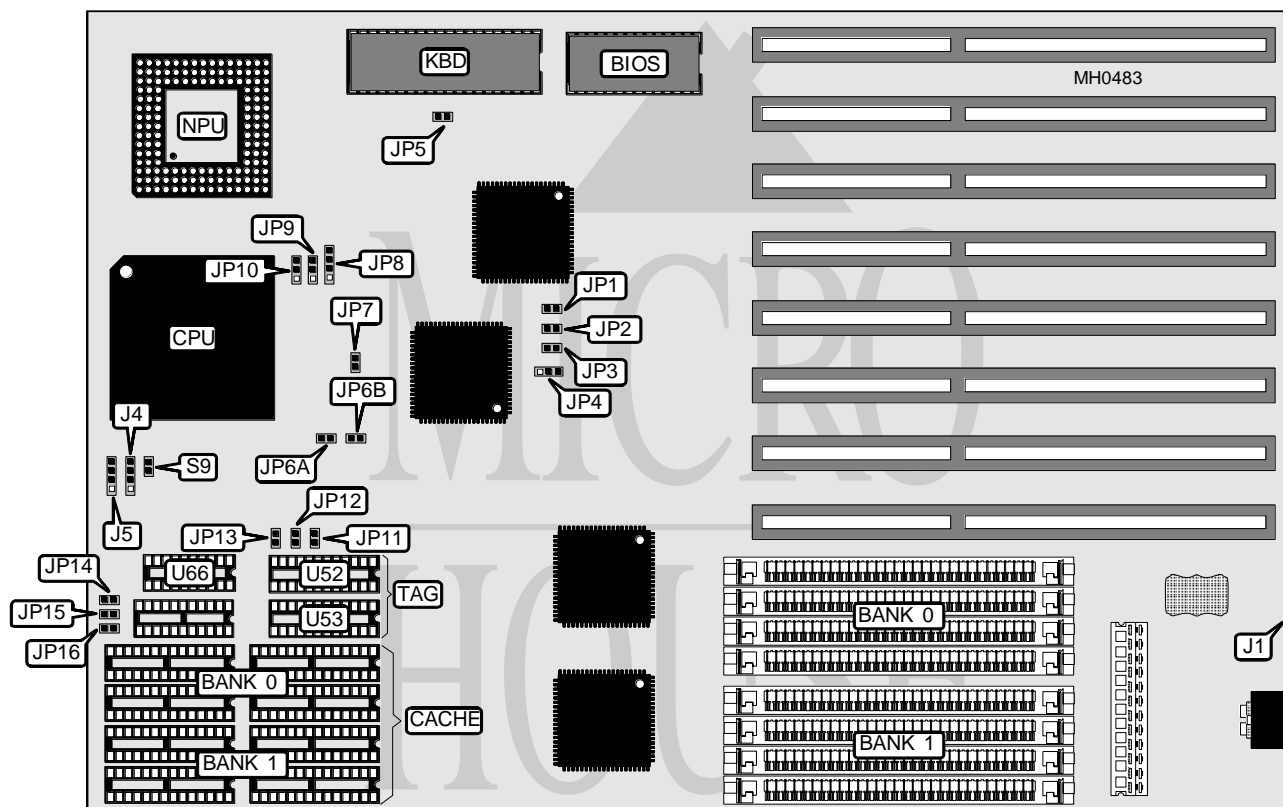


GENESYS ATE, INC.

GX 486 E

Processor	80486SX/80486DX/80486DX2
Processor Speed	33/50/66(internal)MHz
Chip Set	OPTI
Max. Onboard DRAM	128MB
Cache	64/128/256/512KB
BIOS	AMI
Dimensions	330mm x 218mm
I/O Options	None
NPU Options	4167



CONNECTIONS

Purpose	Location	Purpose	Location
External battery	J1	Power LED & keylock	J5
Speaker	J4	Reset switch	S9

Continued on next page . . .

GENESYS ATE, INC.

G X 4 8 6 E

... continued from previous page

USER CONFIGURABLE SETTINGS		
Function	Jumper	Position
I/O Bus select normal operation	JP1	Open
EXRDY ISA card signal affects CHRDY bus signal	JP1	Closed
Monitor type select color	JP5	Closed
Monitor type select monochrome	JP5	Open
Note: The location of JP1 is unidentified.		

DRAM CONFIGURATION		
Size	Bank 0	Bank 1
4MB	(4) 1M x 9	NONE
8MB	(4) 1M x 9	(4) 1M x 9
16MB	(4) 4M x 9	NONE
20MB	(4) 4M x 9	(4) 1M x 9
32MB	(4) 4M x 9	(4) 4M x 9
64MB	(4) 16M x 9	NONE
128MB	(4) 16M x 9	(4) 16M x 9

CACHE CONFIGURATION				
Size	Bank 0	Bank 1	TAG	Dirty Bit (U66)
64KB	(4) 8K x 8	(4) 8K x 8	(1) 8K x 8	(1) 16K x 1 or (1) 64K x 1
128KB	(4) 32K x 8	NONE	(1) 8K x 8	(1) 16K x 1 or (1) 64K x 1
256KB	(4) 32K x 8	(4) 32K x 8	(2) 8K x 8	(1) 16K x 1 or (1) 64K x 1
256KB	(4) 32K x 8	(4) 32K x 8	(2) 8K x 8	(1) 64K x 1

CACHE DIRTY BIT JUMPER CONFIGURATION			
Size	JP14	JP15	JP16
64KB	Open	Open	Open
128KB	Open	Closed	Open
256KB	Closed	Closed	Open
256KB	Closed	Closed	Closed

CACHE JUMPER CONFIGURATION					
Size	JP6A	JP6B	JP11	JP12	JP13
64KB	Open	Closed	Open	Open	Open
128KB	Closed	Open	Open	Open	Closed
256KB ¹	Open	Closed	Open	Closed	Closed
256KB ²	Open	Closed	Open	Closed	Closed
Note ¹ : Use this setting when (1) 16K x 1 is installed at U66.					
Note ² : Use this setting when (1) 64K x 1 is installed at U66.					

CPU TYPE CONFIGURATION		
Type	JP8	JP10
80486SX	pins 2 & 3 closed	Open
80487SX	pins 1 & 2, 3 & 4 closed	pins 1 & 2 closed
80486DX	pins 1 & 2, 3 & 4 closed	pins 2 & 3 closed

Continued on next page ...

GENESYS ATE, INC.

G X 4 8 6 E

... continued from previous page

CPU SPEED CONFIGURATION					
Speed	JP2	JP3	JP4	JP7	JP9
20MHz	Open	Open	2 & 3	Closed	1 & 2
25MHz	Open	Open	1 & 2	Open	1 & 2
33MHz	Closed	Open	1 & 2	Open	1 & 2
40MHz	Open	Closed	1 & 2	Open	1 & 2
50MHz	Closed	Closed	1 & 2	Open	2 & 3
Note: Pins designated should be in the closed position.					