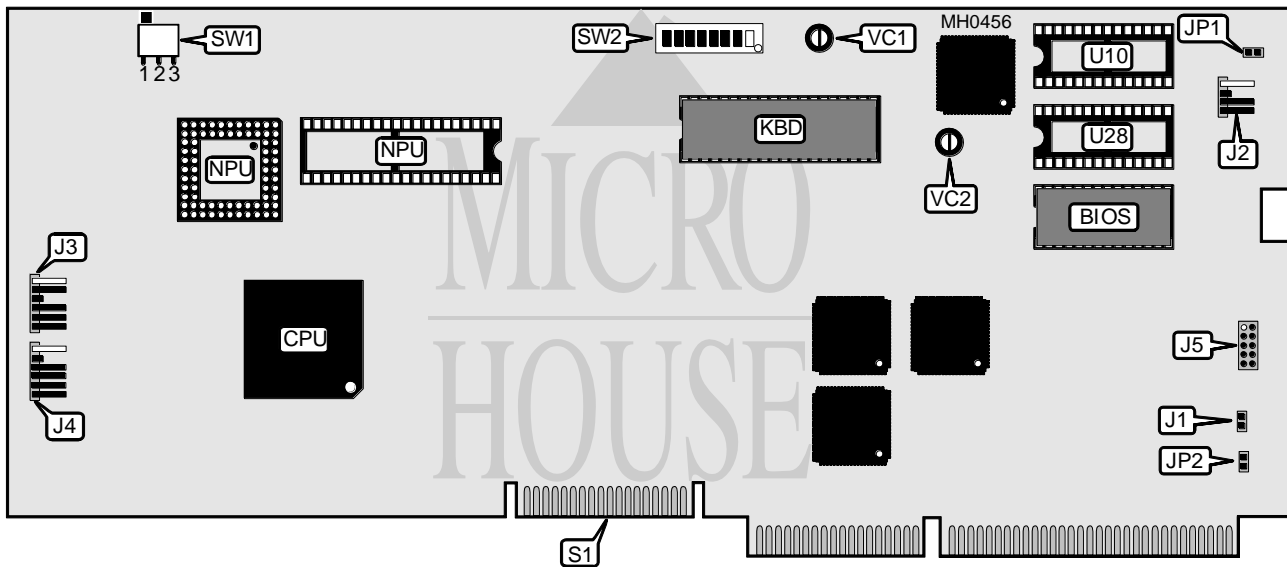


# NCR CORPORATION

## PC916/PC920

<b>Processor</b>	80386DX
<b>Speed</b>	16/20MHz
<b>Chip Set</b>	Unidentified
<b>Max. Onboard DRAM</b>	None
<b>BIOS</b>	Unidentified
<b>Cache</b>	None
<b>Dimensions</b>	290mm x 106mm
<b>I/O Options</b>	Proprietary external memory bus
<b>NPU Options</b>	80287/80387



CONNECTIONS			
Purpose	Location	Purpose	Location
External Battery	J2	Keyboard plug	J5
Power LEDs & keylock	J3	Proprietary external memory bus	S1
Speaker & volume control	J4	EPROM expansion ROMs	U10 & U28

Continued on next page . . .

# NCR CORPORATION

## PC916/PC920

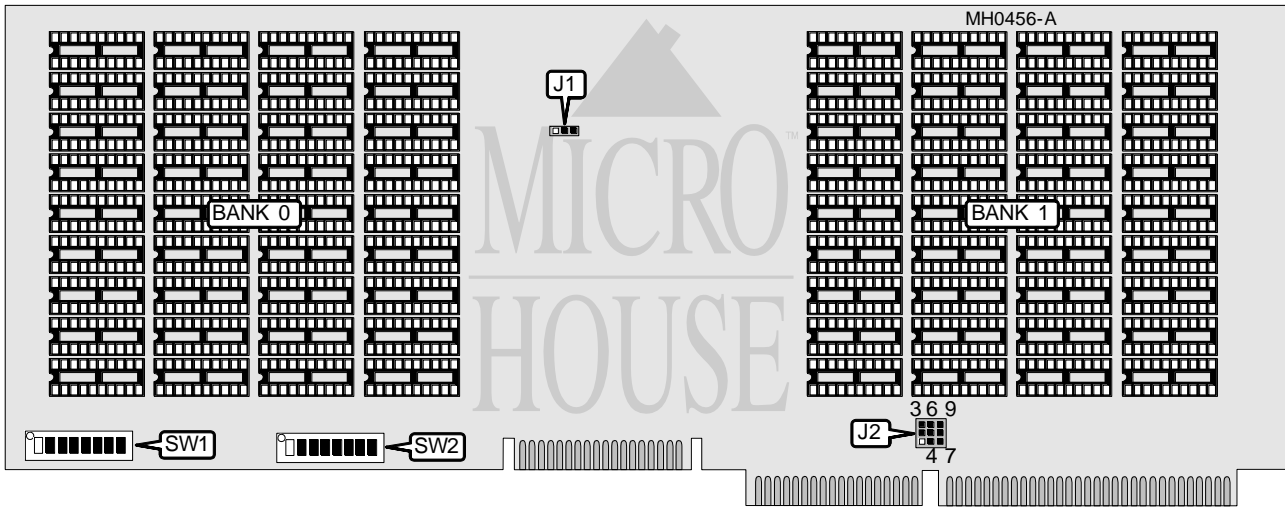
... continued from previous page

USER CONFIGURABLE SETTINGS		
Function	Jumper/Switch	Position
í Factory configured - do not alter.	J1	N/A
í Power good signal detect from power supply	JP1	Off
Power good signal detect from board	JP1	On
DMA speed select 4MHz	JP2	Off
DMA speed select 8MHz	JP2	On
í Monitor type select color	SW1	pins 1 & 2 closed
Monitor type select monochrome	SW1	pins 2 & 3 closed
í NPU 80387 disabled	SW2/1	Off
NPU 80387 enabled	SW2/1	On
í NPU 80287 disabled (Version A)	SW2/2	Off
NPU 80287 enabled (Version A)	SW2/2	On
í Factory configured - do not alter (Version B)	SW2/2	Off
í DMA page register mode select extended (Version A)	SW2/3	Off
DMA page register mode select PC8-standard (Version A)	SW2/3	On
í Video ROM caching enabled (Version B)	SW2/3	Off
Video ROM caching disabled (Version B)	SW2/3	On
í Fail-safe timer non-maskable interrupt disabled	SW2/4	Off
Fail-safe timer non-maskable interrupt enabled	SW2/4	On
í IRQ 10 disabled	SW2/5	Off
IRQ 10 enabled	SW2/5	On
í IRQ 11 disabled	SW2/6	Off
IRQ 11 enabled	SW2/6	On
í IRQ 12 disabled	SW2/7	Off
IRQ 12 enabled	SW2/7	On
í CPU speed when accessing floppy disk select 16Mhz	SW2/8	On
CPU speed when accessing floppy disk select 8Mhz	SW2/8	Off
í Factory configured - do not alter (Version A)	VC1	N/A
í Factory configured - do not alter (Version A)	VC2	N/A
<p>Notes: If JP2 is not present on main board, JP2 is factory set to open, if JP2 is present then JP2 is factory set to closed and should not be altered.</p> <p>Version B, main boards with part numbers of 150-0006935 and later, do not support the 80287. Location of 80287 NPU is unverified.</p> <p>On Version A main boards with part numbers of 150-0004426 or later, SW2/switch 3 controls video ROM caching and DMA is always in extended mode.</p> <p>If using a third-party video card, video ROM caching should be disabled.</p> <p>Variable capacitors VC1 and VC2 are present only on Version A main boards.</p>		

Continued on next page . . .

**NCR CORPORATION**  
**PC916/PC920**

... continued from previous page



EXTERNAL MEMORY CARD CONFIGURATION		
Size	Bank 0	Bank 1
1MB	(36) 41256	NONE
2MB	(36) 41256	(36) 41256

Note: Location of banks 0 & 1 unidentified. Memory chips are unidentified.

EXTERNAL MEMORY CARD JUMPER CONFIGURATION	
Size	J2
1MB	pins 2 & 3, 5 & 6, and 8 & 9 closed
2MB	pins 1 & 2, 4 & 5, and 7 & 8 closed

EXTERNAL MEMORY CARD SWITCH CONFIGURATION								
Size	SW1/1	SW1/2	SW1/3	SW1/4	SW1/5	SW1/6	SW1/7	SW1/8
1MB	On	On	On	On	On	On	On	On
2MB	On	On	On	On	On	On	On	On

EXTERNAL MEMORY CARD SWITCH CONFIGURATION (CON'T)								
Size	SW2/1	SW2/2	SW2/3	SW2/4	SW2/5	SW2/6	SW2/7	SW2/8
1MB	Off	On	On	On	On	On	On	On
2MB	On	Off	On	On	On	On	On	On