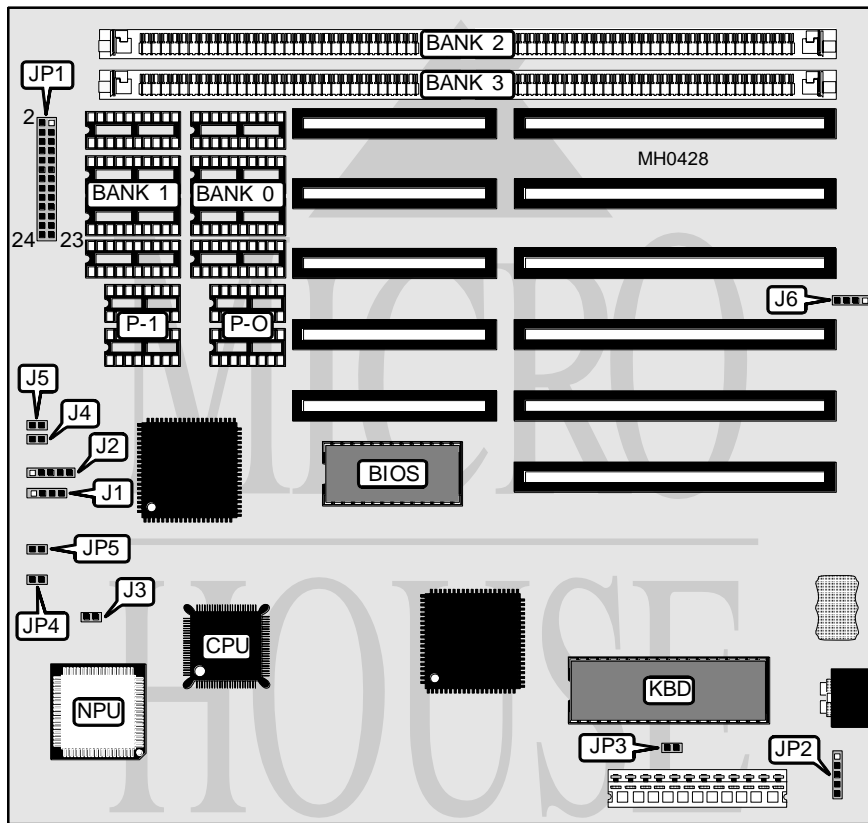


# UNIDENTIFIED UM 386SX

<b>Processor</b>	80386SX
<b>Processor Speed</b>	16/20/24MHz
<b>Chip Set</b>	UMC
<b>Max. Onboard DRAM</b>	5MB
<b>Cache</b>	None
<b>BIOS</b>	AMI
<b>Dimensions</b>	221mm x 216mm
<b>I/O Options</b>	None
<b>NPU Options</b>	80387SX



CONNECTIONS			
Purpose	Location	Purpose	Location
Speaker	J1	Turbo switch	J5
Power LED & keylock	J2	External battery	J6
Reset switch	J3	Auxiliary keyboard	JP2
Turbo LED	J4		

Continued on next page . . .

# UNIDENTIFIED

## UM 386SX

... continued from previous page

USER CONFIGURABLE SETTINGS		
Function	Jumper	Position
í Monitor type select color	JP3	Closed
Monitor type select monochrome	JP3	Open

DRAM CONFIGURATION						
Size	Bank 0	Parity (P-0)	Bank 1	Parity (P-1)	Bank 2	Bank 3
512KB	(4) 44256	(2) 41256	NONE	NONE	NONE	NONE
512KB	NONE	NONE	NONE	NONE	(2) 256K x 9	NONE
1MB	(4) 44256	(2) 41256	(4) 44256	(2) 41256	NONE	NONE
1MB	NONE	NONE	NONE	NONE	(2) 256K x 9	(2) 256K x 9
2MB	(4) 44256	(2) 41256	(4) 44256	(2) 41256	(2) 256K x 9	(2) 256K x 9
2MB	NONE	NONE	NONE	NONE	(2) 1M x 9	NONE
3MB	(4) 44256	(2) 41256	(4) 44256	(2) 41256	(2) 1M x 9	NONE
4MB	NONE	NONE	NONE	NONE	(2) 1M x 9	(2) 1M x 9
5MB	(4) 44256	(2) 41256	(4) 44256	(2) 41256	(2) 1M x 9	(2) 1M x 9

DRAM JUMPER CONFIGURATION	
Size	JP1
512KB	pins 1&2, 3&4, 5&6, 7&8, 9&10, 11&12, 13&14, 15&16, 17&18, 19&20, 21&22, 23&24
512KB	pins 1&3, 2&4, 5&7, 6&8, 9&11, 10&12, 13&15, 14&16, 17&19, 18&20, 21&23, 22&24
1MB	pins 1&2, 3&4, 5&6, 7&8, 9&10, 11&12, 13&14, 15&16, 17&18, 19&20, 21&22, 23&24
1MB	pins 1&3, 2&4, 5&7, 6&8, 9&11, 10&12, 13&15, 14&16, 17&19, 18&20, 21&23, 22&24
2MB	pins 1&2, 3&4, 5&6, 7&8, 9&10, 11&12, 13&14, 15&16, 17&18, 19&20, 21&22, 23&24
2MB	pins 1&3, 2&4, 5&7, 6&8, 9&11, 10&12, 13&15, 14&16, 17&19, 18&20, 21&23, 22&24
3MB	pins 1&2, 3&4, 5&6, 7&8, 9&10, 11&12, 13&14, 15&16, 17&18, 19&20, 21&22, 23&24
4MB	pins 1&3, 2&4, 5&7, 6&8, 9&11, 10&12, 13&15, 14&16, 17&19, 18&20, 21&23, 22&24
5MB	pins 1&2, 3&4, 5&6, 7&8, 9&10, 11&12, 13&14, 15&16, 17&18, 19&20, 21&22, 23&24

Note: Pins designated should be in the closed position.

DRAM PARITY CONFIGURATION		
Setting	JP4	JP5
Enabled	Closed	Closed
Disabled	Open	Open