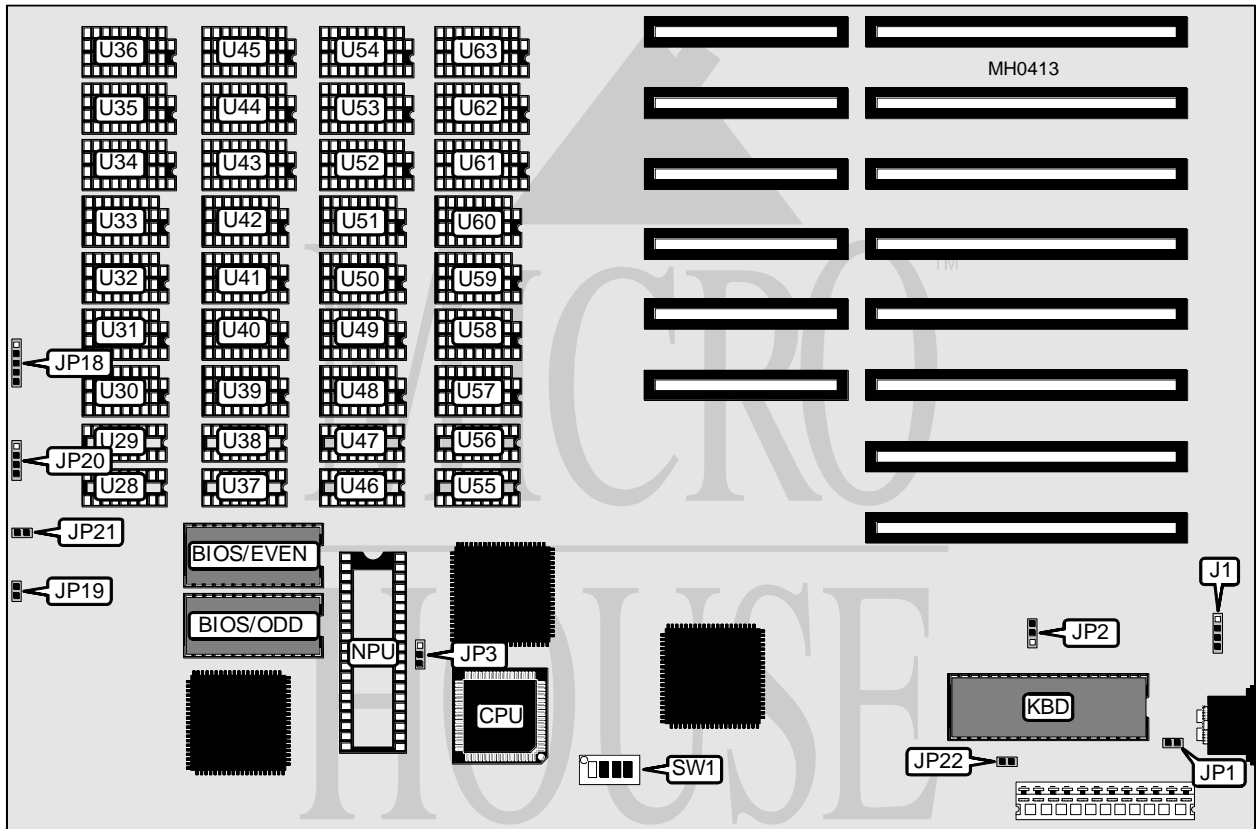


# KOUWELL ELECTRONIC CORPORATION

## K W - 2 4 1

<b>Processor</b>	80286
<b>Processor Speed</b>	12MHz
<b>Chip Set</b>	G-2
<b>Max. Onboard DRAM</b>	4MB
<b>Cache</b>	None
<b>BIOS</b>	AMI/Phoenix
<b>Dimensions</b>	330mm x 218mm
<b>I/O Options</b>	None
<b>NPU Options</b>	80287



CONNECTIONS			
Purpose	Location	Purpose	Location
External battery	J1	Turbo LED	JP19
Turbo switch	JP1	Speaker	JP20
Power LED & keylock	JP18	Reset switch	JP21

Continued on next page . . .

# KOUWELL ELECTRONIC CORPORATION

## K W - 2 4 1

... continued from previous page

USER CONFIGURABLE SETTINGS		
Function	Jumper/Switch	Position
í CPU speed select forced high	JP1	Closed
CPU speed select switchable at keyboard	JP1	Open
í Wait state select zero wait state	JP2	pins 2 & 3 closed
Wait state select one wait state	JP2	Open
Wait state setting configured in BIOS (AMI)	JP2	pins 1 & 2 closed
í NPU speed select 10MHz	JP3	pins 1 & 2 closed
NPU speed select 6 or 8MHz	JP3	pins 2 & 3 closed
í Factory configured - do not alter	JP22	Open
í Monitor type select color	SW1/1	On
Monitor type select monochrome	SW1/1	Off

DRAM CONFIGURATION				
Size	4164	41256	44256	411000
640KB	(18) U30 to U33 U39 to U42 U48 to U51 & U54 U57 to U60 & U63	(2) U36 & U45	(4) U34 & U35 U44 & U43	NONE
1MB	NONE	(4) U36 & U45 U54 & U63	(8) U34 & U35 U43 & U44 U52 & U53 U61 & U62	NONE
4MB	NONE	NONE	NONE	(36) All

Note : DRAM configurations for 512KB & 2MB are unknown.

DRAM SWITCH CONFIGURATION			
Size	SW1/2	SW1/3	SW1/4
512KB	On	On	Off
640KB	On	Off	On
1MB	On	Off	Off
2MB	Off	Off	On
4MB	Off	Off	Off