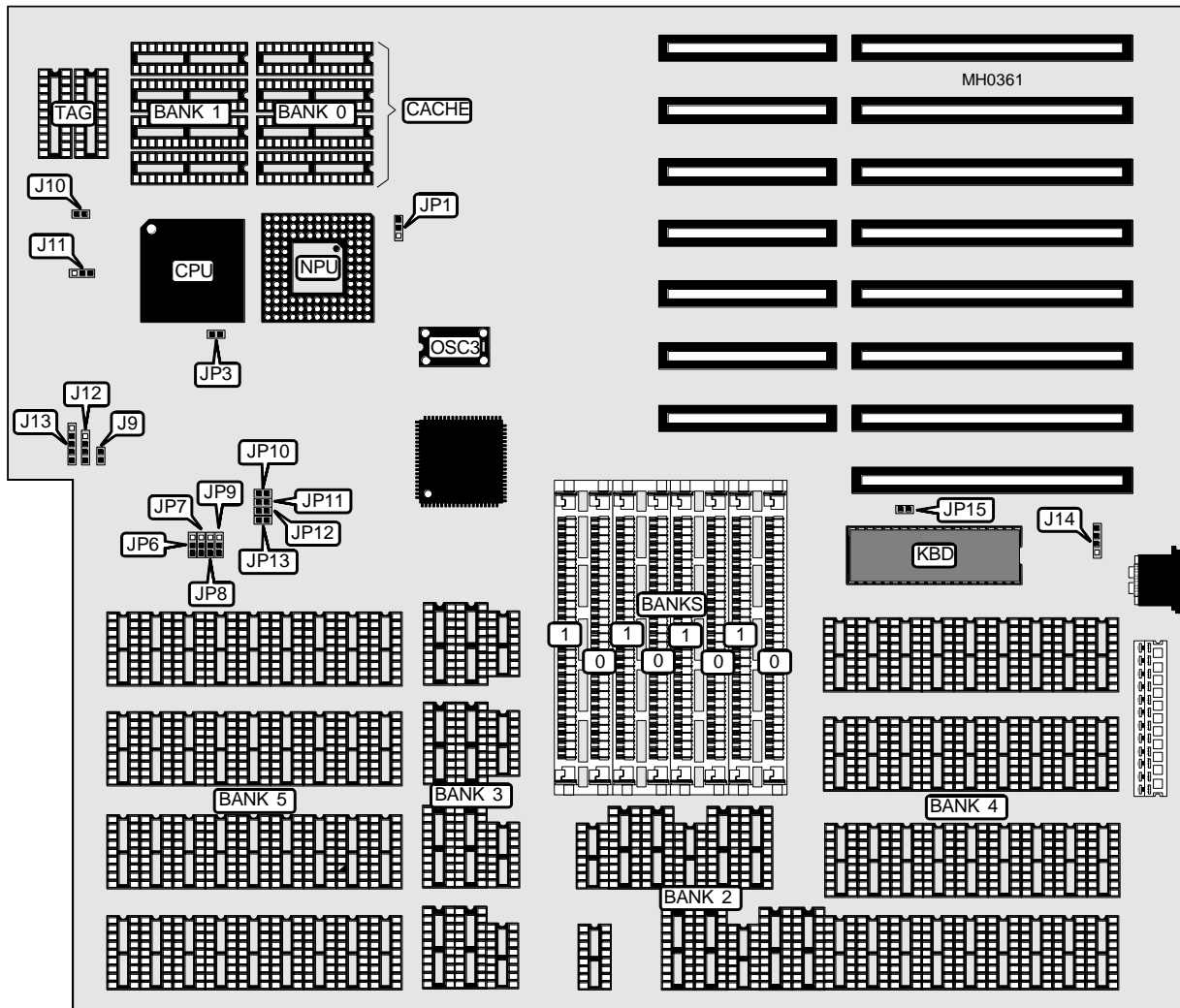


JOINDATA SYSTEMS, INC.

G 3 8 6 S

Processor	80386DX
Processor Speed	25/33MHz
Chip Set	SIS
Max. Onboard DRAM	16MB
SRAM Cache	32/64KB
BIOS	AMI
Dimensions	330mm x 218mm
I/O Options	None
NPU Options	80387/3167



CONNECTIONS			
Purpose	Location	Purpose	Location
Reset switch	J9	Speaker	J12
Turbo LED	J10	Power LED & keylock	J13
Speaker	J11	External battery	J14

Continued on next page . . .

JOINDATA SYSTEMS, INC.

G386S

... continued from previous page

USER CONFIGURABLE SETTINGS

Function	Jumper	Position
í NPU mode select synchronous with CPU	JP3	Open
NPU mode select synchronous with OSC3	JP3	Closed
í Monitor type select color	JP15	Closed
Monitor type select monochrome	JP15	Open

DRAM CONFIGURATION

Size	Bank 0	Bank 1	Bank 2	Bank 3	Bank 4	Bank 5
1MB	(4) 256K x 9	NONE	NONE	NONE	NONE	NONE
1MB	NONE	NONE	(8) 44256	NONE	NONE	NONE
2MB	(4) 256K x 9	(4) 256K x 9	NONE	NONE	NONE	NONE
2MB	NONE	NONE	(8) 44256	(8) 44256	NONE	NONE
4MB	(4) 1M x 9	NONE	NONE	NONE	NONE	NONE
4MB	NONE	NONE	NONE	NONE	(36) 411000	NONE
8MB	(4) 1M x 9	(4) 1M x 9	NONE	NONE	NONE	NONE
8MB	NONE	NONE	NONE	NONE	(36) 411000	(36) 411000
12MB	(4) 1M x 9	NONE	NONE	NONE	(36) 411000	(36) 411000
12MB	(4) 1M x 9	(4) 1M x 9	NONE	NONE	(36) 411000	NONE
16MB	(4) 1M x 9	(4) 1M x 9	NONE	NONE	(36) 411000	(36) 411000

DRAM PARITY CONFIGURATION

Size	Parity 2	Parity 3
1MB	(4) 41256	NONE
2MB	(4) 41256	(4) 41256

DRAM JUMPER CONFIGURATION

Size	JP6	JP7	JP8	JP9
1MB	pins 2 & 3 closed	pins 2 & 3 closed	pins 2 & 3 closed	pins 2 & 3 closed
1MB	pins 1 & 2 closed	pins 1 & 2 closed	pins 1 & 2 closed	pins 1 & 2 closed
2MB	pins 2 & 3 closed	pins 2 & 3 closed	pins 2 & 3 closed	pins 2 & 3 closed
2MB	pins 1 & 2 closed	pins 1 & 2 closed	pins 1 & 2 closed	pins 1 & 2 closed
4MB	pins 2 & 3 closed	pins 2 & 3 closed	pins 2 & 3 closed	pins 2 & 3 closed
4MB	pins 1 & 2 closed	pins 1 & 2 closed	pins 1 & 2 closed	pins 1 & 2 closed
8MB	pins 2 & 3 closed	pins 2 & 3 closed	pins 2 & 3 closed	pins 2 & 3 closed
8MB	pins 1 & 2 closed	pins 1 & 2 closed	pins 1 & 2 closed	pins 1 & 2 closed
12MB	pins 1 & 2 closed	pins 1 & 2 closed	pins 1 & 2 closed	pins 1 & 2 closed
12MB	pins 2 & 3 closed	pins 2 & 3 closed	pins 2 & 3 closed	pins 2 & 3 closed
16MB	pins 1 & 2 closed	pins 1 & 2 closed	pins 1 & 2 closed	pins 1 & 2 closed

CACHE CONFIGURATION

Size	Bank 0	Bank 1	TAG
32KB	(4) 8K x 8	NONE	(2) 16K x 4
64KB	(4) 8K x 8	(4) 8K x 8	(2) 16K x 4

Continued on next page...

JOINDATA SYSTEMS, INC.
G 3 8 6 S

... continued from previous page

CACHE JUMPER CONFIGURATION	
Size	JP1
32KB	pins 1 & 2 closed
64KB	pins 2 & 3 closed

CACHE JUMPER CONFIGURATION				
Size	JP10	JP11	JP12	JP13
32KB	Closed	Closed	Closed	Closed
64KB	Open	Open	Open	Open