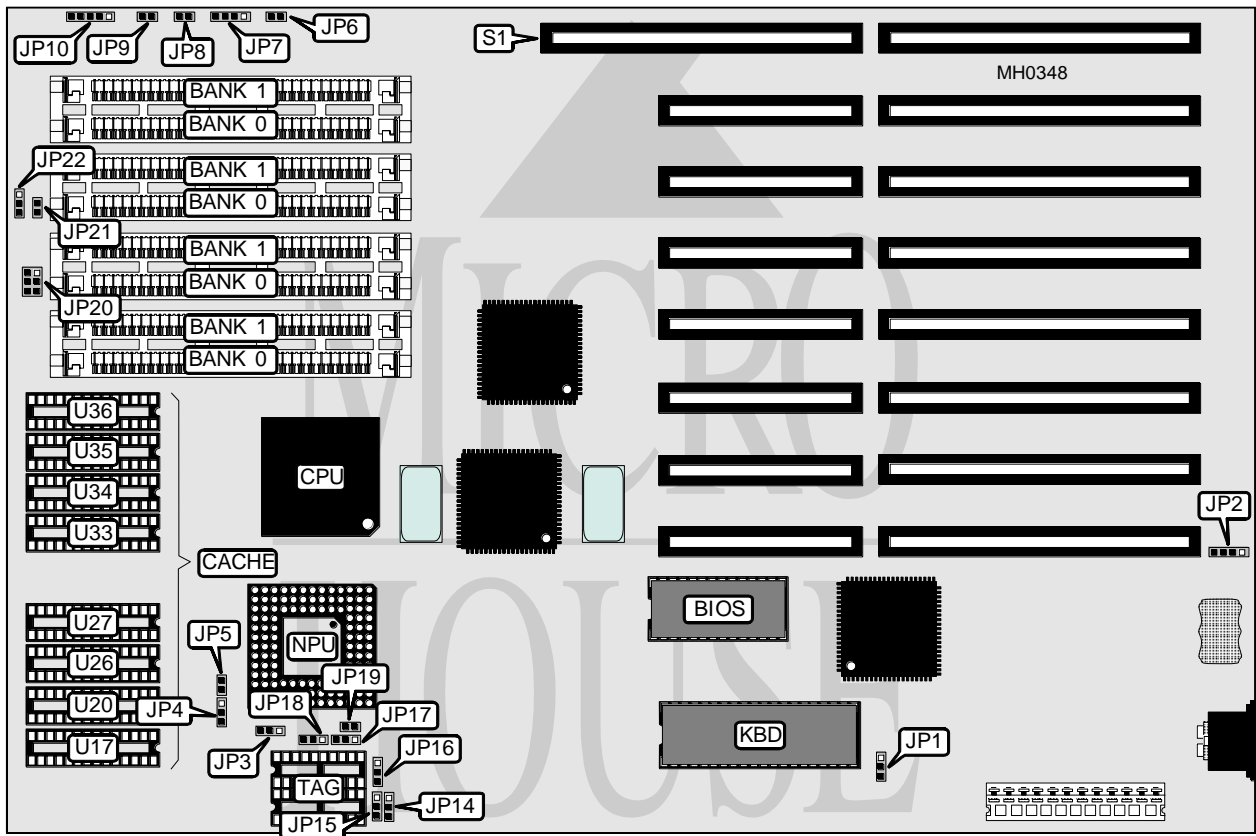


# WISEWARE COMPUTER, INC.

## ETE Q 386-33

<b>Processor</b>	80386DX
<b>Processor Speed</b>	33MHz
<b>Chip Set</b>	ETE Q
<b>Max. Onboard DRAM</b>	32MB
<b>SRAM Cache</b>	32/64/128/256KB
<b>BIOS</b>	AMI
<b>Dimensions</b>	349mm x 250mm
<b>I/O Options</b>	32-bit external memory card slot
<b>NPU Options</b>	80387/3167



CONNECTIONS			
Purpose	Location	Purpose	Location
External battery	JP2	Turbo LED	JP9
Reset switch	JP6	Power LED & keylock	JP10
Speaker	JP7	32-bit external memory card	S1
Turbo switch	JP8		

Continued on next page . . .

**WISEWARE COMPUTER, INC.**  
**ETE Q 386-33**

... continued from previous page

USER CONFIGURABLE SETTINGS		
Function	Jumper	Position
í Monitor type select monochrome	JP1	pins 1 & 2 closed
Monitor type select color	JP1	pins 2 & 3 closed
í NPU type select 80387	JP5	pins 1 & 2 closed
NPU type select 3167	JP5	pins 2 & 3 closed

DRAM CONFIGURATION		
Size	Bank 0	Bank 1
1MB	(4) 256K x 9	NONE
2MB	(4) 256K x 9	(4) 256K x 9
4MB	(4) 1M x 9	NONE
8MB	(4) 1M x 9	(4) 1M x 9
16MB	(4) 4M x 9	NONE
32MB	(4) 4M x 9	(4) 4M x 9

CACHE CONFIGURATION			
Size	Bank 0	Bank 1	TAG
32KB	(4) 8K x 8	NONE	(2) 16K x 4
64KB	(4) 8K x 8	(4) 8K x 8	(2) 16K x 4
128KB	(4) 32K x 8	NONE	(2) 16K x 4
256KB	(4) 32K x 8	(4) 32K x 8	(2) 16K x 4

CACHE JUMPER CONFIGURATION									
Size	JP14	JP15	JP16	JP17	JP18	JP19	JP20	JP21	JP22
32KB	1 & 2	1 & 2	1 & 2	1 & 2	1 & 2	open	2 & 3	open	1 & 2
64KB	1 & 2	1 & 2	1 & 2	1 & 2	2 & 3	closed	1 & 2	open	1 & 2
128KB	2 & 3	2 & 3	1 & 2	1 & 2	2 & 3	closed	4 & 5	closed	1 & 2
256KB	2 & 3	2 & 3	2 & 3	2 & 3	2 & 3	closed	5 & 6	closed	2 & 3

Note: Pins designated should be in the closed position.

NPU CONFIGURATION		
Type	JP3	JP4
Synchronous	pins 1 & 2 closed	pins 1 & 2 closed
Asynchronous	pins 2 & 3 closed	pins 2 & 3 closed