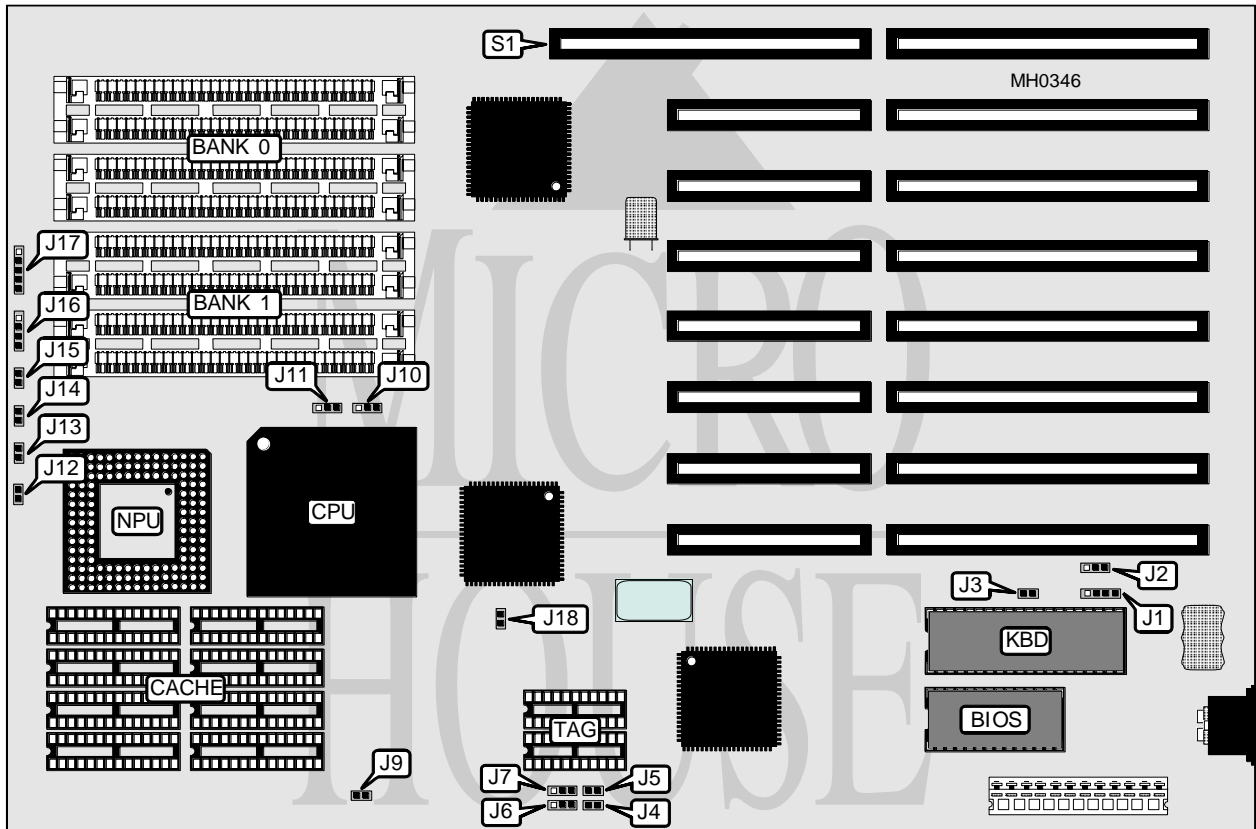


WISEWARE COMPUTER, INC.

ETE Q 486

Processor	80486SX/80486DX
Processor Speed	16/20/25/33MHz
Chip Set	ETE Q
Max. Onboard DRAM	32MB
SRAM Cache	64/256KB
BIOS	AMI
Dimensions	330mm x 220mm
I/O Options	32-bit external memory card slot
NPU Options	4167



CONNECTIONS			
Purpose	Location	Purpose	Location
External battery	J1	Speaker	J16
Reset switch	J13	Power LED & keylock	J17
Turbo switch	J14	32-bit external memory card	S1
Turbo LED	J15		

Continued on next page . . .

WISEWARE COMPUTER, INC.

ETE Q 486

... continued from previous page

USER CONFIGURABLE SETTINGS

Function	Jumper	Position
í CMOS memory normal operation	J2	pins 1 & 2 closed
CMOS memory clear	J2	pins 2 & 3 closed
í Monitor type select color	J3	Closed
Monitor type select monochrome	J3	Open
NPU disabled	J12	Open
NPU enabled	J12	Closed
í CPU speed select iOSC/2	J18	Open
CPU speed select iOSC/1	J18	Closed

DRAM CONFIGURATION

Size	Bank 0	Bank 1	Bank 2	Bank 3
1MB	(4) 256K x 9	NONE	NONE	NONE
2MB	(4) 256K x 9	(4) 256K x 9	NONE	NONE
3MB	(4) 256K x 9	(4) 256K x 9	(4) 256K x 9	NONE
4MB	(4) 1M x 9	NONE	NONE	NONE
6MB	(4) 256K x 9	(4) 256K x 9	(4) 1M x 9	NONE
8MB	(4) 1M x 9	(4) 1M x 9	NONE	NONE
10MB	(4) 256K x 9	(4) 256K x 9	(4) 1M x 9	(4) 1M x 9
12MB	(4) 1M x 9	(4) 1M x 9	(4) 1M x 9	NONE
16MB	(4) 4M x 9	NONE	NONE	NONE
18MB	(4) 256K x 9	(4) 256K x 9	(4) 4M x 9	NONE
24MB	(4) 1M x 9	(4) 1M x 9	(4) 4M x 9	NONE
32MB	(4) 4M x 9	(4) 4M x 9	NONE	NONE
40MB	(4) 1M x 9	(4) 1M x 9	(4) 4M x 9	(4) 4M x 9
48MB	(4) 4M x 9	(4) 4M x 9	(4) 4M x 9	NONE
64MB	(4) 4M x 9	(4) 4M x 9	(4) 4M x 9	(4) 4M x 9

Note: Banks 2 & 3 are used when a 32-bit external memory card is installed at S1.

CACHE CONFIGURATION

Size	Bank 0	TAG
64KB	(8) 8K x 8	(2) 16K x 4
256KB	(8) 32K x 8	(2) 64K x 4

CACHE JUMPER CONFIGURATION

Size	J4	J5	J6	J7	J9
64KB	Open	Open	2 & 3	2 & 3	Open
256KB	Closed	Closed	1 & 2	1 & 2	Closed

Note: Pins designated should be in the closed position.

CPU TYPE CONFIGURATION

Type	J10	J11
80486SX	pins 1 & 2 closed	Open
80486DX	pins 2 & 3 closed	pins 2 & 3 closed