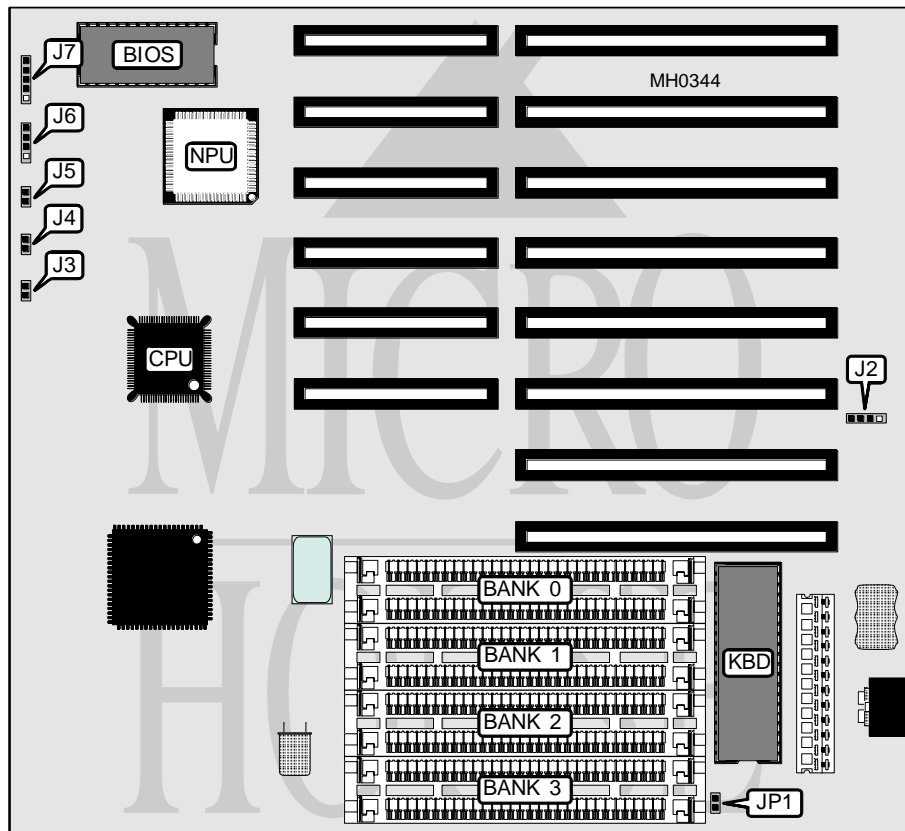


# JOINDATA SYSTEMS, INC.

## G 3 8 6 S S X

<b>Processor</b>	80386SX
<b>Processor Speed</b>	20/25MHz
<b>Chip Set</b>	C & T SCAT
<b>Max. Onboard DRAM</b>	16MB
<b>SRAM Cache</b>	None
<b>BIOS</b>	AMI
<b>Dimensions</b>	240mm x 220mm
<b>I/O Options</b>	None
<b>NPU Options</b>	80387SX



CONNECTIONS			
Purpose	Location	Purpose	Location
Internal battery	J2/pins 2 & 4	Reset switch	J5
External battery	J2/pins 1 & 4	Speaker	J6
Turbo switch	J3	Power LED & keylock	J7
Turbo LED	J4		

Continued on next page . . .

**JOINDATA SYSTEMS, INC.**  
**G 3 8 6 S S X**

... continued from previous page

USER CONFIGURABLE SETTINGS		
Function	Jumper	Position
í CMOS memory normal operation	J2	pins 3 & 4 open
CMOS memory clear	J2	pins 3 & 4 closed
í Monitor type select color	JP1	closed
Monitor type select monochrome	JP1	open

Note: J2/pin 4 is also used as ground for internal or external battery.

DRAM CONFIGURATION				
Size	Bank 0	Bank 1	Bank 2	Bank 3
512KB	(2) 256K x 9	NONE	NONE	NONE
1MB	(2) 256K x 9	(2) 256K x 9	NONE	NONE
1.5MB	(2) 256K x 9	(2) 256K x 9	(2) 256K x 9	NONE
2MB	(2) 256K x 9	(2) 256K x 9	(2) 256K x 9	(2) 256K x 9
2MB	(2) 1M x 9	NONE	NONE	NONE
2.5MB	(2) 256K x 9	(2) 1M x 9	NONE	NONE
3MB	(2) 256K x 9	(2) 256K x 9	(2) 1M x 9	NONE
4MB	(2) 1M x 9	(2) 1M x 9	NONE	NONE
4.5MB	(2) 256K x 9	(2) 1M x 9	(2) 1M x 9	NONE
5MB	(2) 256K x 9	(2) 256K x 9	(2) 1M x 9	(2) 1M x 9
6MB	(2) 1M x 9	(2) 1M x 9	(2) 1M x 9	NONE
6.5MB	(2) 256K x 9	(2) 1M x 9	(2) 1M x 9	(2) 1M x 9
8MB	(2) 1M x 9	(2) 1M x 9	(2) 1M x 9	(2) 1M x 9
9MB	(2) 256K x 9	(2) 256K x 9	(2) 4M x 9	NONE
10MB	(2) 1M x 9	(2) 4M x 9	NONE	NONE
16MB	(2) 4M x 9	(2) 4M x 9	NONE	NONE