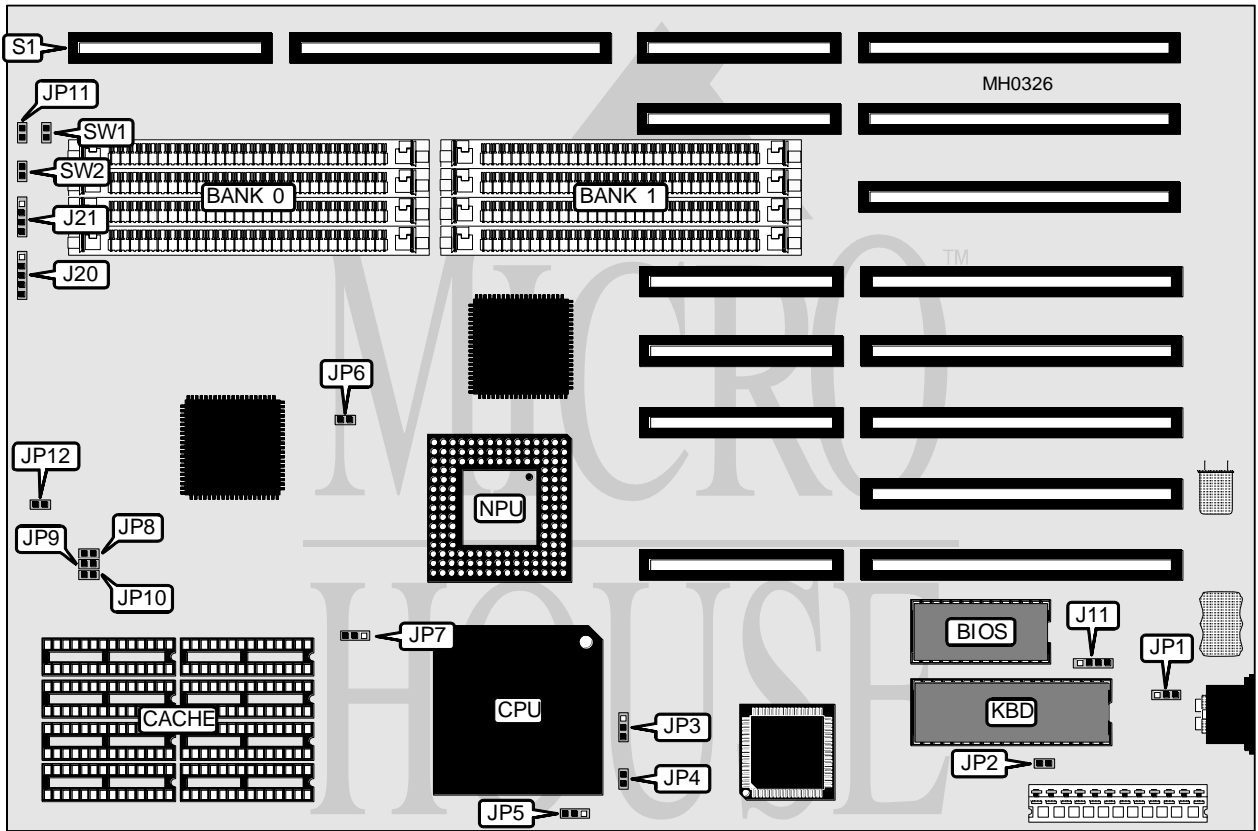


WINCAL TECHNOLOGY CORPORATION

486WB 33/50

Processor	80486SX/80487SX/80486DX
Processor Speed	33/50MHz
Chip Set	OPTI
Max. Onboard DRAM	32MB
Cache	64/256KB
BIOS	AMI
Dimensions	330mm x 220mm
I/O Options	32-bit external memory card
NPU Options	4167



CONNECTIONS			
Purpose	Location	Purpose	Location
External battery	J10	32-bit external memory card	S1
Power LED & keylock	J20	Reset switch	SW1
Speaker	J21	Turbo switch	SW2
Turbo LED	JP11		

Continued on next page . . .

WINCAL TECHNOLOGY CORPORATION

486WB 33/50

... continued from previous page

USER CONFIGURABLE SETTINGS

Function	Jumper	Position
í CMOS memory normal operation	JP1	pins 2 & 3 closed
CMOS memory clear	JP1	pins 1 & 2 closed
í Monitor type select monochrome	JP2	Open
Monitor type select color	JP2	Closed
í Bus speed select ATCLK/4	JP6	Open
Bus speed select ATCLK/6	JP6	Closed
í CPU speed select OSC/2	JP7	pins 2 & 3 closed
CPU speed select OSC/1	JP7	pins 1 & 2 closed

DRAM CONFIGURATION

Size	Bank 0	Bank 1
1MB	(4) 256K x 9	NONE
2MB	(4) 256K x 9	(4) 256K x 9
4MB	(4) 1M x 9	NONE
5MB	(4) 1M x 9	(4) 256K x 9
8MB	(4) 1M x 9	(4) 1M x 9
16MB	(4) 4M x 9	NONE
20MB	(4) 4M x 9	(4) 1M x 9
32MB	(4) 4M x 9	(4) 4M x 9

CACHE CONFIGURATION

Size	Bank 0
64KB	(8) 8K x 8
256KB	(8) 32K x 8

CACHE JUMPER CONFIGURATION

Size	JP8	JP9	JP10	JP12
64KB	Open	Open	Open	Open
256KB	Open	Closed	Closed	Closed

CPU TYPE CONFIGURATION

Type	JP3	JP4	JP5
80486SX	Open	Open	pins 2 & 3 closed
80487SX	pins 1 & 2 closed	Closed	pins 1 & 2 closed
80486DX	pins 2 & 3 closed	Closed	pins 1 & 2 closed