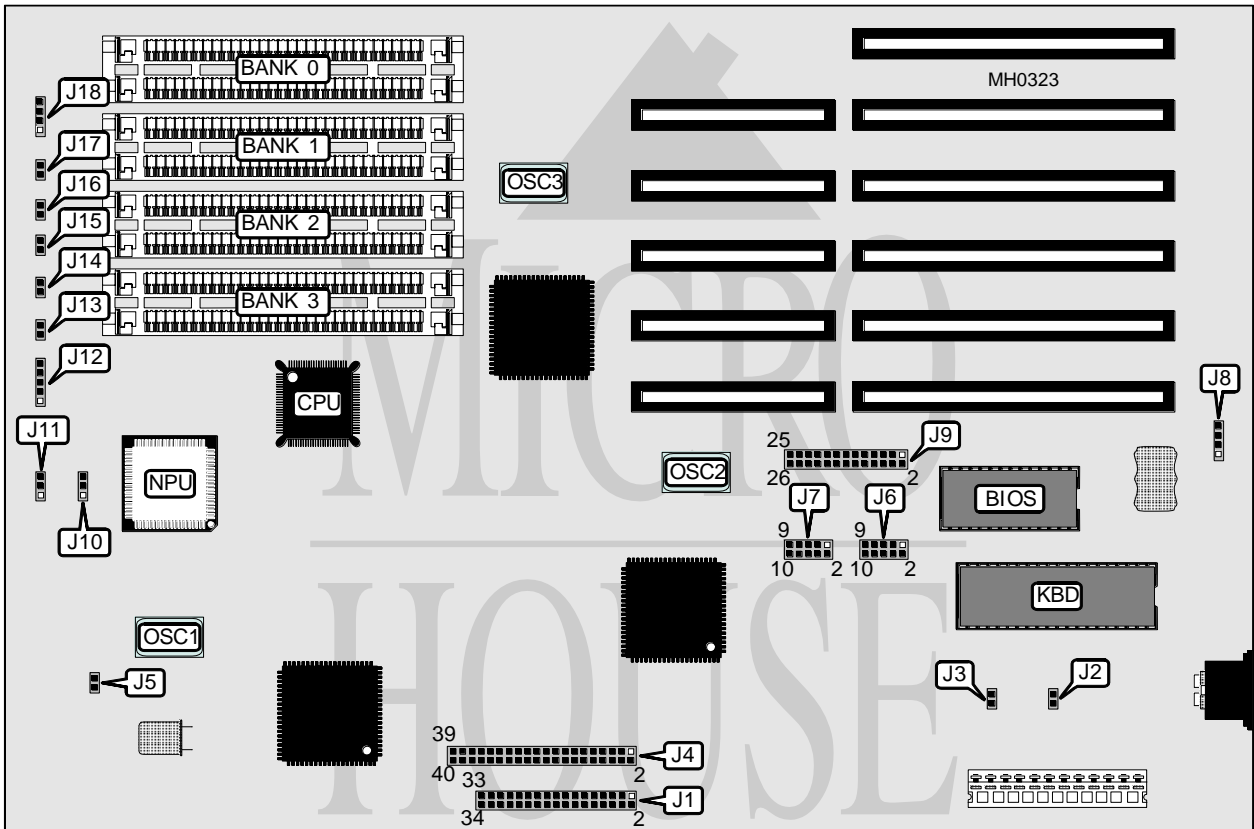


# CAF TECHNOLOGY, INC.

## CAF A341

<b>Processor</b>	80386SX
<b>Processor Speed</b>	16/20MHz
<b>Chip Set</b>	WD
<b>Max. Onboard DRAM</b>	32MB
<b>Cache</b>	None
<b>BIOS</b>	AMI
<b>Dimensions</b>	330mm x 218mm
<b>NPU Options</b>	Floppy drive interface, IDE interface, parallel port, serial ports (2) 80387SX



CONNECTIONS			
Purpose	Location	Purpose	Location
Floppy drive interface	J1	Power LED & keylock	J12
IDE interface	J4	Reset switch	J13
Serial port (COM1)	J6	IDE interface LED	J14
Serial port (COM2)	J7	Turbo LED	J15
External battery	J8	Turbo switch	J16
Parallel port	J9	External speaker	J18

Continued on next page . . .

## CAF TECHNOLOGY, INC.

## CAF A341

... continued from previous page

## USER CONFIGURABLE SETTINGS

Function	Jumper	Position
í Monitor type select monochrome	J2	pins 1 & 2 closed
Monitor type select color	J2	pins 2 & 3 closed
í Parallel port select unidirectional (AT)	J3	pins 1 & 2 closed
Parallel port select bi-directional (PS/2)	J3	pins 2 & 3 closed
í CMOS memory normal operation	J5	Open
CMOS memory clear	J5	Closed
í Audio output select internal buzzer	J17	Closed
Audio output select external speaker	J17	Open

## DRAM CONFIGURATION

Size	Bank 0	Bank 1	Bank 2	Bank 3
1MB	(2) 256K x 9	(2) 256K x 9	NONE	NONE
2MB	(2) 256K x 9	(2) 256K x 9	(2) 256K x 9	(2) 256K x 9
2MB	(2) 1M x 9	NONE	NONE	NONE
3MB	(2) 256K x 9	(2) 256K x 9	(2) 1M x 9	NONE
4MB	(2) 1M x 9	(2) 1M x 9	NONE	NONE
5MB	(2) 256K x 9	(2) 256K x 9	(2) 1M x 9	(2) 1M x 9
6MB	(2) 1M x 9	(2) 1M x 9	(2) 1M x 9	NONE
8MB	(2) 1M x 9	(2) 1M x 9	(2) 1M x 9	(2) 1M x 9
9MB	(2) 256K x 9	(2) 256K x 9	(2) 4M x 9	NONE
10MB	(2) 1M x 9	(2) 4M x 9	NONE	NONE
11MB	(2) 256K x 9	(2) 256K x 9	(2) 1M x 9	(2) 4M x 9
12MB	(2) 1M x 9	(2) 1M x 9	(2) 4M x 9	NONE
14MB	(2) 1M x 9	(2) 1M x 9	(2) 1M x 9	(2) 4M x 9
16MB	(2) 4M x 9	(2) 4M x 9	NONE	NONE
18MB	(2) 4M x 9	(2) 4M x 9	(2) 1M x 9	NONE
24MB	(2) 4M x 9	(2) 4M x 9	(2) 4M x 9	NONE
32MB	(2) 4M x 9	(2) 4M x 9	(2) 4M x 9	(2) 4M x 9

## NPU CONFIGURATION

Type	J10	J11
NPU mode select synchronous with CPU	pins 1 & 2 closed	pins 1 & 2 closed
NPU mode select synchronous oscillator installed at OSC1	pins 2 & 3 closed	pins 2 & 3 closed