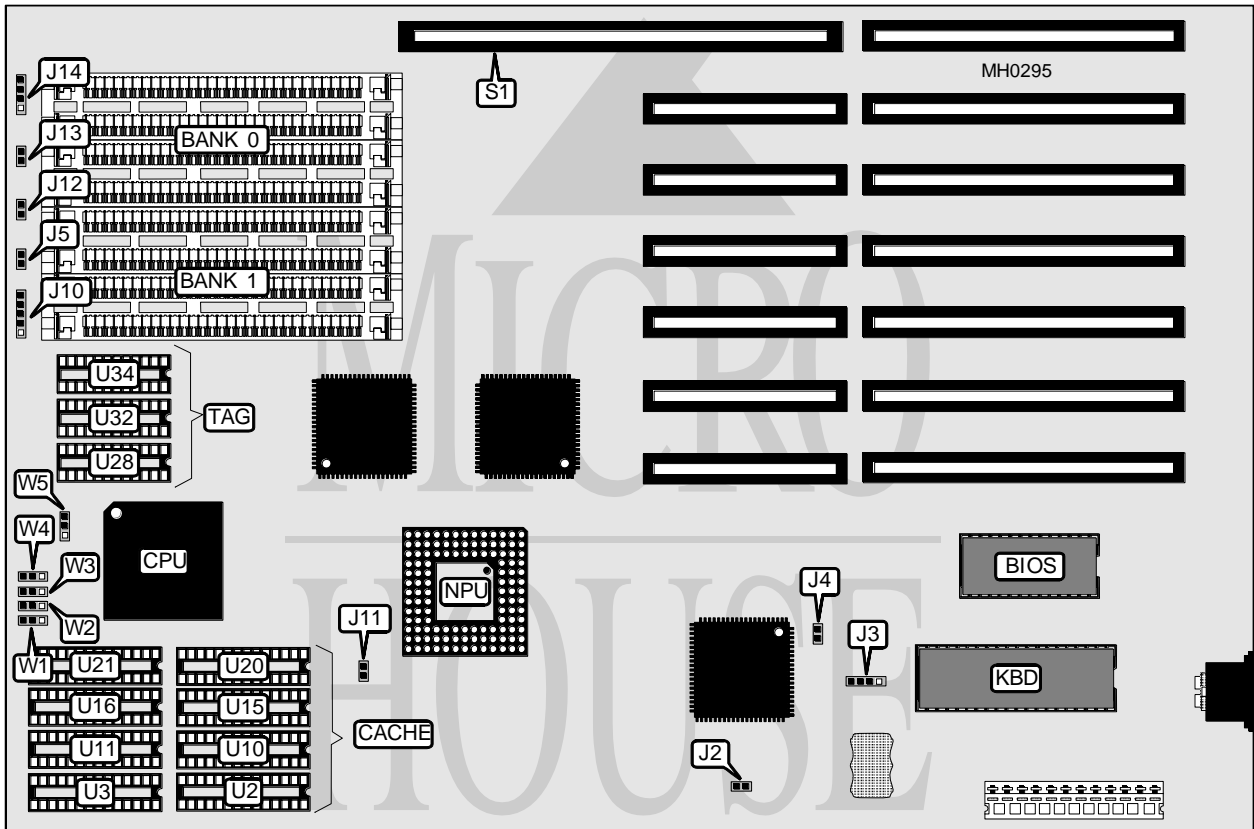


BEC COMPUTER ENTERPRISES

SPM 386-33C

Processor	80386DX
Processor Speed	33MHz
Chip Set	C & T
Max. Onboard DRAM	32MB
Cache	64/128/256KB
BIOS	AMI
Dimensions	330mm x 218mm
I/O Options	32-bit external memory card slot
NPU Options	80387/3167



CONNECTIONS			
Purpose	Location	Purpose	Location
External battery	J3	Turbo LED	J13
Reset switch	J5	Speaker	J14
Power LED & Keylock	J10	32-bit external memory card	S1
Turbo switch	J12		

Continued on next page . . .

BEC COMPUTER ENTERPRISES

SPM 386-33C

... continued from previous page

USER CONFIGURABLE SETTINGS		
Function	Jumper	Position
í CMOS memory normal operation	J2	Open
CMOS memory clear	J2	Closed
í Monitor type select monochrome	J4	Open
Monitor type select color	J4	Closed
í NPU mode select synchronous with CPU	J11	Open
NPU mode select asynchronous with CPU	J11	Closed

DRAM CONFIGURATION		
Size	Bank 0	Bank 1
1MB	(4) 256K x 9	NONE
2MB	(4) 256K x 9	(4) 256K x 9
4MB	(4) 1M x 9	NONE
8MB	(4) 1M x 9	(4) 1M x 9
16MB	(4) 4M x 9	NONE
32MB	(4) 4M x 9	(4) 4M x 9

CACHE CONFIGURATION				
Size	Bank 0	Bank 1	TAG (U28 & U32)	TAG (U34)
64KB	(4) 8K x 8	(4) 8K x 8	(2) 16K x 4	NONE
128KB	(4) 32K x 8	NONE	(2) 16K x 4	NONE
256KB	(4) 32K x 8	(4) 32K x 8	(2) 16K x 4	(1) 16K x 4

Note: Bank 0 = U2, U3, U15, & U21. Bank 1 = U10, U11, U16, & U20.

CACHE JUMPER CONFIGURATION					
Size	W1	W2	W3	W4	W5
64KB	pins 2 & 3 closed	pins 2 & 3 closed	pins 2 & 3 closed	pins 2 & 3 closed	Open
128KB	Open	pins 1 & 2 closed	pins 1 & 2 closed	pins 1 & 2 closed	pins 2 & 3 closed
256KB	pins 1 & 2 closed	pins 1 & 2 closed	pins 1 & 2 closed	pins 1 & 2 closed	pins 1 & 2 closed