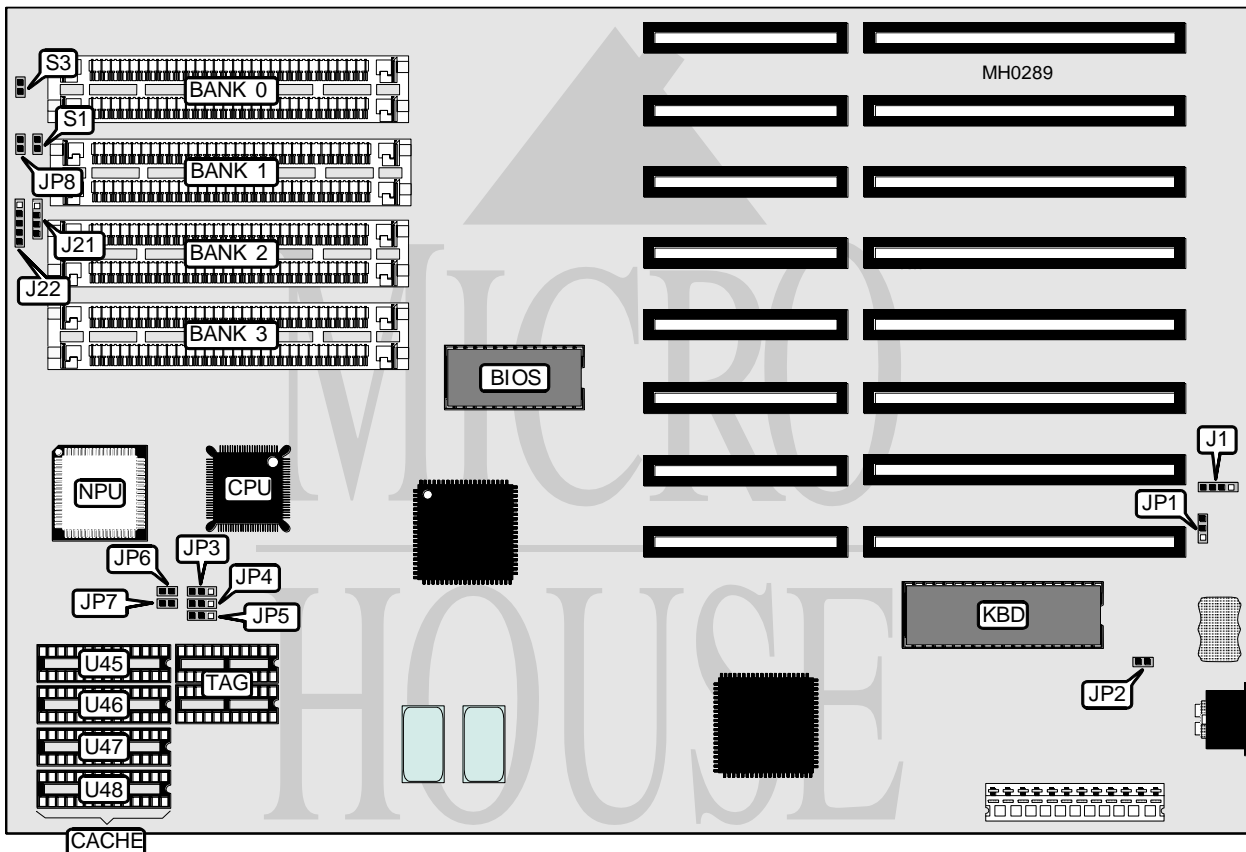


NOVACOR, INC.

OPTIMUM 386SX-16/20/25 REV. B

Processor	80386SX
Processor Speed	16/20/25MHz
Chip Set	OPTI
Max. Onboard DRAM	16MB
Cache	16/32/64KB
BIOS	AMI/MR
Dimensions	330mm x 218mm
I/O Options	None
NPU Options	80387SX



CONNECTIONS			
Purpose	Location	Purpose	Location
External battery	J1	Turbo LED	JP8
Speaker	J21	Reset switch	S1
Power LED & keylock	J22	Turbo switch	S3

Continued on next page . . .

NOVACOR, INC.

OPTIMUM 386SX-16/20/25 REV. B

... continued from previous page

USER CONFIGURABLE SETTINGS		
Function	Jumper	Position
í CMOS memory normal operation	JP1	pins 2 & 3 closed
CMOS memory clear	JP1	pins 1 & 2 closed
í Monitor type select color (AMI BIOS)	JP2	Closed
Monitor type select monochrome (AMI BIOS)	JP2	Open
í Password enabled (MR BIOS)	JP2	Closed
Password disabled (MR BIOS)	JP2	Open

DRAM CONFIGURATION				
Size	Bank 0	Bank 1	Bank 2	Bank 3
1MB	(2) 256K x 9	(2) 256K x 9	NONE	NONE
2MB	(2) 256K x 9	(2) 256K x 9	(2) 256K x 9	(2) 256K x 9
2MB	(2) 1M x 9	NONE	NONE	NONE
3MB	(2) 256K x 9	(2) 256K x 9	(2) 1M x 9	NONE
4MB	(2) 1M x 9	(2) 1M x 9	NONE	NONE
5MB	(2) 256K x 9	(2) 256K x 9	(2) 1M x 9	(2) 1M x 9
6MB	(2) 1M x 9	(2) 1M x 9	(2) 1M x 9	NONE
8MB	(2) 1M x 9	(2) 1M x 9	(2) 1M x 9	(2) 1M x 9
9MB	(2) 256K x 9	(2) 256K x 9	(2) 4M x 9	NONE
10MB	(2) 1M x 9	(2) 4M x 9	NONE	NONE
12MB	(2) 1M x 9	(2) 1M x 9	(2) 4M x 9	NONE
16MB	(2) 4M x 9	(2) 4M x 9	NONE	NONE

SRAM CONFIGURATION			
Size	Bank 0	Bank 1	TAG
16KB	(2) 8K x 8	NONE	(2) 4K x 4
32KB	(2) 8K x 8	(2) 8K x 8	(2) 16K x 4
64KB	(2) 32K x 8	NONE	(2) 16K x 4

SRAM JUMPER CONFIGURATION					
Size	JP3	JP4	JP5	JP6	JP7
16KB	1 & 2	1 & 2	1 & 2	Open	Open
32KB	2 & 3	1 & 2	1 & 2	Closed	Open
64KB	2 & 3	2 & 3	2 & 3	Open	Closed

Note: Pins designated should be in the closed position.