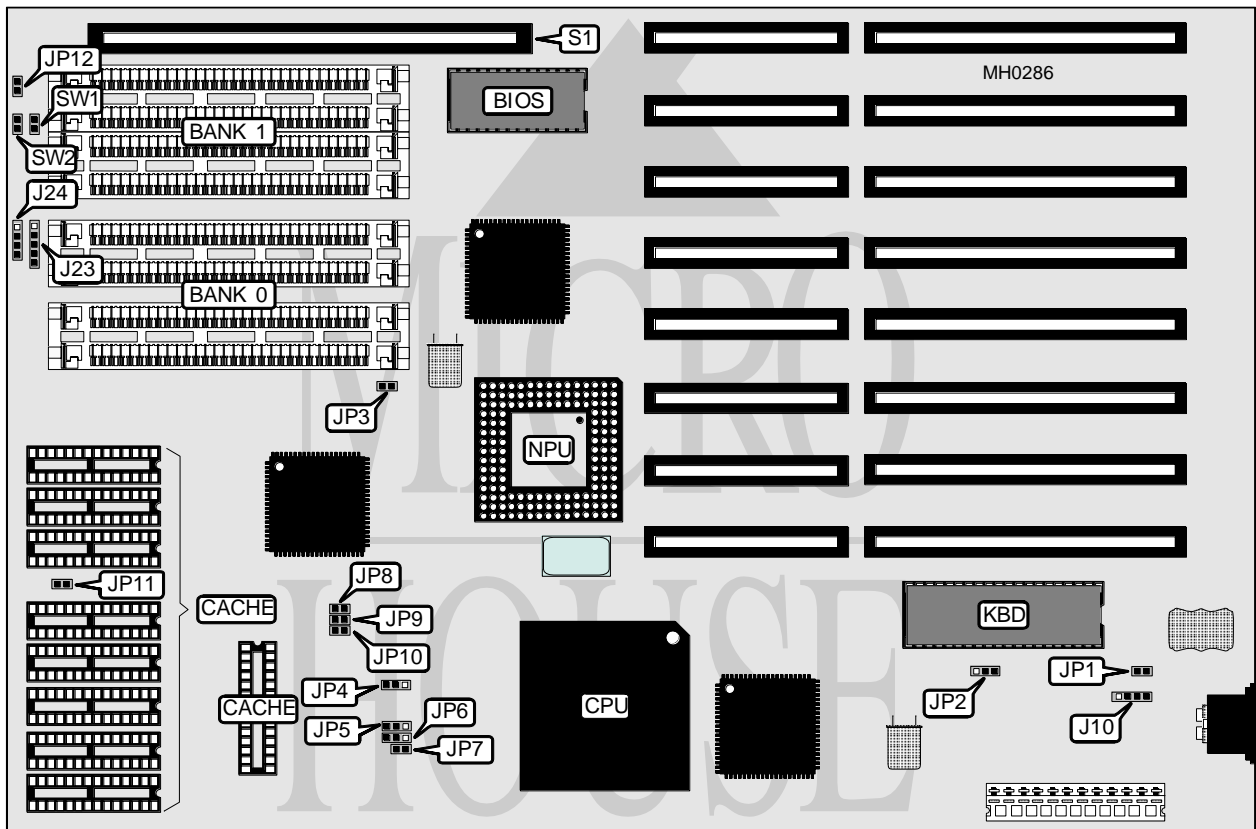


## DASH COMPUTER, INC.

## DC-486SX 25/33/50

Processor	80486SX/80487SX/80486DX
Processor Speed	20/25/33/50MHz
Chip Set	OPTI
Max. Onboard DRAM	32MB
Cache	64/256KB
BIOS	AMI
Dimensions	330mm x 218mm
I/O Options	32-bit external memory card slot
NPU Options	4167



CONNECTIONS			
Purpose	Location	Purpose	Location
External battery	J10	32-bit external memory card	S1
Power LED & keylock	J23	Reset switch	SW1
Speaker	J24	Turbo switch	SW2
Turbo LED	JP12		

Continued on next page . . .

**DASH COMPUTER, INC.****DC-486SX 25/33/50**

... continued from previous page

USER CONFIGURABLE SETTINGS		
Function	Jumper	Position
í Monitor type select color	JP1	Closed
Monitor type select monochrome	JP1	Open
í CMOS memory normal operation	JP2	pins 2 & 3 closed
CMOS memory clear	JP2	pins 1 & 2 closed
í Bus speed select ATCLK/6	JP3	Closed
Bus speed select ATCLK/4	JP3	Open
í CPU speed select OSC/2	JP4	pins 2 & 3 closed
CPU speed select OSC/1	JP4	pins 1 & 2 closed

DRAM CONFIGURATION				
Size	Bank 0	Bank 1	Bank 2	Bank 3
4MB	(4) 1M x 9	NONE	NONE	NONE
8MB	(4) 1M x 9	(4) 1M x 9	NONE	NONE
12MB	(4) 1M x 9	(4) 1M x 9	(4) 1M x 9	NONE
16MB	(4) 1M x 9	(4) 1M x 9	(4) 1M x 9	(4) 1M x 9
16MB	(4) 4M x 9	NONE	NONE	NONE
20MB	(4) 1M x 9	(4) 4M x 9	NONE	NONE
24MB	(4) 1M x 9	(4) 1M x 9	(4) 4M x 9	NONE
28MB	(4) 1M x 9	(4) 1M x 9	(4) 1M x 9	(4) 4M x 9
32MB	(4) 4M x 9	(4) 4M x 9	NONE	NONE
36MB	(4) 1M x 9	(4) 4M x 9	(4) 4M x 9	NONE
40MB	(4) 1M x 9	(4) 1M x 9	(4) 4M x 9	(4) 4M x 9
48MB	(4) 4M x 9	(4) 4M x 9	(4) 4M x 9	NONE
52MB	(4) 1M x 9	(4) 4M x 9	(4) 4M x 9	(4) 4M x 9
64MB	(4) 4M x 9	(4) 4M x 9	(4) 4M x 9	(4) 4M x 9
Note: Banks 2 & 3 are used when a 32-bit external memory card is installed at S1.				

CACHE CONFIGURATION	
Size	Bank 0
64KB	(9) 8K x 8
256KB	(9) 32K x 8

CACHE JUMPER CONFIGURATION				
Size	JP8	JP9	JP10	JP11
64KB	Open	Open	Open	Open
256KB	Closed	Closed	Closed	Closed

CPU TYPE CONFIGURATION			
Type	JP5	JP6	JP7
80486SX	Open	pins 2 & 3 closed	Closed
80487SX	pins 1 & 2 closed	pins 1 & 2 closed	Closed
80486DX	pins 2 & 3 closed	pins 1 & 2 closed	Closed