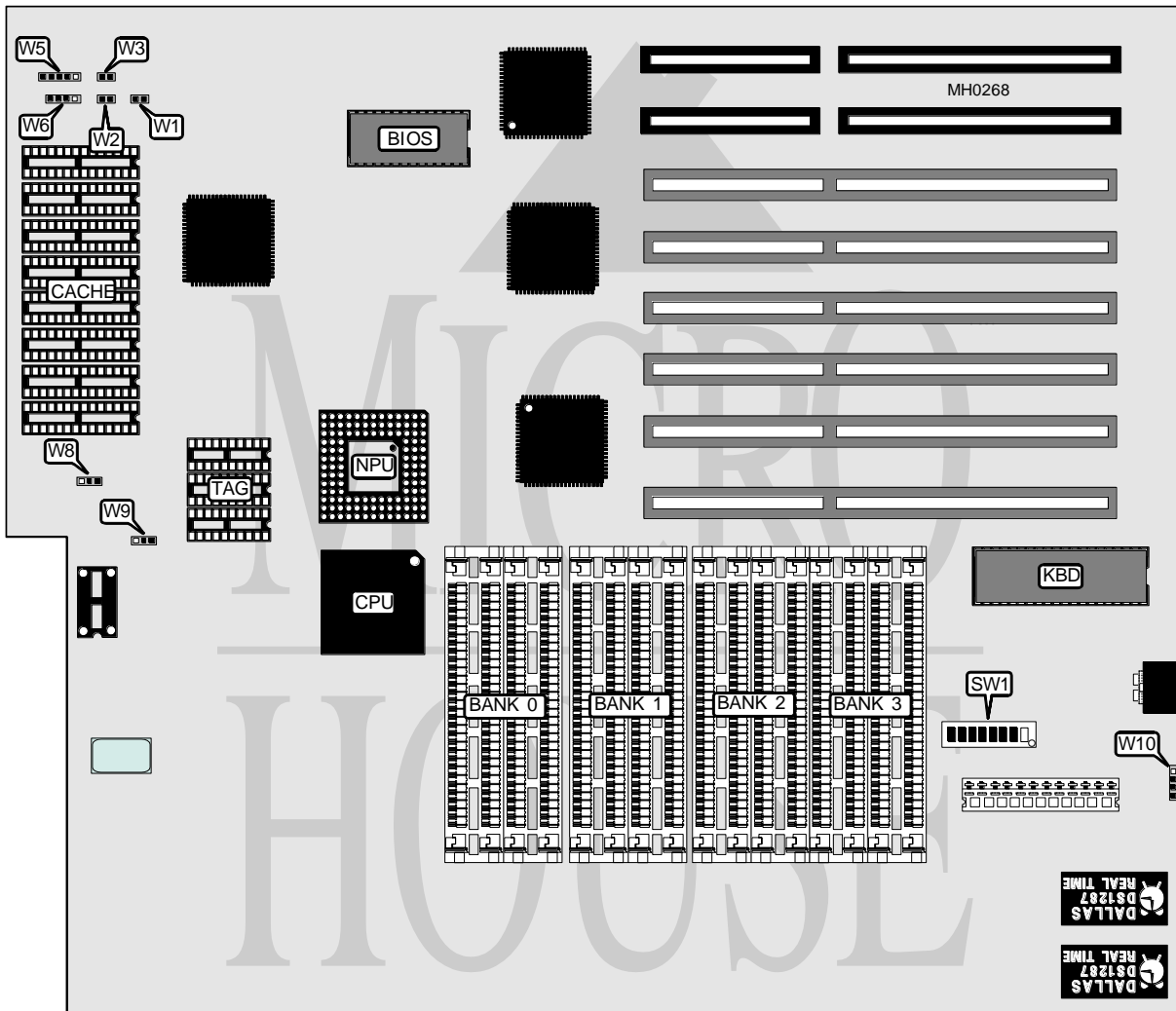


FREE COMPUTER TECHNOLOGY, INC.

80386 EISA

| | |
|--------------------------|---------------|
| Processor | 80386DX |
| Processor Speed | 33MHz |
| Chip Set | Intel |
| Max. Onboard DRAM | 16MB |
| Cache | 64/256KB |
| BIOS | AMI/Award |
| Dimensions | 305mm x 355mm |
| I/O Options | None |
| NPU Options | 80387/3167 |



| CONNECTIONS | | | |
|--------------|----------|---------------------|----------|
| Purpose | Location | Purpose | Location |
| Reset switch | W1 | Power LED & Keylock | W5 |
| Turbo LED | W2 | Speaker | W6 |
| Turbo switch | W3 | External battery | W10 |

Continued on next page . . .

FREE COMPUTER TECHNOLOGY, INC.

80386 EISA

... continued from previous page

| USER CONFIGURABLE SETTINGS | | |
|---|---------------|----------|
| Function | Jumper/Switch | Position |
| í NPU disabled | SW1/5 | Off |
| NPU enabled | SW1/5 | On |
| í NPU mode select asynchronous with CPU | SW1/6 | On |
| NPU mode select synchronous with CPU | SW1/6 | Off |
| í Factory configured - do not alter | W46 | Closed |

| DRAM CONFIGURATION | | | | |
|--------------------|--------------|--------------|--------------|--------------|
| Size | Bank 0 | Bank 1 | Bank 2 | Bank 3 |
| 1MB | (4) 256K x 9 | NONE | NONE | NONE |
| 2MB | (4) 256K x 9 | (4) 256K x 9 | NONE | NONE |
| 3MB | (4) 256K x 9 | (4) 256K x 9 | (4) 256K x 9 | NONE |
| 4MB | (4) 256K x 9 | (4) 256K x 9 | (4) 256K x 9 | (4) 256K x 9 |
| 4MB | (4) 1M x 9 | NONE | NONE | NONE |
| 5MB | (4) 256K x 9 | (4) 1M x 9 | NONE | NONE |
| 6MB | (4) 256K x 9 | (4) 256K x 9 | (4) 1M x 9 | NONE |
| 7MB | (4) 256K x 9 | (4) 256K x 9 | (4) 256K x 9 | (4) 1M x 9 |
| 8MB | (4) 1M x 9 | (4) 1M x 9 | NONE | NONE |
| 9MB | (4) 256K x 9 | (4) 1M x 9 | (4) 1M x 9 | NONE |
| 10MB | (4) 256K x 9 | (4) 256K x 9 | (4) 1M x 9 | (4) 1M x 9 |
| 12MB | (4) 1M x 9 | (4) 1M x 9 | (4) 1M x 9 | NONE |
| 13MB | (4) 256K x 9 | (4) 1M x 9 | (4) 1M x 9 | (4) 1M x 9 |
| 16MB | (4) 1M x 9 | (4) 1M x 9 | (4) 1M x 9 | (4) 1M x 9 |

| DRAM JUMPER CONFIGURATION | | | | |
|---------------------------|-------|-------|-------|-------|
| Size | SW1/1 | SW1/2 | SW1/3 | SW1/4 |
| 1MB | Off | Off | Off | Off |
| 2MB | On | Off | Off | Off |
| 3MB | Off | On | Off | Off |
| 4MB | On | On | Off | Off |
| 4MB | Off | Off | On | Off |
| 5MB | Off | Off | On | On |
| 6MB | Off | On | Off | On |
| 7MB | On | Off | Off | On |
| 8MB | On | Off | On | Off |
| 9MB | Off | On | On | On |
| 10MB | On | On | Off | On |
| 12MB | Off | On | On | Off |
| 13MB | On | On | On | On |
| 16MB | On | On | On | Off |

| CACHE CONFIGURATION | | |
|---------------------|-------------|-------------|
| Size | Bank 0 | TAG |
| 64KB | (8) 8K x 8 | (3) 8K x 8 |
| 256KB | (8) 32K x 8 | (3) 32K x 8 |

Continued on next page ...

FREE COMPUTER TECHNOLOGY, INC.

80386 EISA

... continued from previous page

| CACHE JUMPER CONFIGURATION | | |
|----------------------------|-------------------|-------------------|
| Size | W8 | W9 |
| 64KB | pins 2 & 3 closed | pins 1 & 2 closed |
| 256KB | pins 1 & 2 closed | pins 2 & 3 closed |