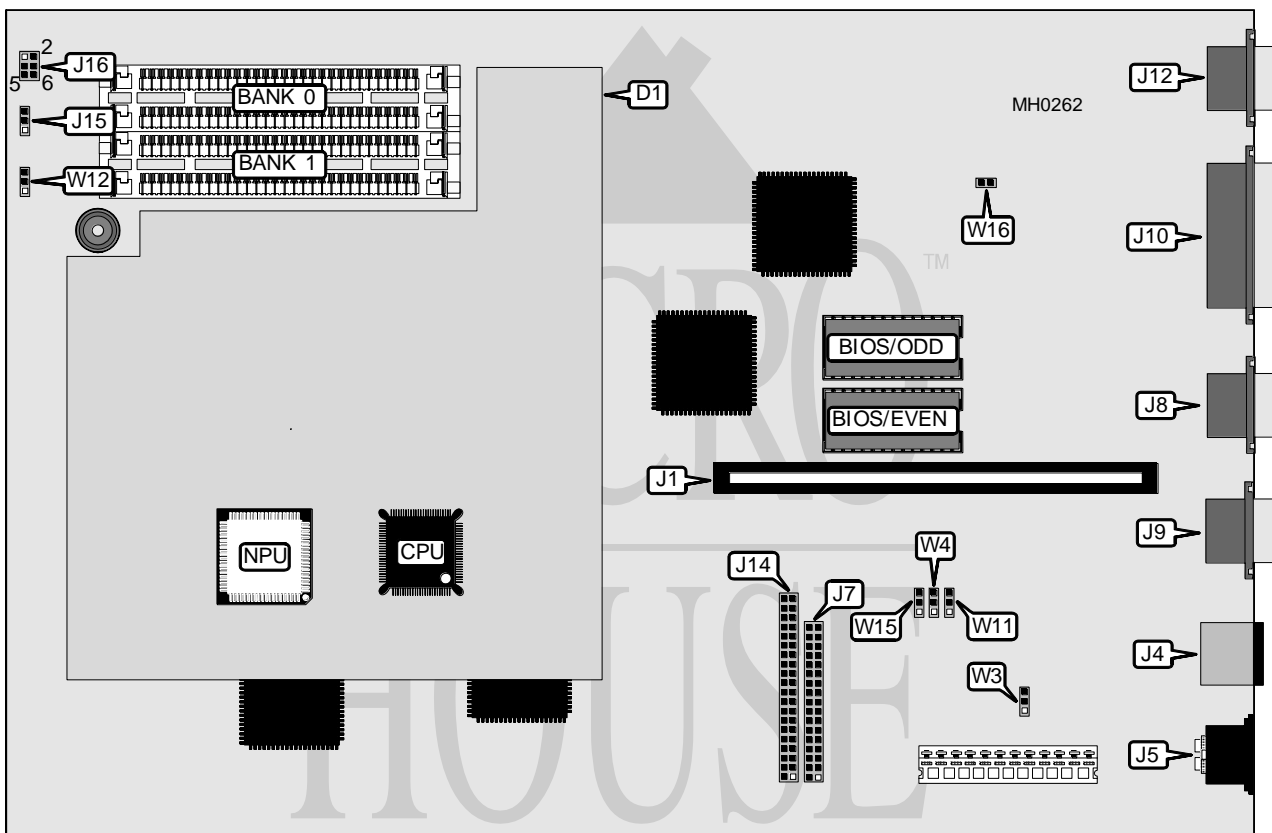


PACKARD BELL 386SX (FORCE 386SX/AXCEL 386SX/ PACK-MATE 386SX/LEGEND 386SX)

Processor	80386SX
Processor Speed	16MHz
Chip Set	Faraday
Max. Onboard DRAM	4MB
Cache	None
BIOS	Phoenix
Dimensions	330mm x 218mm
I/O Options	Parallel port, serial ports (2), PS/2 mouse port, floppy drive interface, IDE interface, VGA interface
NPU Options	80387SX



Continued on next page . . .

PACKARD BELL
386SX (FORCE 386SX/AXCEL 386SX/
PACK-MATE 386SX/LEGEND 386SX)

... continued from previous page

CONNECTIONS			
Purpose	Location	Purpose	Location
CPU daughterboard	D1	Parallel port (LPT1)	J10
Expansion slot card	J1	VGA interface	J12
PS/2 mouse port	J4	IDE interface	J14
Keyboard	J5	Keylock	J15
Floppy drive interface	J7	Reset switch	J16 pins 1 & 2
Serial port 2	J8	IDE LED	J16 pins 3 & 4
Serial port 1	J9	Keyswitch	J16 pins 5 & 6

USER CONFIGURABLE SETTINGS		
Function	Jumper	Position
í Monitor type select color	W3	pins 2 & 3 closed
Monitor type select monochrome	W3	pins 1 & 2 closed
í Floppy drive IRQ6 enabled	W4	pins 2 & 3 closed
Floppy drive IRQ6 disabled	W4	pins 1 & 2 closed
í VGA video IRQ9 enabled	W11	pins 2 & 3 closed
VGA video IRQ9 disabled	W11	pins 1 & 2 closed
í IDE access LED enabled	W12	pins 2 & 3 closed
IDE access LED disabled	W12	pins 1 & 2 closed
í Factory configured - do not alter	W15	N/A
í PS/2 mouse IRQ12 enabled	W16	closed
PS/2 mouse IRQ12 disabled	W16	open

DRAM CONFIGURATION		
Size	Bank 0	Bank 1
512KB	(2) 256K x 9	NONE
1MB	(2) 256K x 9	(2) 256K x 9
2MB	(2) 1M x 9	NONE
2.5MB	(2) 256K x 9	(2) 1M x 9
4MB	(2) 1M x 9	(2) 1M x 9