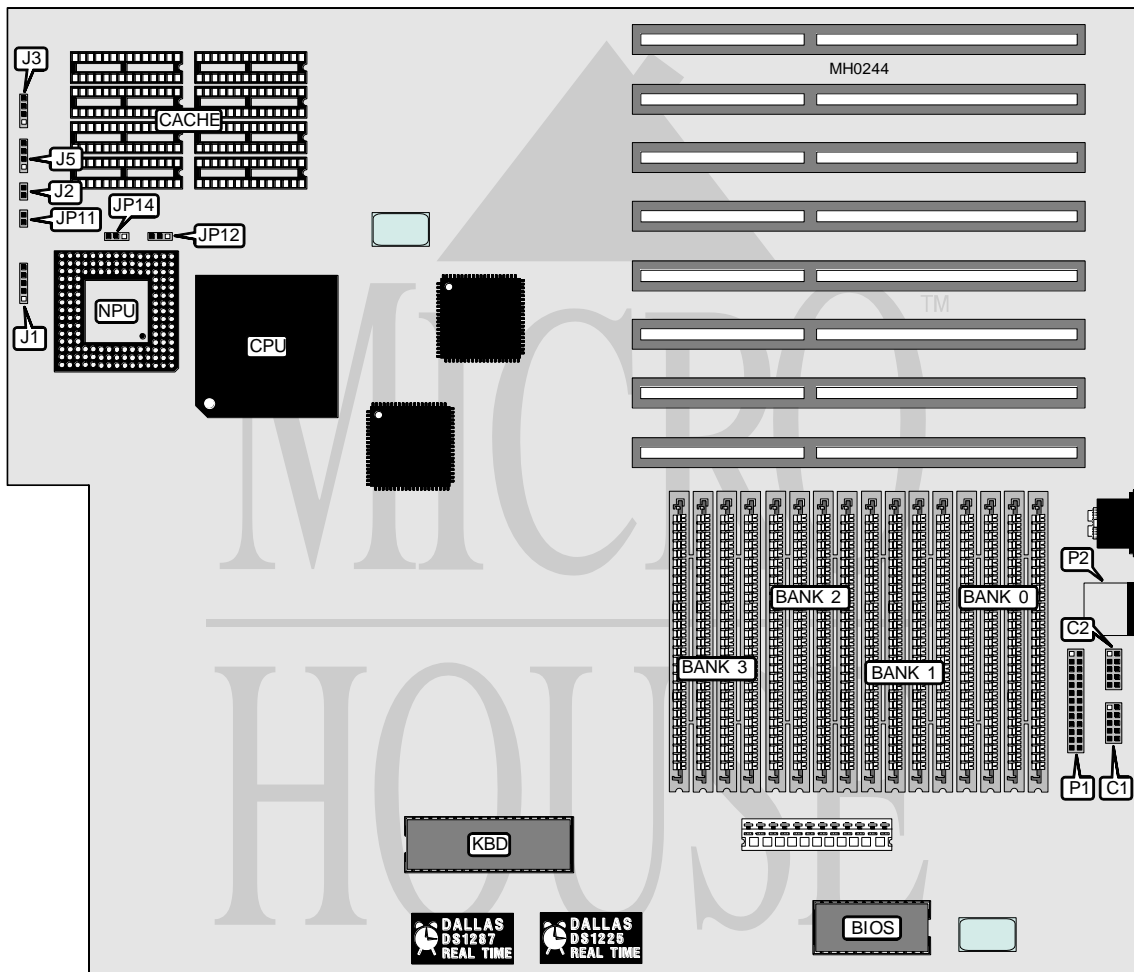


# ADVANCED INTEGRATION RESEARCH, INC.

## 486 EL EISA

<b>Processor</b>	80486DX
<b>Processor Speed</b>	25/33/50MHz
<b>Chip Set</b>	Intel
<b>Max. Onboard DRAM</b>	64MB
<b>Cache</b>	64/256KB
<b>BIOS</b>	AMI/Phoenix
<b>Dimensions</b>	355mm x 304mm
<b>I/O Options</b>	Bus mouse port, serial ports (2), parallel port
<b>NPU Options</b>	4167



CONNECTIONS			
Purpose	Location	Purpose	Location
Serial port 1	C1	Speaker	J5
Serial port 2	C2	Turbo switch	JP11
Power LED & keylock	J1	Parallel port	P1
Reset switch	J2	Bus mouse port	P2
Turbo LED	J3 pins 1 & 2		

Continued on next page . . .

# ADVANCED INTEGRATION RESEARCH, INC.

## 486EL EISA

... continued from previous page

DRAM CONFIGURATION				
Size	Bank 0	Bank 1	Bank 2	Bank 3
1MB	(4) 256K x 9	NONE	NONE	NONE
2MB	(4) 256K x 9	(4) 256K x 9	NONE	NONE
3MB	(4) 256K x 9	(4) 256K x 9	(4) 256K x 9	NONE
4MB	(4) 256K x 9	(4) 256K x 9	(4) 256K x 9	(4) 256K x 9
4MB	(4) 1M x 9	NONE	NONE	NONE
8MB	(4) 1M x 9	(4) 1M x 9	NONE	NONE
9MB	(4) 256K x 9	(4) 1M x 9	(4) 1M x 9	NONE
10MB	(4) 256K x 9	(4) 256K x 9	(4) 1M x 9	(4) 1M x 9
12MB	(4) 1M x 9	(4) 1M x 9	(4) 1M x 9	NONE
13MB	(4) 256K x 9	(4) 1M x 9	(4) 1M x 9	(4) 1M x 9
16MB	(4) 1M x 9	(4) 1M x 9	(4) 1M x 9	(4) 1M x 9
16MB	(4) 4M x 9	NONE	NONE	NONE
17MB	(4) 256K x 9	(4) 4M x 9	NONE	NONE
18MB	(4) 256K x 9	(4) 256K x 9	(4) 4M x 9	NONE
19MB	(4) 256K x 9	(4) 256K x 9	(4) 256K x 9	(4) 4M x 9
20MB	(4) 1M x 9	(4) 4M x 9	NONE	NONE
21MB	(4) 256K x 9	(4) 1M x 9	(4) 4M x 9	NONE
22MB	(4) 256K x 9	(4) 256K x 9	(4) 1M x 9	(4) 4M x 9
24MB	(4) 1M x 9	(4) 1M x 9	(4) 4M x 9	NONE
25MB	(4) 256K x 9	(4) 1M x 9	(4) 1M x 9	(4) 4M x 9
28MB	(4) 1M x 9	(4) 1M x 9	(4) 1M x 9	(4) 4M x 9
32MB	(4) 4M x 9	(4) 4M x 9	NONE	NONE
33MB	(4) 256K x 9	(4) 4M x 9	(4) 4M x 9	NONE
34MB	(4) 256K x 9	(4) 256K x 9	(4) 4M x 9	(4) 4M x 9
36MB	(4) 1M x 9	(4) 4M x 9	(4) 4M x 9	NONE
40MB	(4) 1M x 9	(4) 1M x 9	(4) 4M x 9	(4) 4M x 9
48MB	(4) 4M x 9	(4) 4M x 9	(4) 4M x 9	NONE
49MB	(4) 256K x 9	(4) 4M x 9	(4) 4M x 9	(4) 4M x 9
52MB	(4) 1M x 9	(4) 4M x 9	(4) 4M x 9	(4) 4M x 9
64MB	(4) 4M x 9	(4) 4M x 9	(4) 4M x 9	(4) 4M x 9

CACHE CONFIGURATION	
Size	Bank 0
64KB	(8) 8K x 8
256KB	(8) 32K x 8

CACHE CONFIGURATION		
Size	JP12	JP14
64KB	pins 1 & 2 closed	Open
256KB	pins 2 & 3 closed	Closed