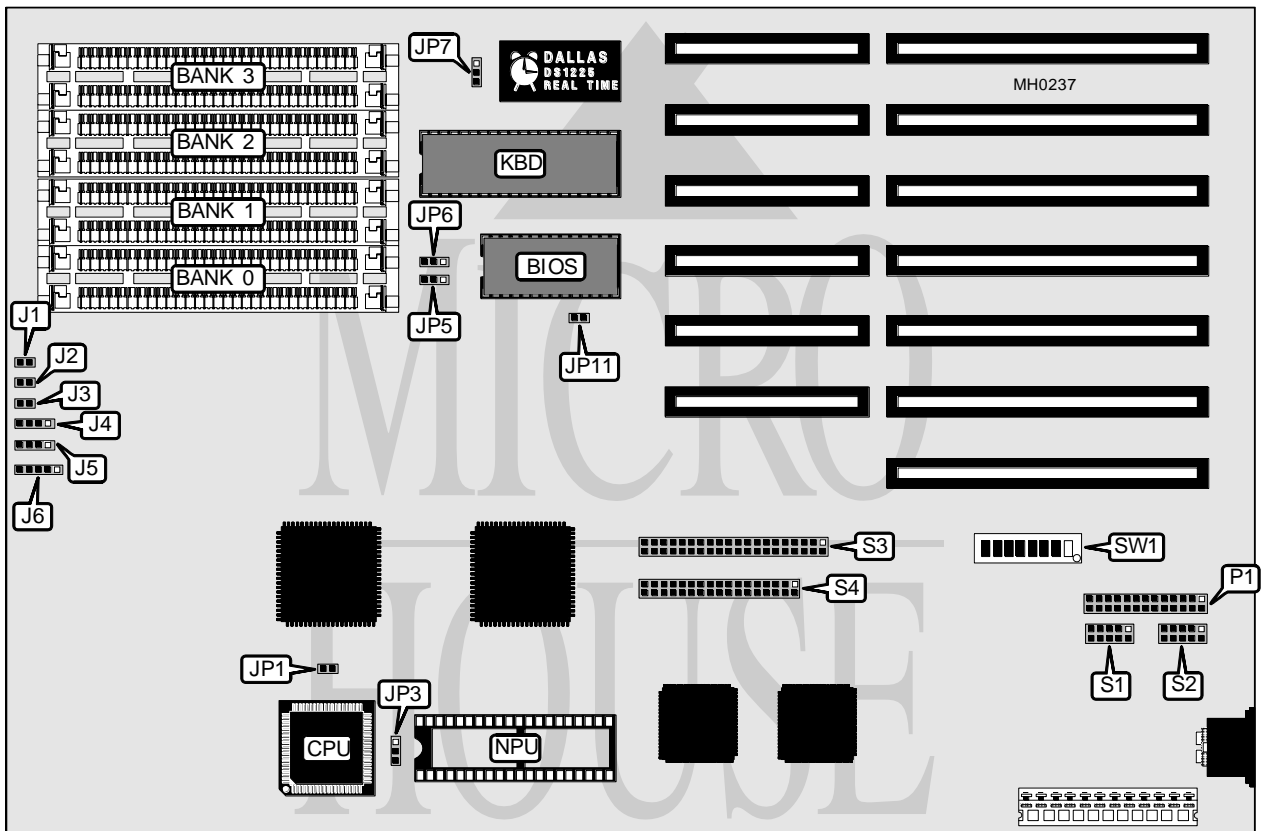


# GCH SYSTEMS, INC.

## EASY DATA 286

<b>Processor</b>	80286
<b>Processor Speed</b>	16MHz
<b>Chip Set</b>	Suntac
<b>Max. Onboard DRAM</b>	8MB
<b>Cache</b>	None
<b>BIOS</b>	Award/Phoenix
<b>Dimensions</b>	330mm x 218mm
<b>I/O Options</b>	Parallel port, serial ports (2), floppy interface, IDE interface
<b>NPU Options</b>	80287



CONNECTIONS			
Purpose	Location	Purpose	Location
Reset switch	J1	Parallel port	P1
Turbo LED	J2	Serial port 1	S1
Turbo switch	J3	Serial port 2	S2
Hard drive LED	J4	IDE interface	S3
Speaker	J5	Floppy interface	S4
Power LED & keylock	J6		

Continued on next page . . .

# GCH SYSTEMS, INC.

## EASY DATA 286

... continued from previous page

USER CONFIGURABLE SETTINGS		
Function	Jumper/Switch	Position
í Factory configured - do not alter	JP1	Closed
í NPU mode select synchronous with CPU	JP3	pins 2 & 3 closed
NPU mode select asynchronous with CPU	JP3	pins 1 & 2 closed
í BIOS type select Award	JP7	pins 2 & 3 closed
BIOS type select Phoenix	JP7	pins 1 & 2 closed
í Factory configured - do not alter	JP11	Open
í Monitor type select color	SW1/1	On
Monitor type select monochrome	SW1/1	Off
í Floppy drive enabled	SW1/2	On
Floppy drive disabled	SW1/2	Off
í Floppy drive address select primary	SW1/3	Off
Floppy drive address select secondary	SW1/3	On
í COM1 (S1) enabled	SW1/6	On
COM1 (S1) disabled	SW1/6	Off
í COM2 (S2) enabled	SW1/7	On
COM2 (S2) disabled	SW1/7	Off
í LPT1 (P1) enabled	SW1/8	On
LPT1 (P1) disabled	SW1/8	Off

DRAM CONFIGURATION				
Size	Bank 0	Bank 1	Bank 2	Bank 3
512KB	(2) 256K x 9	NONE	NONE	NONE
1MB	(2) 256K x 9	(2) 256K x 9	NONE	NONE
2MB	(2) 256K x 9	(2) 256K x 9	(2) 256K x 9	(2) 256K x 9
2MB	(2) 1M x 9	NONE	NONE	NONE
3MB	(2) 256K x 9	(2) 256K x 9	(2) 1M x 9	NONE
4MB	(2) 1M x 9	(2) 1M x 9	NONE	NONE
5MB	(2) 256K x 9	(2) 256K x 9	(2) 1M x 9	(2) 1M x 9
8MB	(2) 1M x 9	(2) 1M x 9	(2) 1M x 9	(2) 1M x 9

ON BOARD IDE CONFIGURATION		
Setting	SW1/4	SW1/5
Enabled	Off	On
Disabled	On	Off

BIOS CONFIGURATION		
Size	JP5	JP6
27256	pins 1 & 2 closed	pins 1 & 2 closed
27512	pins 2 & 3 closed	pins 2 & 3 closed